



FOR IMMEDIATE RELEASE

Contact Information:

Barbara Bishop, Marketing & Communications Director

BBishop@greenwichhistory.org

203-869-6899, Ext. 12

Inheriting the Impressionist Tradition: Community Artists Exhibition at Greenwich Historical Society

Cos Cob, CT, May 16, 2013—The Greenwich Historical Society will celebrate the work of local artists Maria C. Friscia, Perry Robinson, MD and Margaret Esmé Simon in a Community Artists exhibition entitled *Inheriting the Impressionist Tradition*. With still life paintings and landscapes rendered in colorful painterly strokes, the work represents a modern reflection on the American Impressionism that evolved at the Cos Cob art colony early in the last century. Notes show organizer Carol Dixon, “The artists have put together a show that is in sync with both the season and the artistic legacy of Bush-Holley Historic Site.” The exhibition will run from June 5 through July 31, 2013, with an opening reception on June 5, from 6:00 to 8:00 pm.

Riverside resident and artist Maria C. Friscia was born in Sicily and immigrated to the United States at the age of 12. She graduated with a Master of Fine Arts from Lehman College in New York. She is a member of the Stamford Art Association, the Greenwich Art Association, the Greenwich Arts Council and the Art Society of Old Greenwich.

Dr. Perry Robinson studied art and design in New York and attended the Art Center College of Design in Pasadena. His career took a turn when he decided to attend medical school at Columbia University, completing a surgical internship and landing in the business/medical world and Wall Street. Now a biomedical consultant, this is Dr. Robinson’s first show.

Architect Margaret Esmé Simon, who has painted all her life, attended New York City’s High School of Music and Art (now La Guardia High School) as an art major. Graduating with a BA in English from Cornell University, she went on to receive a MArch from Columbia University. In 2008, she decided to dedicate herself to the study and pursuit of art full time.

The Community Artists series was established to support and encourage contemporary local artists by offering a welcoming venue for the exhibition of their work in a unique and historic setting. All works on display will be available for purchase with a portion of the proceeds going to the Greenwich Historical Society. The show is on view at the Storehouse Gallery Museum Shop Wednesday through Sunday, from noon to 4:00 pm and admission is free. To read the artists’ statements, visit www.greenwichhistory.org. To attend the opening reception, please call 203-869-6899, Ext. 10.

Inheriting the Impressionist Tradition

June 5 through July 31, 2013

Greenwich Historical Society Storehouse Gallery Museum Shop
39 Strickland Road, Cos Cob, CT 06807

Free Admission

Open Wednesday through Sunday, noon to 4:00 pm

Opening reception June 5, 2013, 6:00-8:00 pm

RSVP 203-869-6899, Ext. 10

www.greenwichhistory.org



Image: Margaret Esmé Simon, *Five Pears*, Oil on Canvas Board

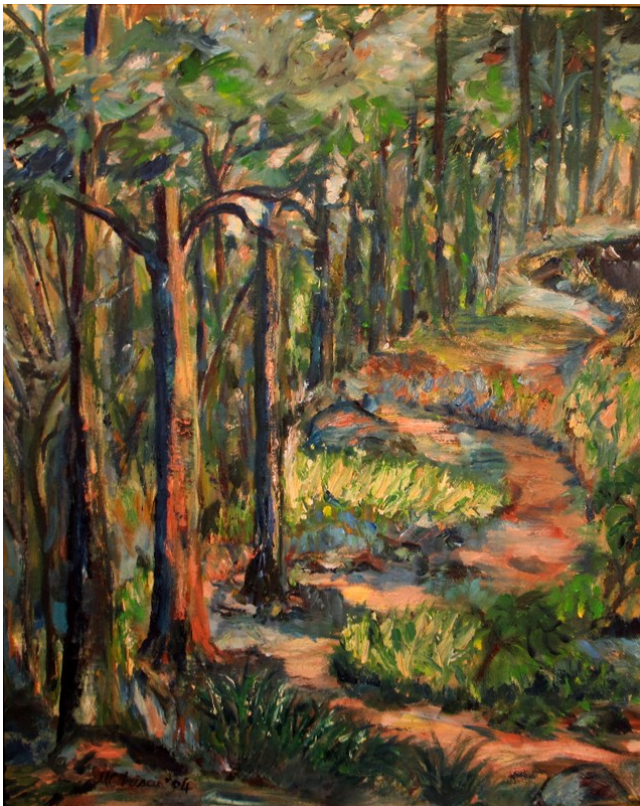


Image: Maria C. Friscia, *Naturewalk*, Oil on Canvas



Image: Perry Robinson, *Summer Jardiniere*, Oil on Canvas