

Greenwich Historical Society

Explore our colorful past



news+programs

november | december 2014

GREENWICH HISTORICAL SOCIETY

is dedicated to promoting Greenwich's unique and colorful past. Our Archives actively chronicle the life of our town for future generations, our programs and exhibitions help people of all ages better understand their connection to history, and our preservation efforts safeguard an architectural heritage that includes the National Historic Landmark Bush-Holley House, the site of the Cos Cob art colony.

BUSH-HOLLEY HISTORIC SITE

is a member of the Connecticut Art Trail, a partnership of 17 world-class museums and historic sites across the state. Discover collections rich in history and heritage, including European masterpieces, American Impressionism, ancient art and contemporary culture.

HOURS

Storehouse Gallery

Open Wednesday through Sunday,
12–4 pm

Docent-led tours of Bush-Holley House 1, 2 and 3 pm

Closed Monday and Tuesday

Library and Archives

Wednesdays, 10 am–12:30 pm
and 1 pm–4 pm, or by appointment

ADMISSION

\$10 for adults

\$8 for seniors and students

Admission always free to members.

Free to the public the first Wednesday of every month.

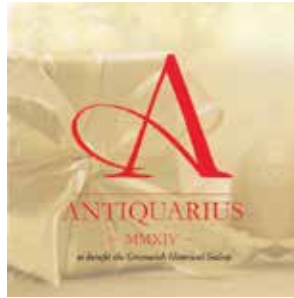
CONTACT US

Greenwich Historical Society
39 Strickland Road
Cos Cob, CT 06807
203-869-6899

www.greenwichhistory.org

DIRECTIONS

Off I-95 at exit 4. Visit
www.greenwichhistory.org
for details.



ANTIQUARIUS: THE HOLIDAYS IN HIGH STYLE

Antiquarius is quite simply our most important fundraising event of the year, and when you support Antiquarius, you make a lot of good things happen. You enable the Historical Society to collect and chronicle the vibrant history of this unique community so that we can share it with current and future residents, scholars and students. You help to sustain the Library and Archives to tell the Greenwich story through photos and primary source documents.

You become a steward of beloved Bush-Holley Historic Site, help launch fascinating art and history exhibitions, further preservation initiatives and allow us to offer education programs for all ages.

When you participate, it's a win/win. You contribute immeasurably to the cultural vitality of Greenwich and have a really good time doing it. What could be better?

We urge you to attend all these exciting events, to celebrate the holidays in high style and to uphold a great Greenwich tradition. Many thanks!

ANTIQUARIUS SCHEDULE OF EVENTS

Visit www.greenwichhistory.org/antiquarius or call
203-869-6899, Ext. 14, for tickets or more information.



Gala Preview Party of the Greenwich Antiques Show: Sugarplums and Snowflakes, A Nutcracker Holiday Gala

Browse the Greenwich Winter Antiques Show before it opens to the public. Meet over 40 nationally recognized antiques, art and jewelry exhibitors featuring their holiday best.

Preview Party catering by *Marcia Selden Catering*

Friday, December 5, 6:30 to 9:00 pm

Eastern Greenwich Civic Center

Advance reservations required.



The Greenwich Winter Antiques Show

Presented by Frank Gaglio, Inc.

Saturday, December 6, 10:00 am to 6:00 pm

Sunday, December 7, 11:00 am to 5:00 pm

Eastern Greenwich Civic Center

Admission is \$15 per person, payable at the door.



The Holiday Boutique

Something for everyone on your holiday gift list! Tuesday evening features complimentary wine and passed hors d'oeuvres.

Tuesday, December 9, 6:00 to 8:30 pm

Wednesday, December 10, 9:00 am to 6:00 pm

Christ Church Greenwich

Free admission



Holiday House Tour

The 2014 House Tour will showcase five spectacular Greenwich homes.

Wednesday, December 10, 10:00 am to 4:00 pm

Advance reservations required.

Holiday House Tour Luncheon

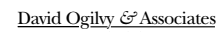
Enjoy a country club buffet lunch with friends as part of your day on the House Tour.

Wednesday, December 10, 11:30 am to 1:30 pm

The Milbrook Club

Advance reservations required.

We are extremely grateful for the support of the following Antiquarius sponsors:



All images from the Collection of the Greenwich Historical Society

Decorating The Way I See It: Lecture and Luncheon with Markham Roberts to Benefit the Historical Society

Join us as renowned interior designer Markham Roberts shares professional insights key to creating the perfect home. The program will include remarks, a video presentation and a lively Q&A session where you'll discover sources of inspiration, share design queries and get coveted personal advice.

Markham Roberts is known for his ability to work in any vernacular, bringing a fresh approach to classical design. His work has been described as "the very definition of chic," and is frequently published in prominent design publications. Roberts trained with renowned decorator Mark Hampton before opening his own firm in 1997. He has earned a reputation as one of the top decorators of his generation and was named to the AD100.

Each guest will receive a complimentary copy of Markham's book, *Decorating: The Way I See It*. Guests will also be able to purchase Markham Roberts-designed tablecloth overlays and centerpieces inspired by his look and have the opportunity to enter to win a fabulous door prize.



The Belle Haven Club
100 Harbor Drive, Greenwich
Thursday, November 13, 2014
Arrival and Seating: 11:00 am
Lecture and Luncheon: 11:30 am sharp
Question & Answer and book signing to follow
Tickets: \$250 / \$500 / \$1,000
Seating is limited. Advance reservations required.

ANTIQUARIUS 2014 LEADERSHIP

- | | |
|---|--|
| Deborah and Chuck Royce
<i>Honorary Chairs</i> | Jacki Brew Kathryn Stewart
<i>Co-Chairs, Silent Auction</i> |
| Tiffany Burnette Samantha Moro
Catherine Tompkins
<i>Co-Chairs, Designer Luncheon</i> | Rachel Kelley Serena Perlman
<i>Co-Chairs, Holiday House Tour Logistics</i> |
| Lynne Wheat Suzanne Frank
<i>Co-Chairs, Patrons</i> | Catherine Tompkins
Elizabeth Lake
<i>Co-Chairs, Holiday House Tour Hospitality</i> |
| Sandra Morgan
Laird Morgan Tolan
<i>Co-Chairs, Holiday House Tour</i> | Ashley Allan
<i>Chair, Holiday House Tour Luncheon</i> |
| Holly Cassin Catie Salyer
<i>Co-Chairs, Holiday Boutique</i> | Frank Gaglio
<i>Producer,</i>
<i>Greenwich Winter Antiques Show</i> |
| Lisa McAtee Beth Taylor
Carrie Wallack
<i>Co-Chairs, Gala Preview Party</i> | Markham Roberts
<i>Honorary Chair, Designer Forum</i> |
| | Davidde Strackbein
<i>Chairman, Board of Trustees</i> |

Bush-Holley House by Candlelight

A long-standing holiday tradition, Bush-Holley House will feature costumed interpreters, period holiday decorations and "candle" lighting throughout.

Tours will begin at the Vanderbilt Education Center and take roughly 45 minutes. This year, in keeping with our WWI exhibition theme, they will focus on how the Holley family celebrated the holidays during the war years, including the meals they might have prepared. Visitors may also enjoy hot chocolate and seasonal treats, music, crafts and, from 5:00 to 6:00, a visit from Santa Claus.

Sunday, December 14, 2014; 5:00 to 7:00 pm

Vanderbilt Education Center

This event is free to all. Reservations not required.



Treasure Hunt Holiday Performances by No Strings Marionette Company

All aboard for a swashbuckling treasure hunt! When young Jim is lured out to sea in search of adventure, a wild storm throws him overboard, and an unexpected underwater odyssey begins. With an enchanted kiss from a young mermaid, Jewel, Jim is able to breathe under water.



Together they meet a host of amazing sea creatures, but also discover that King Neptune's domain is threatened by pollution. See how Jim and his companions encourage everyone to take better care of the sea so that all the creatures above and below can live in harmony.

This family program includes a 30-minute marionette show followed by a Q&A session where everyone has an opportunity to touch and ask questions about the marionettes. There will be a craft program in the Vanderbilt Education Center where children can create their own "underwater creatures."

No Strings Marionette Company is a two-puppeteer touring marionette theater, concentrating on performance pieces for family audiences. Each production is created in-house. They perform primarily in New England, New York and New Jersey, and also teach their craft to a wide range of people through puppet-making workshops and residencies.

Saturday, December 20, 2014; One-hour programs at 1:00 and 3:00 pm

Vanderbilt Education Center

Members: \$10; nonmembers: \$15.

Space is limited. Advance purchase is strongly advised.

The William C. Crooks Distinguished Lecture:

Lasting Post: Love, Law and Laureates: The Forgotten Legacies of WWI

James E. Baker, Chief Justice of U.S. Court of Appeals for the Armed Forces

Judge James E. Baker will explore legacies of the First World War including the war's influence on letters, law, remembrance and the concept of service. Judge Baker currently serves on the U.S. Court of Appeals for the Armed Forces, which is an appellate body composed of five civilian judges that handles cases arising under the Uniform Code of Military Justice.

Judge Baker attended Yale University, served in the Marine Corps as an infantry officer and graduated from Yale Law School in 1990. He was a legislative aide to Senator Daniel Patrick Moynihan and went on to serve in a variety of important civil service capacities including appointments to the U.S. Department of State, the National

Security Council, the Council to the President's Foreign Intelligence Advisory and Intelligence Oversight Boards, and as Special Assistant to the President and Legal Advisor to the National Security Council. He is the author of *In the Common Defense: National Security Law for Perilous Times* (a text widely used in the study of the subject) and, with Michael Reisman, *Regulating Covert Action*. Judge Baker is the recipient of the 1999 Colonel Nelson Drew Memorial Award (the NSC's highest honor) and the Director of Central Intelligence's Director's Award. He is also the great-grandson of John Henry Twachtman and a grand-nephew of WWI veteran J. Alden Twachtman, both members of the Cos Cob art colony.



Wednesday, November 5, 2014; 7:00 – 8:00 pm

Greenwich Library, Cole Auditorium, 101 West Putnam Avenue, Greenwich, CT 06830

Admission is free, but reservations are strongly suggested. Call 203-869-6899, Ext. 10.

Lecture by Elaine Uzan Leary: American Women Rebuilding France

This presentation by Elaine Uzan Leary, based on a travelling exhibition, "American Women Rebuilding France 1917-1924," focuses on the amazing response to the devastation caused by WWI in France led

Picardy after WWI. Over 350 American women responded to Morgan's appeal and came to the aid of the French people. Leary will share original photographs of the era from the Anne Morgan archives of the Franco-American Museum, Chateau de Blérancourt in Picardy, France.

Leary is a graduate of Stetson University, Université de Strasbourg, France; Middlebury College Graduate School; the Chambre de Commerce in Paris; and Emerson College Graduate Studies in Boston. She is currently Executive Director of the American Friends of Blérancourt, which supports the Franco-American Museum, Chateau de Blérancourt in Picardy, France.

This program is co-sponsored by Alliance Française

Tuesday, November 18, 2014

1:00 to 2:00 pm, followed by short Q&A session

Vanderbilt Education Center

Members: \$10; nonmembers: \$15.



by Anne Morgan, youngest daughter of financier J.P. Morgan. CARD (Comité Américain pour les Régions Dévastées) was created by Morgan to aid the civilian population and helped rebuild war-torn

Support the Greenwich Historical Society "Automatically"

The holidays are almost upon us, and chances are you'll be ordering gifts online. Are you an Amazon shopper? If so, next time you shop, please sign up for the Amazon Smile program. Just choose the Historical Society as your designated recipient, and Amazon will donate 0.5% of the price of your purchase each time you shop. What could be easier? For more information visit <https://org.amazon.com>.



Our thanks to La Bella's Fine Wine & Spirits for providing delightful wines for the opening reception of *Greenwich Faces the Great War*.



Visit us on Facebook to see changing Greenwich History articles and event announcements.

Save the Dates:

October 1, 2014 through March 22, 2015

Greenwich Faces the Great War Exhibition

November 5

2014 William C. Crooks Distinguished
Lecture: James E. Baker, Chief Justice of U.S.
Court of Appeals for the Armed Forces

November 13

Decorating the Way I See It: Lecture and
Luncheon with Markham Roberts

November 18

American Women Rebuilding France:
Lecture by Elaine Uzan Leary

December 5

Antiquarius Preview Party

December 6 & 7

Greenwich Winter Antiques Show

December 9 & 10

Holiday Boutique

December 10

Holiday House Tour and Luncheon

December 14

Bush-Holley House by Candlelight

December 20

Treasure Hunt Marionette Performance

news

A Gift to the Archives from the Reba & Dave Williams Foundation

The Greenwich Historical Society recently received a grant to support an acquisition fund for books, archival material and other collection items from the Reba & Dave Williams Foundation for Literature and the Arts. The grant will allow us to acquire important new items for research and exhibition purposes.

When we asked the Williamses why they were motivated to make this particular gift, Reba graciously replied as follows:

“ [As a new board member,] I was recently part of a group that visited the storage area for books, papers and paintings. I asked if there was an acquisitions fund allowing for a quick purchase if something came up at auction. When I heard there wasn't, I decided to start one.

I've worked as a librarian where such a fund was necessary to buy a treasure before it was sold to someone else. Also, as a collector, I've known occasions when cash was required to buy an object coveted by others. ”

We are now indeed poised to expand our collection when items meaningful to Greenwich history become available. Our sincere thanks to the Williams Foundation for their very generous gift.

Reba and Dave Williams



The second in a series of essays featured in conjunction with Greenwich Faces the Great War

Greenwich Women Face the Great War

By Kathleen Eagen Johnson

The experiences of individual women and girls in Greenwich illustrate the political ramifications of both extraordinary and commonplace activities during World War I. Many women took on jobs traditionally



Grace Gallatin Seton, Paris, France, 1919. Collection of the Greenwich Historical Society

filled by men, running their husbands' businesses and working as military drivers/auto mechanics, farmers and waiters. Jutta J. Anderson, Florence L. Dixon and seven other women from Greenwich served as nurses in the U.S. Army.

Grace Gallatin Seton numbered among the Greenwich women who received accolades for their wartime service and recognized how such work supported the suffragette cause. Seton, whose husband was the famous nature writer Ernest Thompson Seton, founded Le Bien-Être du Blessé (Welfare of the Injured) Women's Motor Unit in 1916. This all-female transport service moved people and goods in the war zone. She was a leader of the Connecticut Woman Suffrage Association during the 1910s.

Others in Greenwich's suffrage movement turned their attention to maximizing

agricultural and food production. Rosemary Hall headmistress Caroline Ruutz-Rees, who led the Connecticut Division of the Woman's Committee of the Council of National Defense, and philanthropist, feminist and renowned art collector Louisine Havemeyer publicly championed the Woman's Land Army of America. The WLA was modeled on the British Women's Land Army. In both programs, women took the place of men who left farm fields to fight on battlefields. Havemeyer founded the Greenwich Canning Kitchen, a model program for preserving home-garden bounty. Havemeyer had co-founded the National Women's Party with Alice Paul in 1913. She provided financial support to—and spoke, marched and demonstrated for—the cause of women's suffrage. Ruutz-Rees served on the executive board of the Connecticut Woman Suffrage Association, was active in the Greenwich Equal Franchise League and organized the National Junior Suffrage Corps. Her students cultivated potato fields and war gardens while also helping with landscape maintenance on the school's campus.

The Woman's Land Army was one of the many war-related initiatives that helped-



Lithograph poster, circa 1918, by Carter Housh (1887–1928).

break down gender barriers as women assumed the heavy farm labor typically reserved for men. With a training camp in nearby Bedford, New York, the WLA began

Women and girls working at the Greenwich Canning Kitchen, circa 1918. Collection of the Greenwich Historical Society.





Louise Van Dyke Brown, 1914. Collection of Louise Van Dyke Brown. Courtesy of the Greenwich Library Oral History Project.

working in farm fields in Greenwich, such as Sabine Farms. The Greenwich Canning Kitchen was established in 1917 as a way

Rosemary Hall students heading toward the potato fields, circa 1917. Courtesy of Choate Rosemary Hall Archives.



DOING THEIR USEFUL AND SENSIBLE BIT—Instead of organizing themselves as khaki clad, rifle bearing regiments to face batteries of cameras, the girls of Rosemary school of Greenwich, Conn., are daily working to increase the output of the lowly spud. Each girl has a portion of ground sufficient for twenty-five hills, which she will cultivate as long as the potato producing season lasts.

to contribute to food coffers. The goal was to preserve the produce of war gardens and small farms that might otherwise go to waste. Residents brought in produce to be processed for their own use or for consumption by troops or civilians in need. This program operated out of a storefront on Railroad Avenue.

As was true of women across the nation, Greenwich women and girls immersed themselves in American Red Cross activities. Louise Van Dyke Brown, Alexandra Spann and others recalled (as part of the Greenwich Library Oral History Project) gathering at the Greenwich YMCA and other locations to fashion surgical dressings and to knit socks, mufflers, helmet liners and other items for soldiers. Annie Louise Brush wrote of this work in her diaries, which were recently added to the collection of the Greenwich



Women's Motor Unit at the donations warehouse for the Bien-Être du Blessé ("welfare of the wounded"), 1918-1919. Grace Gallatin Seton, second from left. Collection of the Greenwich Historical Society, gift of Karin Crooks.

Historical Society. On April 21, 1918, she recorded that the death of Colonel Raynal Bolling from Greenwich had been verified and that "Mrs. Bolling is from all I hear a herione [sic], when she knew that her husband was missing she controlled herself and had the people come to her house as usual for dressings and worked with them."

Both far from and near to home, Greenwich women supported the war effort in meaningful ways. They served as nurses, drivers, farmers and Red Cross workers, assuming jobs generally reserved for males in response to a labor shortage. While anti-suffragettes and suffragettes alike took part in food and fuel conservation, fundraising for relief charities and other activities, there was a definite spirit in the air that women had shown their mettle and were deserving of the vote. This was particularly strong in Greenwich, the home of some of the movement's most high-profile leaders. Women's passionate service during the war inspired the previously reluctant President Wilson to finally agree to women's suffrage. As he recognized in a speech to Congress in 1918, "We have made partners of the women in this war; shall we admit them only to a partnership of suffering and sacrifice and toil and not to a partnership of privilege and right?"

The expanded version of this article will be published in the Winter 2014/15 issue of Connecticut Explored magazine and on the Historical Society's website. Kathleen Eagen Johnson is the guest curator of Greenwich Faces the Great War. She is a freelance museum consultant and writer at HistoryConsulting.com.