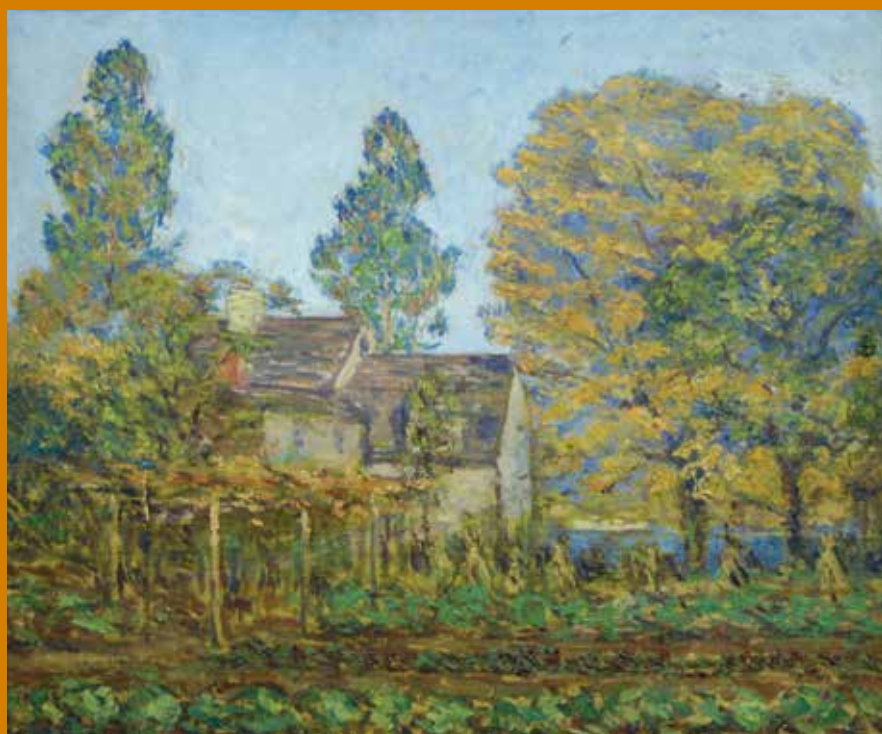


Greenwich
Historical
Society

Explore our colorful past

2016-17

ANNUAL REPORT



Board of Trustees

Officers

Davidde E. Strackbein
Chairman

David O. Brownwood
Vice Chairman

Jessica S. Guff
Vice Chairman

Catherine Tompkins
Vice Chairman

Bruce D. Dixon
Treasurer

Isabel Malkin
Corresponding Secretary

Alease Fisher Tallman
Beth Taylor
Catherine Tompkins
Hugh B. Vanderbilt, Jr.
Betsy Vitton
Carrie Wallack
Lynne Wheat

Honorary Trustees

Jan Calloway
Dorothy M. Hall
Susan G. Larkin
John W. Moffly, IV
Genevieve Reed
Gloria Van Norden
Jean Wallace

Professional Advisory Board

John Dixon
Susan G. Larkin
Meriwether Schmid

Trustees

Ashley Allan
Thomas P. Clephane
Bea Crumbine
Suzanne C. Frank
Robert H. Getz
Jessica S. Guff
Gray W. Hampton, III
Melissa Hawks
M.E. Kjaernested
Barbara MacDonald
Joseph J. Morrow
Anne Ogilvy
David G. Ormsby
Emma Pennington
Ellen T. Reid
Deborah G. Royce
Leigh Ann Ryan



Letter from the Chairman

Since its founding in 1931, the Greenwich Historical Society has been collecting, preserving and disseminating the history of the town for the benefit of both current and future generations. During this period, the Historical Society has significantly expanded its activities to address the challenges of documenting and preserving the cultural, demographic and architectural heritage of the Town of Greenwich, which was founded in 1640.

The accomplishments and statistics chronicled in this annual report reflect a watershed year in fulfilling our mission. We broke ground to launch a newly reimagined National Historic Landmark campus, which will enable the Historical Society to provide innovative exhibitions, creative preservation initiatives and rewarding educational programs to the Greenwich community, which we are dedicated to serve.

This expansion of our services required long hours, hard work, sustained commitment and widespread community support. We have been blessed with dedicated members, extraordinarily generous donors, a visionary Board of Trustees, a highly devoted professional staff and exceptional volunteers. We extend our heartfelt gratitude to each of you for your invaluable efforts and support.

Without you, the fulfillment of our mission to preserve and share our town's history would not be possible.

Davidde E. Strackbein
Chairman, Board of Trustees



Letter from the Executive Director

I have been honored to serve during a period of remarkable expansion for the Greenwich Historical Society. I cannot say enough about the dedication and generosity of the people who are making this possible, or about the many hours of planning and study by the board, staff and volunteers that have gone into thinking through the complex issues that we face to significantly increase our services to the community in our new facilities.

To remain relevant and responsive to the evolution of the town, preserving and sharing Greenwich's history is a continuing challenge. It's important, and it's our mission.

Thank you for your involvement this past year in the work and activities highlighted in the following pages. I look forward to your continued enthusiasm and support as we complete the restoration of Toby's Tavern to the art colony era, expand our parking and continue construction of the new building that will provide universal accessibility for returning and new audiences to enjoy our expanded collections, exhibitions and visitor amenities.

Debra L. Mecky, Ph.D.
Executive Director and CEO

COVER: Back views of Bush-Holley Historic Site

PANORAMA PHOTO: Christopher Shields, October 10, 2017

PHOTO: Elmer MacRae and Constant Holley MacRae with twin daughters Constant and Clarissa behind Bush-Holley House, circa 1910,

William E. Finch Jr. Archives, Holley/MacRae Family Papers

PAINTING: Elmer MacRae (1875–1953), *Back of the Old House*, 1910, oil on canvas, gift of Shirley Fogwell, 1996

GREENWICH HISTORICAL SOCIETY BY THE NUMBERS



2,156

visitors walked back in time through the digital collections portal,
digitalgreenwichhistory.org



4,169

children and families discovered that history and art can be fun and inspiring during family, school and camp programs



35,881

visitors explored the many facets of Greenwich history at our website,
greenwichhistory.org



163,062

enjoyed our posts on Facebook, and 28,211 shared our highlights and happenings via Twitter

A Home for Greenwich History

EXHIBITIONS

An Eye to the East: The Inspiration of Japan
(Oct. 12, 2016 – Feb. 26, 2017), curated by Karen Frederick



What a (literally) groundbreaking year it was as we explored the people and events that shaped Greenwich's rich and colorful past. Our calendar was chock-full of history and art programs featuring fascinating events and notable personalities. We presented two major exhibitions in the Storehouse Gallery and also hosted an artist's exhibit in the museum shop. For the seventh year in a row, we hosted the Hamilton Avenue Museum-School Partnership, where each student visits and learns about town history through hands-on experiences and subsequent classroom activities.

In addition to Antiquarius, three major fundraising events afforded guests the opportunity to meet authors, historians and design luminaries and to hear about their latest work—all happily in support of the Historical Society.

We welcomed children and families for Fall Festival and Candlelight and hosted over 3,300 children for tours and after-school programs at Bush-Holley Historic Site. "Sarah Bush" visited every public school third-grade class in town. Area teachers explored our site, taking advantage of a new program focused on the use of primary source materials as a means to illustrate the impact of historical events at the local level. We went "high tech" when our curators connected with Julian Curtiss School and the International School at Dundee through Skype session interviews to share information about their jobs.

Here are a few of the highlights of a very busy year!

Creative Work, Creative Play: Jane and Jim Henson (April 5 – Oct. 8, 2017),
curated by Karen Falk and Karen Frederick



- 1. Linda Huston, Lauren Miller
- 2. Eric Sciotto and son pose like Kermit the Frog
- 3. Cynthia Barrett, Karen Falk, Craig Shemin, Leslee Asch, Cheryl Henson
- 4. Catherine Ladnier performs at our popular Story Barn
- 5. Carol and John Dixon and Barbara Bishop

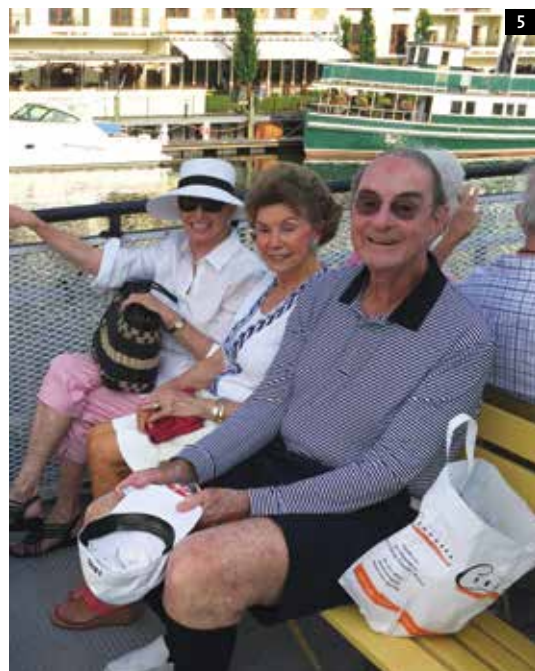


"In Their Footsteps: Deborah Pierce Bonnell Paints Weir Farm"
(Feb. 1–28, 2017)



- 1. Young performers from the Greenwich Japanese School at Fall Festival
- 2. Duo Yumeno performance





1. Annual Meeting speaker Estella Chung
2. The Comes Family consults with Santa at Candlelight
3. Lucinda MacKethan lectures on Anya Seton
4. Art, Architecture and Landscape series lecture on Tiffany Windows by Alice Frelinghuysen
5. Captain's Harbor History Cruise: Isabel Malkin, Natalie Pray, Peter Malkin
6. Plein Air Painting at 2017 Summer Camp

ART AND HISTORY PROGRAMS

SCHOOL PROGRAMS



“My son ... came to the after-school art class when he was in second grade.... How much he enjoyed it let us realize what talent he had.... He is in high school now and looks to a career in the arts.” —Barbara Calabria



1. Hamilton Avenue Magnet School junior docent gives a tour of Bush-Holley House
2. Sarah Bush, a.k.a. Lucy Van Atta, talks about her life during Colonial times during a third-grade class visit
3. Primary Source Workshop for teachers from Greenwich and Darien public schools
4. Hamilton Avenue Magnet School junior docents gather on the front porch of Bush-Holley House



2,740
people showed us they care
by supporting our fundraising events

FUNDRAISING EVENTS



1. Guest speaker, celebrated reporter and *60 Minutes* co-host Lesley Stahl
2. Guest speaker, author and historian Walter Isaacson
3. Designer Mark D. Sikes flanked by "A Night of Beauty" event co-chairs Catherine Tompkins and Lee Ann Thornton
4. Summer Soiree at French Farm



History Lives Here Preservation and Outreach

Promoting preservation continues to be a crucial aspect of our mission as the town continues to lose more historic homes to the wrecking ball. Our Landmark Recognition Program has now documented 305 properties and continues to provide valuable information for architects, researchers, real estate professionals and homeowners alike. We celebrated its 30th anniversary by citing four properties, including, for the first time, a mid-century modern home. In honor of the occasion, First Selectman Peter Tesei declared May to be Preservation Month. Utilizing our ever-expanding social network, we held a "This Place Matters" photo contest, where folks of all ages posted images of sites that represented the beauty and unique nature of Greenwich.

In a further effort to make citizens more aware of the history that surrounds them, the Greenwich Preservation Network erected historic district markers in the Fourth Ward, Glenville (next to the firehouse) and Putnam Hill Historic Districts. We are extremely grateful to those who donated their time, talent and materials to the design and construction of these markers and to the Town of Greenwich for its support.

We got out and about, partnering with the Greenwich Point Conservancy on a lecture about Bertha Potter Boeing (Innis Arden Cottage's first resident) and with the Greenwich Council Boy Scouts of America on a lecture by Julie Seton on her famous grandfather Ernest Thompson Seton. We also participated in Greenwich's annual Celebrate the Sound event with a well-attended History on Wheels bike tour around the Point.



1. State Representative Livvy Floren, Governor Dannel Malloy and Debra Mecky on the occasion of our grant award for expanded parking
2. Landmarks Event Chair Emma Pennington and Landmarks Recognition Program Chair Robin Kencel
3. History on Wheels tour of Greenwich Point
4. Celebrating the new Glenville Historic District Marker

"I want to know about the place where I'm raising my children." — Leigh Ann Ryan



Antiquarius 2016

Antiquarius is our most important annual fundraiser and represents the efforts of over 200 dedicated volunteers who work tirelessly to produce Opening Night, the Holiday Boutique and the House Tour. We are grateful for the style, creativity and enthusiasm that our volunteers bring to Antiquarius, and we are deeply grateful to our generous patrons and to the six homeowners who so generously opened the doors to their festively decorated homes.



1. (left to right) Debra Mecky, Ashley Allan, Alessandra Branca, Deborah Schmidt Robinson, Ashley Bruynes, Camilla Love McGraw at the 2016 Greenwich Winter Antiques Show Opening Night

2. Donna Moffly and Susan Sletteland shop at the Holiday Boutique

3. Honorary Design Chair Alessandra Branca displays her latest book before her inspirational lecture



Antiquarius Leadership

Alessandra Branca
Honorary Design Chair

Barbara H. MacDonald
Anne Ogilvy
Alease Fisher Tallman
Board Liaisons

Melissa Hawks
Designer Forum

Holly Cassin
Elizabeth Merck Lake
Leigh Ann Ryan
Co-Chairs, Events

Samantha Noelle Mollett
Amanda Todd-Lynch
Holiday Boutique Co-Chairs

Casey Carey
Victoria Frank
Holiday House Tour Hospitality Co-Chairs

Courtney Bieger
Catherine Tompkins
Holiday House Tour Co-Chairs

Suzanne Eason Hopson
Rachel Suzanne Kelley
Holiday House Tour Logistics Co-Chairs

Meg Nolan van Reesema
Journal Chair

Alicia Laing
Media Chair

Caroline Emery
Zoe Khayatt
Patrons Co-Chairs

Ashley Allan
Ashley Bruynes
Camilla Love McGraw
Deborah Schmidt Robinson
Patron & Preview Party Design Co-Chairs

Jacki Brew
Kathryn Stewart
Raffle Co-Chairs

Frank Gaglio
Producer, Greenwich Winter Antiques Show

Davidde E. Strackbein
Chairman, Board of Trustees

Corporate Sponsors

A.P. Construction Company
The Ashforth Company
Betteridge
David Ogilvy and Associates
Douglas VanderHorn Architects
DOYLE
Greenwich Magazine
NEBCO Insurance Services, LLC



At the 2016 Opening Night...

1. Susan Hinrichs and Susan Lynch

2. Roxanne and Hugh Vanderbilt

3. Ellen and John Reid and Thom Healy



Antiquarius Patrons

July 1, 2016— June 30, 2017

Antiquarians

Betteridge
Mr. and Mrs. Ronald G. Strackbein

Connoisseurs

A.P. Construction Company
The Ashforth Company
Isabel and Peter Malkin
NEBCO Insurance Services, Inc.
Anne and David Ogilvy
Maria and Douglas VanderHorn

Sponsors

Suzanne and Ramsey Frank
Jeanine and Robert H. Getz
Debbie and Chuck Hilton
M.E. and Gudmundur Kjaernested
Michael A. Kovner and Jean Doyen de Montaillou
Barbara MacDonald
Claire and Joe Morrow
Russ and Debbie Reynolds
Deborah and Chuck Royce

Angels

Marvin Davidson
Marree and John Townsend
Sue Ann Weinberg

Benefactors

Ashley and Mark Allan
Alisa and Curtis Brockleman
Susan and David Brownwood
Holly and Matt Cassin
Leason and Chris Cercy
Patricia and John Chadwick
Lyn and Lang Cook
Elysia and Jonathan Doyle
David Ford
Ellen and Michael Funck
Heather and Andrew Georges
Lauren and Gray W. Hampton, III
Briana and Gregory Hart
Kimberly and Christopher Johnson
Zoe and Shaker Khayatt
Elizabeth and Doug Lake
Susan Lynch
Anne and Chuck Niemeth
Emma and Mark Pennington
Irene and Mario Ponce
Mary Jo and Bill Riddle
Kate and Ray Rudy
Leigh Ann and Robert Ryan
Ellen Schapps and
Richard Paul Richman

Alease and Paul Tallman
Catherine and Dave Tompkins
Muffin and Chuck Zoubek

Patrons

Margaret Bragg
Jacki and Brendan Brew
Ashley and Jan-Paul Bruynes
Saira Burgess
Lucy and Abe Cary
Connie and Tom Clephane
Carol and George Crapple
Lucy and Nat Day
Colleen and Kipp DeVeer
Helen and Bruce Dixon
Carrie and Chip Emery
Jeannette Gugelmann
Susan Hinrichs
Samantha Knapp
Susan and Jim Larkin
Sally and Larry Lawrence
Leora and Steve Levy
Evelyn Lorentzen-Bell
Camilla and Whit McGraw
Debra and Carl Mecky
Samantha and Ryan Mollett
Mimi and John Henry Moulton
Deanna and Steve Mulligan
Lindsay and Dave Ormsby
Natalie Pray
Sabrina and Walter Raquet
Ellen and John Reid
Deborah Schmidt Robinson
and Perry Robinson
Lisa Tannebaum and Don Brownstein
Roxanne and Hugh B. Vanderbilt Jr.
Carrie and Russell Wallack
Lynne Wheat

Designer Forum

Alisberg Parker Architects
Cornerstone Contracting
Rinfret Ltd.
Roughan Interior Design
The Well Appointed House



At the 2016 Opening Night...

- 1. Colleen deVeer, Alexandra Codrara, Carrie and Chip Emery, Holly Cassin, Jacki Brew and Judy Collins
- 2. Samantha and Ryan Mollett, Ashley Reid
- 3. David Scott Parker, Bea Crumbine, Terry Betteridge



Greenwich Treasures Gifts to the Archives and the Museum Collection

July 1, 2016 – June 30, 2017

To preserve our past for future generations, the Greenwich Historical Society Archives depends on the assistance of people interested in preserving the unique culture of Greenwich. We acquire, preserve and make available to the public publications and original documents about important aspects of the history of the Town of Greenwich from its founding to the present. These can include original letters, diaries, scrapbooks, minutes, reports and publications such as books, magazines, menus, brochures, flyers and campaign literature.

The Museum Collection is comprised of objects that document the material culture of present and former inhabitants of Greenwich and its region. Particular emphasis is given to items connected to the history of Bush-Holley Historic Site or those useful to its interpretation. Objects include, but are not limited to, items associated with Greenwich people, places or events; fine and decorative arts; and maritime, agricultural, industrial and domestic artifacts that reflect the activities of the Bush family during the New Nation and of members of the Cos Cob art colony.

On behalf of current and future students, researchers and scholars, we would like to express our sincere appreciation to all who have contributed to these collections.

GIFTS TO THE ARCHIVES

Gerrit Argento

Deposit of folders containing papers read at the Mystery Club meetings, 2015-2016.

Matt Bernard

Photo snapshots of Greenwich downtown storefronts, 1990-2005.

Anne Bradner

Booklet: “Celebrating Our First 100 years, 1910-2010, Boys & Girls Club of Greenwich.”

Albert Brecken

Cos Cob Power Plant: Plan & Section Views, Site Plans, 1914 (facsimile), 1923-1926.

Molly Cummings Minot Cook

“A Journey to Western Tibet: The Journal of Wilbur L. Cummings, Jr.” Edited by David M. Ellerton with a foreward by José Ignacio Cabezón. Footnotes by Paul G. Hackett of Columbia University.

Susie Davis

Life Magazine from June 17, 1946. with photo essay on renovation of Tod mansion, Greenwich Point, for veterans’ housing.



Painting of Untitled Woodland Scene by Carolyn Campbell Mase, Gift of Dr. Christine I. Oaklander in honor of Susan Richardson

Martha Deegan

Folder of Mystery Club papers, 2014-2015.

Ruth Wescott Duncan

Isaac Ferris correspondence, bills, wills, land transactions, etc. Other miscellaneous documents related to Ferris family. Historical Society letters and ephemera. Items related to “Christmas in Greenwich,” a play put on by Dundee School, December 1963. Approximately 300 Greenwich postcards.

Pam Ferraro

Program titled “Graduation Exercises Grammar Schools, Greenwich, Connecticut, High School Field, Thursday, June 19th, Class of 1941.”

Carolyn Grady

33 Kodachrome slides of Greenwich locations taken by the donor in May 1978 as part of merit badge for Girl Scouts.

Melissa Hill

Two small photographs of bagpipers in parade on Greenwich Avenue (passing 156 Greenwich Avenue); two small photographs of East Putnam Avenue looking toward Mason Street (and Finch’s Pharmacy at corner); one postcard of Island Beach ferry; one photograph of Hamilton & Lavalette, 321 Greenwich Avenue. All photos (except postcard) appear to be from 1920s or 1930s.

Estate of Gertrude Murrell duPont Howland

Framed photograph (17" x 19" framed, photograph alone approx. 11" x 14") of Mr. John T. Howland, MFH Fairfield-Westchester Hunt and Hi-Jinx hunting with the Warrenton Hunt in Virginia. Photograph by Marshall Hawkins, Warrenton, Virginia, 1955.

Coline Jenkins

Correspondence of Mr. John H. Hunt of Park Avenue, Greenwich, particularly during World War II.

Frances Mead Keeler

Correspondence, documents, invitations from/related to Mead family (also Peck and Smith).

Paul Lindemeyer

The Greenwich Mail (newspaper) February 1966 to March 1969 with gaps (missing January, March, July 1966; May 1967; January, May, August, October 1968). *Welcome To Greenwich* magazine published by Chamber of Commerce, 1964.

Isabel Malkin

Program for exhibition: *Impressionism: American Gardens on Canvas*, New York Botanical Gardens, May 14, 2016 to September 11, 2016.

Pamela Matturro

1940 Greenwich High School graduation program, 1940 Greenwich High School yearbook, Electrolux publications 1950s-1960s, photographs from Electrolux.

Andrew Rocco Melillo

Two-volume set of D'Andrea Family History & Genealogy

written by Andrew Rocco Melillo. Contains genealogy, historical narrative and photographs.

John P. D. Moore

Folder of papers related to the Mystery Club including list of all papers, with authors, from 1922 to 1989, a list of articles whose authors or dates are not known, a list of all members of the Mystery Club 1888-1998, a brief history of the Mystery Club (preceding prepared by Walter Wagoner, November 1995). List of missing minutes 1978-1989. Index of papers on file with Historical Society 1989-2002, prepared in March 2003 by Douglas M. More.

Joe & Mary Powers

Ten large file boxes of records, newspaper clippings, meeting minutes, photographs and other items related to the Old Greenwich Yacht Club (1944-1990s).

Ruth Reed

Framed page from *Sound Beach Beacon*, August 9, 1902; Greenwich High School class photograph from 1923; photograph of Dr. Vincent Daniels, pastor of First Congregational Church at Memorial Day ceremony in 1943 or 1944; items from Tercentenary celebration; Sound Beach subdivision map; photographs of C. Carleton Gisborne and F. Reginald Gisborne; items related to the Sound Beach Fire Department; scrapbook.

Lawrence M. Santora

Single-page flyer from Connecticut-American Water Company; Summary of Annual Report, July 1974-June 1975, Town of Greenwich; Putnam Trust calendar from 1990 (Greenwich 350th); Booklet, St. Catherine of Siena, 75th Anniversary, 1913-1988.

Helen M. Semones

1918 letter from Elizabeth Greenwood to her sister (unnamed) at 28 Cassidy Park in Greenwich.

David Silverglade

Atlas of Connecticut Topographic Maps, State of Connecticut Department of Environmental Protection Natural Resources Center, DEP Bulletin 17A; Soil Survey of Fairfield County, Connecticut, United States Department of Agriculture, Soil Conservation Service, in cooperation with Connecticut Agricultural Experiment Station and Storrs Agricultural Experiment Station, Issued February 1981.

Ron and Davidde Strackbein

Circa 1820 map of the State of Connecticut from Carey and Lea American Atlas.



Photo of a parade approaching the intersection of Greenwich Avenue and Lewis Street (c. 1930s or 1940s), donated by Melissa Hill

“Connecticut” New York: Arbuckle Bros., c. 1889. Color-lithograph with original color (Image: 2 $\frac{7}{8}$ " x 4 $\frac{7}{8}$ ").

“Connecticut” New York 1851. Published by Phelps, Fanning and Co. Original woodblock map, two parts joined (Image: 4 $\frac{3}{4}$ " x 8 $\frac{1}{4}$ ").

Joseph B. Young

Brochure for Ely Court, Greenwich, CT.

Robert Weltz

Receipt to O. Mead for P.O. Box rent for year 1876, Box No. 70, \$1.00. dated December 28, 1875, signed by J. E. Brush, postmaster; Sundry Check from Indian Harbor Yacht Club for member J. R. Shumway, dated

September 13, 1938; Receipt for Mr. Ritter Shumway from Indian Harbor Yacht Club dues, semi-annual installment to June 15, 1929; Receipt for Mr. Ritter Shumway for house charges to Indian Harbor Yacht Club dated October 1, 1928.

Leif Wennerstrom

Ely Court school yearbooks, 1910 and 1911.

GIFTS TO THE MUSEUM COLLECTION

Nancy Leinen Chelwick in memory of Ethel Lubkert Leinen and Thomas Jackson Leinen

From the 1920s: Four dresses; man's tuxedo including tails, pants, suspenders, vest, gloves,

“[If] we throw away the past... we lose a sense of community and with it a sense of belonging and kinship... We should not waste it. We should cherish it and preserve it...”

—*Davidde Strackbein, Chairman*

spats and top hat; photo of donor's parents wearing tuxedo and dress; capelet; four embroideries with French jet beadwork; two pairs of women's shoe buckles.

Ruth Wescott Duncan

Four spearheads; tin candle snuffer, The Sunday Toy—Apostles Creed; dominoes.

Dr. Christine I. Oaklander in honor of Susan Richardson

Carolyn Campbell Mase (1880–1949) Untitled [Woodland Scene, Utica, NY], n.d. Oil on canvas

GIFT TO THE EDUCATION COLLECTION

Kayoko Tanaka

Three ikebana flower arrangements for Bush-Holley House.



"Sunday Toy" donated by Ruth Wescott Duncan

829

researchers found exactly what they were looking for with help from our Archives sleuths

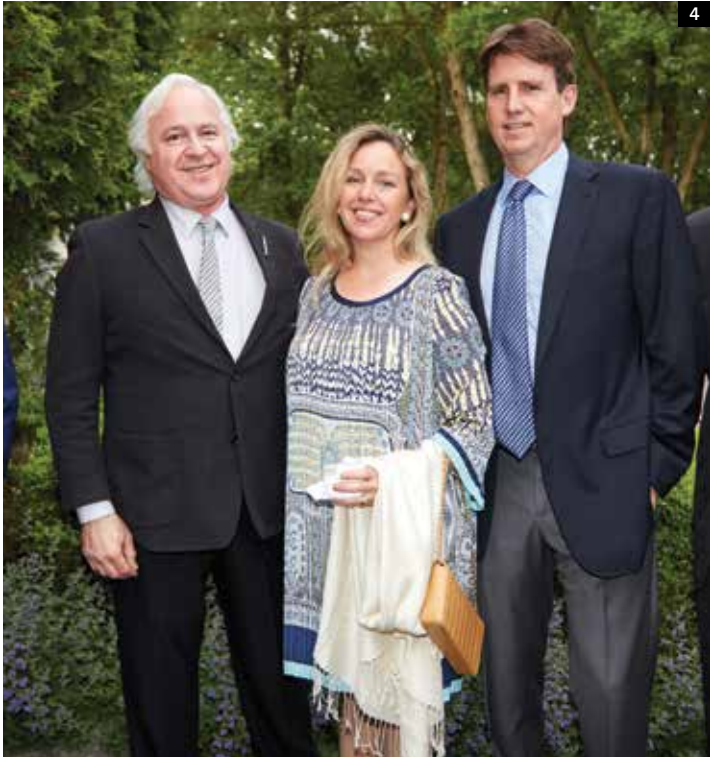


2017 Trust Event

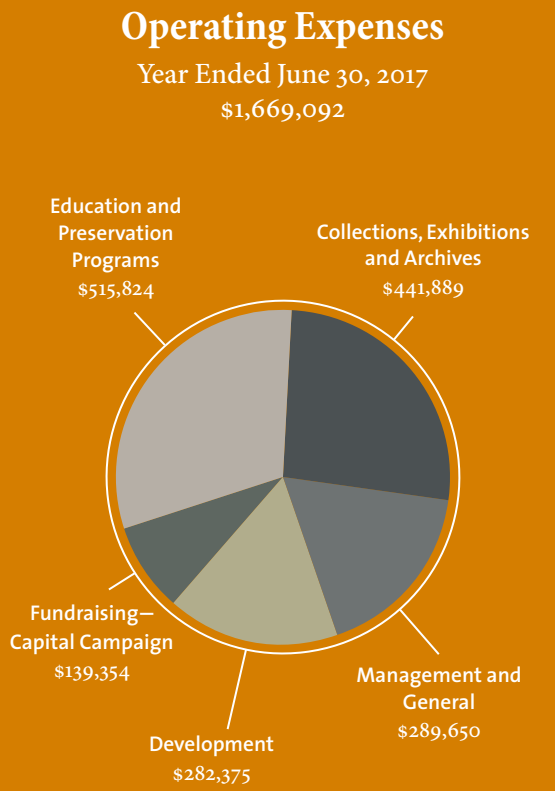
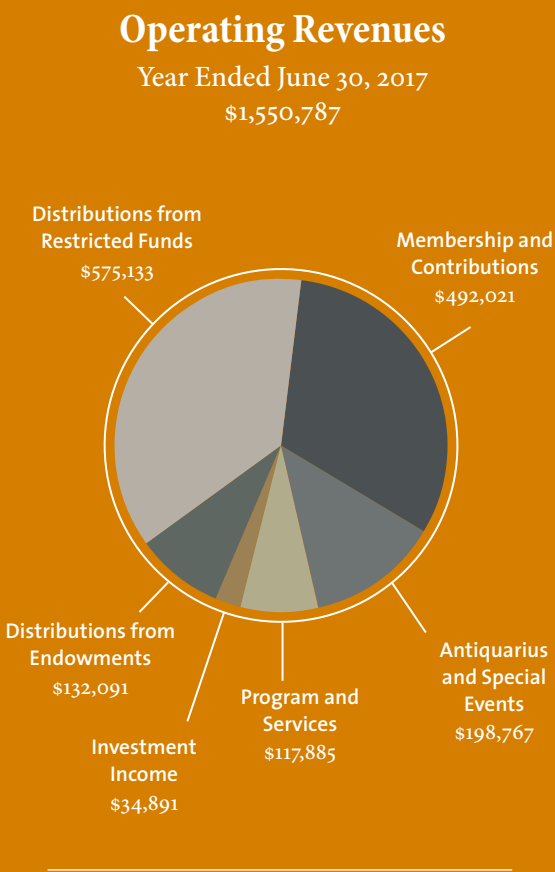
Thanks to our generous donors, the Greenwich Historical Society can continue to shape future citizens, give families a sense of place in our community, archive and preserve important materials, present informative programs, offer fascinating exhibitions and advocate for preservation. On May 24 the Historical Society honored donors to the Greenwich Historic Trust at a private reception at the home of board member Lynne Wheat.

Guests were treated to an *al fresco* presentation on porcelain by *Antiques Roadshow* experts David Rago and Suzanne Perrault. The event was chaired by board members Anne Ogilvy and Robert Getz and generously underwritten by Northern Trust. A special thanks goes out to Lynne Wheat for her gracious hospitality.

- 1. Guest speaker Suzanne Perrault, Lynne Wheat, Anne Ogilvy, Emma Pennington
- 2. Ron Strackbein, David Ogilvy, Peter Malkin
- 3. Robert H. Getz and Ramsey Frank
- 4. Guest Speaker David Rago, Lauren and Gray W. Hampton, III



The charts below show the breakdown of operating revenue and expenses for the year ended June 30, 2017, which resulted in an operating loss (excluding investment gains) as shown in the accompanying Financial Highlights. The audited financial statements and Form 990 will be posted on our website.



FINANCIAL HIGHLIGHTS The fiscal year that ended June 30 has been an extremely busy one—conducting a capital campaign and beginning a major construction project in addition to all of the usual programmatic activities. Remarkable progress has been made in the capital campaign. Thanks to the outstanding leadership of Peter Malkin and the campaign committee, we are within \$900 thousand of reaching the goal of \$6.75 million that is being matched dollar-for-dollar.

Operations for the fiscal year that ended June 30 saw an operating deficit of about \$118 thousand on a budget of \$1.7 million. Expenses were slightly below budget. While the financial resources of the Historical Society are more than sufficient to absorb this shortfall, our objective is to operate at least at a breakeven budget. And that is what has been budgeted for fiscal 2018.

The Endowment Fund at June 30 had a market value of \$4.3 million, up about 8% over the year. The finance committee, chaired by Gray Hampton, periodically evaluates the endowment fund manager, which is The Investment Fund for Foundations (TIFF), and is satisfied with their performance.

Through June 30, \$500 thousand had been pledged toward the endowment goal of \$5 million; that is an excellent start.

And finally, thank you all for your continued support. — Bruce Dixon, *Treasurer*

Unrestricted Funds	June 30, 2017	June 30, 2016
Revenues and Assets Released		
Membership and Contributions	492,021	571,227
Program and Services	117,885	179,492
Antiquarius and Special Events (net)	198,767	205,255
Investment Income	34,891	36,560
Distributions from Endowment and Restricted Funds	707,224	733,600
Total Revenues and Assets Released	1,550,787	1,726,133
Expenses		
Education and Preservation Programs	515,824	533,331
Collections, Exhibitions and Archives	441,889	393,893
Management and General	289,650	304,763
Development	282,375	274,488
Fundraising — Capital Campaign	139,354	304,383
Total Expenses	1,669,092	1,810,857
Operating Gain (Loss) Before Investment Gain (Loss)	(118,304)	(84,724)
Investment Gain (Loss)	41,349	(60,855)
Change in Net Assets	(76,955)	(145,579)

Balance Sheet		
Cash and Equivalents	1,458,013	573,480
Other Current Assets	2,375,028	1,926,645
Construction in Progress	2,118,591	460,272
Long-Term Investment	5,692,117	4,782,017
Property, Equipment and Furnishings – net of depreciation	6,676,990	6,729,539
Liabilities	(379,792)	(115,802)
Net Assets	17,940,945	14,356,152

Fund Balance		
Unrestricted		
Board Designated	695,503	711,265
General	8,774,981	7,198,568
Temporarily Restricted	4,535,303	2,911,161
Permanently Restricted (excluding appreciation of \$895,258)	3,935,158	3,535,158
Total Fund Balance	17,940,945	14,356,152

Advisory Council and Staff

ADVISORY COUNCIL

Nathan R. Allen III
Norma M. Bartol
Susan J. Bevan
Margaret Bragg
Carol Browne
Carol Crapple
Aris G. Crist
Bea Crumbine
John and Carol Dixon
Lisa Edmundson
Patti Fast
Michael Funck
Regina Pitaro Gabelli
Julie Graham
Myrna Haft
Anne Harrison
Charles Hilton
Christopher C. Holbrook
E. Pendleton James
Anita Joslin
Michael Kovner
Susan G. Larkin
Bonnie Levison
Susan Lynch
John W. Moffly IV
Jennifer Moross
John M. Morris
John E. Nelson
Sara Nelson
Anne Niemeth
David F. Ogilvy
Sabrina Raquet
Russell S. Reynolds, Jr.
Charles M. Royce
Meriwether Schmid
Susan Shanks
Valerie Stauffer
John L. Townsend III
Robert and Lucy Walsh
Irene Zelinsky

STAFF

Debra L. Mecky, Ph.D.
Executive Director and CEO

Barbara Bishop
*Marketing and
Communications Consultant*

Victoria Bruzzese
Special Events Manager

Michele Couture
*Director of Operations
and Visitor Services*

Katrina Dorsey
Director of Development

Suzanne Flinn
Operations Manager

Karen L. Frederick
Curator of Museum Collections

Anna Marie Greco
Curator of Education

Stasha Healy
Communications Director

Laura Kelly
Development Associate

Jingwei Li
Director of Finance

Laura McCormick
Public Relations Consultant

Christopher Shields
Director of Library and Archives

LoriBeth Talbot
*Manager of School and Youth
Programs and Camp Director*

Nola Taylor
Researcher



2017 Staff (left to right): Christopher Shields, LoriBeth Talbot, Anna Greco, Suzanne Flinn, Jingwei Li, Debra Mecky, Karen Frederick, Katrina Dorsey, Victoria Bruzzese, Stasha Healy, Michele Couture, Laura Kelly

Major Gifts

July 1, 2016–June 30, 2017

The Greenwich Historical Society thanks the following contributors to our Major Gifts program, including the Greenwich Historic Trust, who advance our strategic plans and initiatives. The following generous donors and corporate sponsors support the Historical Society’s public programs, preservation and tours of the National Historic Landmark Bush-Holley House, education programs for students and families, bi-annual exhibitions, research and preservation services, the digital collections portal and the many print and online publications.

GREENWICH HISTORIC TRUST

**Leadership Circle
(\$25,000 and up)**
Isabel and Peter Malkin
Roxanne and Hugh Vanderbilt, Jr.

**Preservationists
(\$10,000–\$24,999)**
A.P. Construction
The Ashforth Company
Betteridge
Douglas VanderHorn Architects
Suzanne and Ramsey Frank
Regina and Mario Gabelli
Jeanine and Robert H. Getz
Michael Kovner and Jean M. Doyen
de Montailou
Northern Trust
Anne and David Ogilvy
Amy and Brian C. Pennington
Russ and Debbie Reynolds
Deborah Schmidt Robinson and
Dr. Rowland Robinson
Deborah and Chuck Royce
Susan and Gene Shanks
Davidde and Ronald G. Strackbein
Marree and John Townsend
Lynne Wheat

**Collectors
(\$5,000–\$9,999)**
Susan and David Brownwood
Charles Hilton Architects
Roberta and Steve Denning
Fairfield County Community
Foundation, Donor Advised Fund
Melissa and Carney Hawks
M.E. and Gudmundur Kjaernested
Barbara MacDonald
Alice Melly
Claire and Joe Morrow

NEBCO Insurance Services, Inc.
Catherine and Dave Tompkins
Sue Ann Weinberg

**Historians
(\$2,500–\$4,999)**
Ashley and Mark Allan
Anonymous
Margaret Bragg
Connie and Tom Clephane
Carol and George Crapple
Marvin Davidson
Lucy and Nat Day
Helen and Bruce Dixon
DOYLE
John Freeman
Ellen and Michael Funck
Heather and Andrew Georges
Jessica and Drew Guff
Marsha and Carl Hewitt
Mr. and Mrs. George Host
Elizabeth Hubbell
Betty and Pen James
Susan and Jim Larkin
Sally and Larry Lawrence
Susan Lynch
Dinny and Lester Morse
Lindsay and Dave Ormsby
Emma and Mark Pennington
Natalie Pray
Lucy and Larry Ricciardi
Kate and Ray Rudy
Leigh Ann and Robert Ryan
Jane and John Seel
Alease and Paul Tallman

ENDOWMENT FUNDS

*Gifts to the Endowment support
the Historical Society’s general
operations and programs in perpetuity.
We gratefully acknowledge the following
named endowment funds:*

Antell Family Fund
William C. Crooks Fund
Roberta and Steven Denning,
Title I School Program Fund
Isabel and Peter Malkin Fund
Russell and Deborah Reynolds Fund
Claire and Hugh Vanderbilt Fund
David R. A. Wierdsma Fund

GIFTS IN HONOR OF
AND GIFTS IN MEMORY OF

Mr. and Mrs. Kenneth G. Bartels in
memory of Mr. William Crooks
Mr. and Mrs. James F. Bell in honor of
Michele and Steven Litt
Ms. Susan J. Bevan and Mr. Anthony F.
Daddino in honor of Karin Crooks
Ms. Carolyn S. Bonheim in honor of
Bea Crumbine
Ms. Deborah Bogin Cohen in honor of
Isabel and Peter Malkin
Mr. and Mrs. Daniel Dunson in honor
of Isabel and Peter Malkin
Mr. and Mrs. Michael Genereux
in honor of Alease Tallman and
Jessica Guff
Mr. and Mrs. Thomas F. Hartch in
memory of Mr. Michael Flinn
Mr. Jordan Haviland in honor of
Isabel Malkin
Mr. and Mrs. Stephen Hoffman in
honor of Peter Malkin
Mrs. James B. Hurlock in memory of
James Hurlock
Mr. and Mrs. Elliot Jaffe in honor of
Isabel and Peter Malkin
Mr. Arnold Loeb in honor of
Karen Frederick
Ambassador John L. Loeb, Jr. in honor
of Jessica Guff and parents
Mr. and Mrs. James Mabie in honor of
Bea Crumbine
Ms. Elizabeth Lummis Malkin in
honor of Isabel Malkin
Mr. and Mrs. Donald K. Miller in
honor of Jessica and Drew Guff
Mr. and Mrs. Lester S. Morse Jr. in
honor of Isabel Malkin
Ms. Fi Fi Sheridan and Mr. Paul
Barbian in honor of Bea Crumbine
Mr. and Mrs. Malcolm H. Wiener in
honor of Isabel and Peter Malkin
Mrs. William A. Zales in honor of
Isabel Malkin

GIFTS IN KIND

Ann’s Hobby Shop
Artistic Upholstery
Betteridge
Branca Inc.
Carl Mecky Architecture & Planning
Charles Hilton Architects
Cornerstone Contracting
DIRT Floral
Garden Catering
GIFF
Greenwich Orchids
Greenwich Town Party
Juliska
Kirby & Co.
Marcia Selden Catering
McCormick PR
My Life in Parties
OOMPH
Putnam and Vine
Randy’s Wines
Riverside TV & Lamps
Round Hill Hotel and Villas
Rummage Room
Sanctuary Garden Design, LLC
Smart Kids Toys
Summer Rain
The Little Pub
Thornton Design
Tradewind Shuttle
Whole Foods
World Seido Karate Organization



- 1. Joseph J. Morrow, an outstanding supporter and member of the Board of Trustees since 2009, with his wife, Claire
- 2. Russ and Debbie Reynolds, Sen. Scott Frantz and Icy Frantz
- 3. Deborah and Chuck Royce

Annual Fund

The Greenwich Historical Society thanks the following donors to the Annual Fund whose contributions enable the Historical Society to fulfill its mission to preserve the history of the community for future generations. We extend our deepest appreciation to all of our donors.

Benefactors

(\$1,000–\$2,499)

Chubb Corporation
Ann Elliman
Ellen and Michael Funck
Anne and Bill Harrison
Mr. and Mrs. Havranek
Alice and Chris Holbrook
K.K. and George Lowther
Mary and Garrett Moran
The Richard Laurence Parish Foundation
Shirley Sontheimer
Mrs. Langdon Van Norden
Mr. and Mrs. Malcolm H. Wiener
Missy and Scott Wolfe

Deborah Cohen
Ms. Cynthia Conway
Mary Jane and Earle Cote
Betty Davies
Irene Dietrich
Sharon and Sam Fortenbaugh
Diane and Edward Fox
Jeffrey Frase
Lynn Friend
Lynn Garelick
Greenwich Concours d'Elegance
Mrs. Jane Hall
Marjorie Hauer
Mr. and Mrs. Joseph Havranek
Nancy and Jim Healy
Mr. and Mrs. Norman Heller
Robyn Helmer
The Horseneck Foundation
Peggy Imbrogno
Theodore Karchuta
David Kniffin
Penelope Lehman
Carolyn and James B. Lockhard III
Janet and Steve Lockton
Mr. Arnold Loeb
Mr. Oivind Lorentzen
Margot and James Mabie
Dr. Henning Maier
Ellen Mancini
Dolly and John Margenot
Tony Martini
Katharine Minton
Cecilia and Robert Morgan
Betsy and Bob Mulcare
Vickie and Jim Munsell
Cricket and Peter Ness
Penny and Bucky Putnam
Gerald Reilly
Meriwether Schmid
Charline and Tony Shaw
Fi Fi Sheridan and Mr. Paul Barbian
George Sherwin
Nancy Smith
Jill and Peter Tesei
Arthur Thomas
Barbara Thompson
Cindi and Daniel Tredwell

Mr. and Mrs. Uhry
Beverly and John Watling
Candee Weed
Noble Welch
Rebecca and David West
Joe Williamson
Karen and Robert Wylie
Mugs Zales



Jessica Guff and Snoop Dog visit the Storehouse Gallery

Gifts up to \$499

Jean and David Ayres
Lucy and John Barrett
Jane and Ken Bartels
Norma Bartol
Hsiao-Lien and James Boardman
Barbara Bologna
Ms. Carolyn Bonheim
Carole Boucher
Erin Brinton
Josephine and Roger Bullard
Betsy Burke
Elizabeth and John Butler
Patricia and Gil Caffray
Kim and Randy Caravella

Patricia and Gary Berkman
Susan Bevan and Tony Daddino
The First Bank of Greenwich
Elizabeth Lummis Malkin
Debra and Carl Mecky
Vickie and Jim Munsell
Andra and Elliot Newman
Alma Rutgers
Beth Ryder and Michael P. Tierney
The Winokur Family Foundation

Members

We thank the following members at every level for their commitment to the Historical Society and for their ongoing support of our mission.

Benefactors

Adelaide McManus
Ms. Josephine A. Merck

McKenzie and Kees van Meel
Beverly and John Watling
Lynda and Jack Withiam

Patrons

Joso and Roger Bullard
Diana and Lyman Delano
Mr. Joseph Demarco
Elizabeth and Robert Kirkpatrick
Catherine Ladnier and Mickey Robinson
Jennifer and Dominic Moross
Trey Reynolds

Sponsors

Victoria and Stephen Ambrose
Elizabeth Inson and Theresa Apuzzo
Jeanmarie and Bill Baker
Sue Baker
Richard Bartholomew
Hugh Barton
Patricia and Gary Berkman
Laura and Daniel Botoff
Erin Brinton
Nancy and Duncan Burke
Lynne and Anthony Carvette
Cynthia Chang Scanlan and Brian Scanlan
Cynthia and Ronald Conarroe
Bitsy Connolly
Ginny and John Costaregni
Lizzie and Geoff Craddock
Justine Cuff and Ulf Lindahl
Laura Dahm and John Kavounas
David Darst
Lennie and John de Csepel
Nancy and Donald Dworken
Fran Enslein
Jennifer and David Evans
Heather Ewing
Susan Ferris
Rosita and Mark Fichtel
Mr. and Mrs. Ray P. Foote, Jr.
Bill Foulk
Barbara Freeman
Susan Frieden
Sheila and Robert Fuller
Michele and Henry Gasiorowski
Anne Gilhuly
Judy Goss
Annmarie and Tim Graham
Green Fingers Garden Club Inc.
Elise and Peter Griffin
Mirella and Hadi Hajjar
Jackie and Bill Hammock
Jordan Haviland
Nancy and Jim Healy
Rita Henderson
Mary and Phil Huyck
Jane and Alex Jackson

Donors

Rita and Merl Baker
Lucy and John Barrett
Nancy Bernard
Ann and John Caron
Dottie Cholnoky
Alexandra and Lawrence Codraro
Dr. and Mrs. Coggins
Tony Correale and Cora Burnham
Ginny and Sean Day
Carol and Allan Deering
Ellen and Bill Galvin
Jean and Reynolds Girdler
Darcy and John Hadjipateras
Mary Ann and Bob Haidinger
Maria and Carl Higbie
Judy Higgins
Edna and Harry Keleshian
Libby and Charlie King
Mimi and Don Kirk
Pat and John Klingenstein
Seen and Fred Landman
Jack Larkin
Helene and Alain Lebleu
Cricket and Jim Lockhart
Kristina and Frank Loverro
Crozer Martin
Elisabeth and Joseph McLaughlin
Angenette and Bob Meaney
Lu and Jack Morris
Susan and Robert Morris
Cricket and Peter Ness
Beverly and Peter Orthwein
Ted Pardoe
Richard Schulze

Jean Marie and Doug Jamieson
Patty and Charles Kaufmann
Anita Keefe
Barbara and Joseph Kennedy
Kathleen Knight
Dick Kriskey
Lea and Thomas Kuck
Sally and John Kuck
Mary Ellen and Harry LeBien
Janet and Don Marchand
Dolly and John Margenot
Frank Mazza
Pat and Miles McDonald
Tracy and Paul McKenna
Joan and John Mendenhall
Rosalie Monahan
Nancy and Paul Mortimer
Phyllis and Bruce Nicholas
Ross Ogden
Barbara O'Shea
Anita and Jeff O'Sullivan
Lela and Thomas Philip
Lolly Prince
Hiroko and Harry Sakamaki
Diana and Peter Samponaro
Thelma Serenbetz
Debra and Marc Shore
Cheryl and Michael Siegmund
Liz and Everett Smith
Pamela Smith
Frank Smurlo
Lauren and Danny Stein
Caralyn and Douglas Stevens
Emily Toohey
Faith and Darius Toraby
William Wagner
Ted Walworth
Candee Weed
Jane Weitzman
Nancy and Leonard Wells
Sarah Whittemore
Don Wiesen
Webb Williams
Mrs. Pauline S. Willis

Dual/Family

Kathy Adams
Jacquelyne and Julius Alexander
Carolyn and Jerry Anderson
Rebecca and Bill Andruss
Carolyn Baek
Susan and Philip Bartels
Anita and John Bausman
Jeanne and John Bennett
Judy and Peter Berg
Jean and Dick Bergstresser
Hilary Bernard
Courtney and Laird Bieger
Mr. Hank Birdsall
Fay and Norm Burger
Anne and Kevin Burns
Ann and John Callahan
Judy and Lou Caravella

Kim and Randy Caravella
Nancy and Richard Connors
Betsey and Jeffrey Cooley
Martha and Jim Crowley
Ms. Elizabeth Cryer
Ellen and Gary Davis
Barbara and David Detjen
Elinor and Jerome Deutsch
Carol and John Dixon
Janet and Corydon Dunham
Diane and Russ Dutcher
Princess Erfe
Mr. Javier Ferrin-Kranewitter
Connie and Mark Figgie
Pauline Frank
Rebecca and Steve Fretty
Linda and Don Fritz
Jenny Fullilove
Cassie and Bill Gaillard
Betty and George Gayola
Ilse Gordon and Neil Shapiro
Anne and Clifton Gray
Marybeth and Joe Greco
Christa and Greg Hartch
Gale and Tom Hartch
Kia and James Heavey
Chrissy Heyworth
Peggy and Garry Higgins
Ann and Bob Hogan
Cynthia Hopkinson
Michelle Horgan
Edward Hortick
Evelyn Iversen
Estelle Jones
Kathleen and Peter Joyce
Irene and Don Kerr
Susan Kramer
Maj-Britt and Stig Lagergren
Olivia Langston
Mr. and Mrs. Chris Lodge
K.K. and George Lowther
Helen and Brian Maher
Christina Mangum
Louise and Sam Marasso
Jane and Stuart Marsh
Anthony Marzullo
John Mead
Betsy and Bob Mulcare
Helen and Hooker O'Malley
Jane and Gary Palmer
Susan and Bret Rattray
Heather and Creighton Reed
Joseph Reed
Christina and Mike Russell
Louise and Stephen Salzer
Fi Fi Sheridan and Paul Barbian
Charles Shipman
Martha Shoemaker
Anthony Silvey
Margaret Esme Simon and David Weisbrod
Mary and Herc Sotos
Catherine Stahl

Kimberly and William Sushon
Leslie and Marcus Tarkington
Sydney and Peter Uhry
Marie Williams
Edie and Ron Wilson
Ellen and Michael Wolfson
Katy and Dean Young
Dr. and Mrs. Zitzmann

Individual Senior

Valerie Ahneman
Elaine Andersen
Lynda and Tom Armbruster
Alicia and Richard Arnold
Gary Bashian
Caryl Bate
Lynda Biggs
Ann Blumensaadt
Carole Boucher
Anne Bradner
Alice Brennan
Dawn Brown
Ms. Elizabeth Buddy
Carol and Michael Catalano
Jackie Chamandy
Julia Chiapetta
Olimpia Chiappetta
Christiane Citron
Bill Clark
Rita Cody
Ginny Coudert
Kate Cowan
Connie Cowen
Marguerite Curtis
Kathleen D'Aloisio
Betty Davies
Joanne Dearcopp
Marie D'Elia
Elizabeth DeVan
Katie Dimancescu
Alice Duff
Ruth Duncan
Louise Dunn
Karen Fassuliotis
Joan Faust
Richard Feder
Mimi Findlay
Sandra and Vincent Fiorentino
Polly Fritch
Lynn Garelick
Millie George
Swan Grant
Karen Griffiths
Joyce Grund
Ms. Deirdre Hamill
Gillian Hannum
Madeline Hart
Claire Henriques
Linda Hodge
Barbara Hopkins
Lyn Hurlock
Jeremy Kaye
Karen Kelly

Janet Kirwan
Janet Kraemer
Robert Krasnor
Joy Land
Kathleen Langan
Judith and Stephen Latham
Mr. Peter Le Beau
Leah Ann Liptak
Michelle and Steven Litt
Birgitta Longnecker
Ms. Siobhan Lugo
Wendy MacPhedran
Ms. Jan Marom
Sue McClenachan
Laura McCormick
Josephine Merck
Joann Messina
Jane Milliken
Dallas Molerin
Gail Moloney
Lynn Montanari
Muriel Morigi
Danne Munford
Ms. Elizabeth Nolan
Brigitte and Richard Obetz
David Oglesbee
Mr. and Mrs. Orbanowski
Barbara Ostrom
Nancy Palamarcuik
Rhoda Pappenheimer
Lee Parfrey
Christopher Peck
Jenny Pitman
Mary Powers
Bunny Prokop
John Provino
Adele Raspe
Coverly Rees
Mr. and Mrs. Dylan Reid
Stuart Reider
Keri Reitman
Joy Rendahl
Loraine Salerno
Dirk Salomons
Melissa and Robert Santangelo
Judy Schedler
Laura Schroeder
Nancy and Alan Schwartz
Renee Seblatnigg
Christine and Rolf Sellge
Renate Setten
George Sherwin
Lavelle Shields
Beverly Siemon
Susan and Robert Solomon
Linnea Stenberg
Louisa Stone
Ruth Streeter
Blair and Preston Stuart
Lexy Tanner
Mr. Peter Thoren
Paula Timmerman
Cindi and Daniel Tredwell



Sally Maloney, second-prize winner in *This Place Matters* photo contest, flanked by granddaughters Mason (left) and Teddy (right)

Tatiana and Bob Tuthill
Brita von Regensburg
Gail Wallace
Jieun and David Wax
Maggie and Marc Wein
Mr. and Mrs. Robert Weltz
Susan Whitney
Steven Worthy
Mary-Alice Yates
Katy and Dean Young
Irene and Carl Zelinsky
Andrew Zieba

Volunteers and Docents

July 1, 2016–June 30, 2017

Kudos to our fabulous volunteers, who are deeply involved in every aspect of our mission. Their contributions of time, energy, creativity and wise counsel enable us to stay relevant as we evolve to meet the needs of the community.

Thanks to you all for recognizing the value of our town’s past stories, for understanding their impact on contemporary life and for having the foresight to appreciate the enormous importance they hold for future generations.

Antiquarius

Noreen Agri
Ashley Allan
Gillott Allison
Caroline Atkins
Lindsay Barth
Kathleen Bembenek
Courtney Bieger
Elizabeth Bing
Scottie Bonadio
Alessandra Branca
Jacki Brew
Emily Brown
Ashley Bruynes
Kelly Buchalter
Gia Burton
Molly Calhoun
Holly Cao
Casey Carey
Lucy Cary
Holly Cassin
Barbara Clark
Anne-Laure Coby
Cynthia Crecenzo
Bea Crumbine
Melanie Dabbs
Lindsay Dalton
Vivian Dixon
MaryAnn Safione Drago
Nancy Dunn
Jane Elliot
Caroline Emery
Kolleen Evers
Katie Feinberg
Laurel Fine
Donna Fiore
Victoria Frank
Lyndsey Frankel
Claire Fusezi
Frank Gaglio
Emily Garrett
Jeanine Getz

Blake Giffin
Ellen Gittes
Kirby Grabowski
Katy Gray
Dana Hammack
Angie Hartofilis
Melissa Hawks
Cynthia Herr
Susannah Heyworth
Stacey Higdon
Suzanne Eason Hopson
Alice Hoyt
Suzanne Hoyt
Emily Hulce
Erica Jacoby
Layla Jafar
Amy Johnson
Keely Jordan
Taylor Kearns
Rachel Suzanne Kelley
Zoe Khayatt
Hellen Kim
Janet Kirwan
Alicia Laing
Elizabeth Merck Lake
Kristin Lang
April Larken
Rachel Liersch
Nina Lindia
Maria Lund
Barbara MacDonald
Kyle MacDougall
Rita Magasiner
Gail Mahoney
Cheryl Makrinos
Louise Marasso
Susan Marino
Christine Massaro
Sheila May
Camilla Love McGraw
Shaheen Medeiros
Beth Miranda

“I reluctantly came to a meeting to discuss transportation and security for [Antiquarius]. Little did I know that I would become the chair of the committee the same year....Not only was I able to see beautifully decorated homes and the varying architecture of our amazing town, but as a newcomer, I met ladies who have since become close friends.” — *Suzanne Hopson Eason*

Samantha Noelle Mollett
Janea Neuenfeldt
Melissa Nisenson
Ana Nystedt
Ginny O'Donohue
Anne Ogilvy
Barbara Ohl
Sarah Osnoss
Susan Osnoss
Erin Oveissi
Rose Marie Palmieri
Deborah Schmidt Robinson
Leigh Ann Ryan
Tracy Salvatore
Lynn Schwartz
Polle Seidel
Wendy Cheng Shell
Anjali Sherman
Laura Shribman
Jacquelyn Smith
Nancy Speranza
Jennie Stehli
Ali Stevens
Kathryn Stewart
Davidde Strackbein
Laura Sullivan
Megan Sullivan
Alease Fisher Tallman
Lisa Tannenbaum
Kelly Thomas

Amanda Todd-Lynch
Catherine Tompkins
Katie Tricot
Katie Vadasdi
Sree Vaid
Meg Nolan van Reesema
McKenzie VanMeel
Rhya Volkwein
Chrissy Ward
Robyn Wasserman
Betty Watson
Amanda Wilson
Lynn Wilson
Sam Woodruff
Jennifer Zulli

Archives

John D. Knox
Wendy Mead
Reverend Liz Wold

Museum Collections

Lily Downing
Susan Larkin
Mary Ellen LeBien
Isabel Malkin
Meriwether Schmid
Davidde Strackbein



Executive Director Debra Mecky and First Selectman Peter Tesei present the 2017 Volunteer of the Year Award to Board Member Bea Crumbine

Education

Fiona Busch
Mya Dorsey
Joseph Greco
Marybeth Greco
Bridget Groves
Annabelle Hartch
Liza Kame
Jack Liebenguth
Renee Seblatnigg
Ellie Sileo
Catherine Sushon

Russ and Debbie Reynolds
Adam Rhodie
Leigh Ann Ryan
Hiroko and Harry Sakamaki
Chelsea Schaeffer
Nancy Seaman and Alan Schwartz
Susan Sleeper
Alease and Paul Tallman
Lee Ann Thornton
Catherine and Dave Tompkins
Roxanne and Hugh B. Vanderbilt Jr.
Carrie Wallack
Jieun and David Wax

Events

Charlotte Barnes
Courtney Bieger
Scottie Bonadio
Susan and David Brownwood
Ashley Bruynes
Casey Carey
Holly Cassin
Brooke Crew
Bea Crumbine
Leslie and Tom Foley
Douglas Graneto
Jessica and Drew Guff
Melissa Hawks
Stephanie Horton
Kevin Isbell
Kimberly Johnson
Zoe Khayatt
Elaine Kirby
Samantha Knapp
Susan Lehman
Bonnie Levison
Michelle and Steven Litt
Alexandra Macaluso
Isabel and Peter Malkin
Samantha Mollett
Anne and David Ogilvy
Megan Pavia
Amy and Brian Pennington
Emma Pennington
Ellen Reid

Exhibitions

Heather A. Cotter
Thomas P. Clephane
Bea Crumbine
Carol Dixon
Jane Fragner
Ilse Gordon
Jessica Guff
Kathleen Burnside Kilbride
Page Knox
Susan G. Larkin
Barbara Laux
Kim Harke Sushon

Green Team

Virginia Cheney
Michele Couture
Dimple Desai
Joan Faust
Jonathan Glass
Anna Greco
Joe Greco
Yuka Kominami
Susan Norton
Catherine Stahl

Greenwich Landmarks Program

Ashley Allan
Ashley Cole



Antiquarius 2017 Leaders (left to right), standing: Suzanne Eason Hopson, Rachel Kelley, Leigh Ann Ryan, Jacki Brew, Melissa Hawks, Catherine Tompkins, Zoe Khayatt, Carrie Emery, Deborah Schmidt Robinson, Camilla Love McGraw, Meg Nolan van Reeseema, Ashley Bruynes, Carrie Wallack, Frank Gaglio; seated: Alease Fisher Tallman, Davidde Strackbein, Barbara MacDonald

Joel Dawson
Carol N. and John M. Dixon
Rachel and Chris Franco
Robert H. Getz
Ira Grandberg
Elizabeth Hopley
Robin Kencel
M.E. Kjaernested
Rose Scott Long
Barbara MacDonald
Donald A. Martocchi
Jack Morris
Anne Ogilvy
Emma Pennington
Jeffrey S. Ramer
Ellen T. Reid
Leigh Ann Ryan
Cheryl Simon
Davidde Strackbein
Alease Fisher Tallman
Beth Taylor
Catherine Tompkins

Marketing

Rachel Franco
Joseph Kantorski
Robin Kencel
Laura McCormick
Carrie Wallack

Preservation Network

Stephen Bishop
Mike Bocchino
Fred Camillo
Josephine Conboy
Katie DeLuca
Nancy Dickinson
Diane Fox

Chris Franco
Cameron Henry
Charles Hilton
Will Kies
Debra Mecky
JoAnne Messina
Jack Morris
Daniel Pardy
Paul Pugliese
Mark Pruner
Russ Reynolds
Denise Savageau
Christopher Shields
Davidde Strackbein
John Toner

Other

Carl Mecky
Susan Oliver Whitney

Docents

Sally Bretschger
John Bridge
Lucy Broome
Lauren De Souza
Wendy Dziurzynski
Chad Ennis
Isabella Ferrante
Loredana Foti
Elizabeth Garcia
Deborah Kupper
Carol Levison
Belinda Pitt
Harry Sakamaki
Nola Taylor
Lucy Van Atta

Reimagine the Campus

Drawing Closer to Our Reimagined Campus

As we enter the final stretch of our \$18.5 million Reimagine the Campus Campaign, the Historical Society could not be more grateful for the tremendous support we have received from the Greenwich community. We are proud to report that we have less than \$1 million to raise toward our campaign goal—all of which will be matched dollar-for-dollar by our anonymous donors—and construction is ahead of schedule.

Designing the new campus on the Bush-Holley Historic Site was a challenge, and we look forward to 2018 when the whole town will be able to enjoy our state-of-the-art facility. This expansion will help us better utilize our nationally significant historic buildings and landscape to serve the entire community in an improved and expanded capacity.

Few towns in this country can match Greenwich’s unique and vibrant history and generosity. This vital campaign will permit the Historical Society to carry forward its mission with a greater contribution to the community. The renewed Greenwich Historical Society will rank at the forefront of the nation’s historical institutions and campuses, placing Greenwich’s story indelibly within the broad context of American history, effectively linking the community’s past with the ever-changing present.

We hope you will join us in thanking the community leaders who made this crucial project possible.

For more information about our plan for expanded facilities and programs, contact Katrina Dorsey at kdorsey@greenwichhistory.org.



Reimagining became a reality! In 2016, thanks to a group of prescient and generous donors, we were able to break ground and begin to build for future generations.



Renderings of the new Visitor Center lobby looking toward the museum shop (left) and the new Library and Archives (right)



Junior Volunteer of the Year Anna Heavy with Curator of Education Anna Greco

Capital Campaign Committee

HONORARY CAMPAIGN LEADERSHIP

Senator Richard Blumenthal and Cynthia M. Blumenthal

State Senator Scott Frantz and Icy Frantz

Greenwich First Selectman Peter Tesei and Jill Tesei

Peter L. Malkin
Campaign Chairman

Bruce Dixon
Suzanne Frank
Robert H. Getz
Barbara MacDonald
Deborah Royce
John L. Townsend, III
Hugh B. Vanderbilt, Jr.

Campaign Consultant
Koszyn & Company

CAPITAL CAMPAIGN CONTRIBUTORS

Leaders
Anonymous
Anonymous
Cynthia and Richard Blumenthal
Roberta and Steve Denning
The Frank Family Foundation
Jeanine and Robert H. Getz
Jessica and Drew Guff
Carl and Marsha Hewitt
Donald and Barbara Jonas
Isabel and Peter Malkin
Laura and Scott Malkin
Deborah and Chuck Royce
S&L Marx Foundation
Heidi and Scott Smith
Davidde and Ron Strackbein
Lisa Tannebaum and David Brownstein
John and Marree Townsend
Roxanne and Hugh B. Vanderbilt, Jr.
Sue Ann Weinberg and Jean W. Rose

Pioneers
Anonymous
Anonymous
Andy Ashforth
Lawrence Benenson
David and Susan Brownwood
Carol and George Crapple
Haley and Joe Elmlinger
Patricia and Eric Fast
Livvy and Doug Floren
Icy and Scott Frantz
Pam and Bob Goergen
Myrna Haft
Anne and William Harrison
Alice and Christopher Holbrook
Michael Kovner and Jean Doyen de Montaignou
Susan and Jim Larkin
Lewis Lehrman
Evelyn Lorentzen-Bell
Barbara MacDonald
Arlene and Reuben Mark
Dinny and Lester Morse
Deanna and Steve Mulligan
Anne and Charles Niemeth
Anne and David Ogilvy
Sabrina and Walter Raquet
Russ and Debbie Reynolds
Lucy and Larry Ricciardi
Heidi and Scott Smith
Robert and Gillian Steel
Catherine and David Tompkins
Beverly and John Watling

Trail Blazers
Connie and Tom Clephane
Helen and Bruce Dixon
Rachel and Chris Franco
Lauren and Gray W. Hampton, III
M.E. and Gudmundur Kjaernested
Leora and Steve Levy
Susan Lynch
Alice Melly
Lindsay and David Ormsby
Amy and Brian Pennington
Ellen and John Reid
William L. Richter Family Foundation
Leigh Ann and Bob Ryan
Lucy and Mark Stitzer
Beth and Beau Taylor
Lynne Wheat
Carolyn and Malcolm Wiener

Pathfinders
Ashley and Mark Allan
Elaine and Andy Bronin
Louis and Virginia Clemente Foundation
Deborah Bogin Cohen
Dan and Cheryl Dunson
Joan Faust
Desmond and Muffy Fitzgerald
Megan Flanigan
Fogarty Cohen Russo & Nemiroff LLC
Virginia and Mike Genereux
Stephen Hoffman
Lyn Hurlock
Jaffe Foundation
William and Stefanie Kies
Ned and Ann Lamont
Debra and Carl Mecky
Donna and Jack Moffly
Peter and Susi Orbanowski
Harley and Steve Osman
Suzanne Peisch
Emma and Mark Pennington
Deborah Schmidt Robinson and Perry Robinson
Alma Rutgers
Mary Corson and Jonathan Sackler
Emily Scott
Beverly Siemon
Debby and Craig Stapleton
Betsey and Michael Vitton
Carrie and Russell Wallack

Public Support
Community Development Block Grant, State of Connecticut
State of Connecticut Urban Act



Announcing... The Vanderbilt Society

We are pleased to announce the launch of the Vanderbilt Society, our newest initiative and a core part of our Reimagine the Campus Campaign.

Since the Greenwich Historical Society was founded in 1931 to collect, preserve and share the history of our exceptional town, several members have included bequest provisions in their wills to support our important mission. An outstanding example of this tradition was provided by the late Claire Vanderbilt, who was instrumental, along with her husband Hugh, in advancing the Historical Society’s role in Greenwich for almost 50 years. Among her memorable efforts was a bequest, which, combined with material contributions from other generous donors, facilitated the purchase of Toby’s Tavern, a critical component of the current expansion of our National Historic Landmark campus.

In honor of Claire and Hugh, we have designated the Vanderbilt Society to recognize individuals who include a bequest to the Greenwich Historical Society in their estate planning. Bequests of all sizes enable us to welcome more members of our community and beyond to learn and be inspired by the archives, exhibitions and education programs, the cornerstones of the Historical Society’s vital contributions to the Town of Greenwich.

We applaud the current members for their dedication to the sustainability of the Historical Society and extend our heartfelt appreciation.

To join the Vanderbilt Society, contact Katrina Dorsey at kdorsey@greenwichhistory.org.

VANDERBILT SOCIETY MEMBERS
as of August 4, 2017

Helen and Bruce Dixon
Haley and Joseph Elmlinger
Suzanne and Ramsey Frank
Jeanine and Robert H. Getz
Betty and Pen James
Barbara MacDonald
Isabel and Peter Malkin
Debra and Carl Mecky
Davidde and Ronald G. Strackbein
Paul van der Stricht*
Claire and Hugh Vanderbilt*
David R. A. Wierdsma*

*Emeritus Members

List as of August 9, 2017.



Celebrating commencement of construction of our new campus, April 9, 2017;
left to right: Bruce Dixon, Andy Ashforth, Tom Clephane, Haley Elmlinger, Livvy Floren, Peter Tesei, Scott Frantz, Davidde Strackbein, Peter Malkin, Debra Mecky, Richard Blumenthal, David Scott Parker, John Dixon and Andy Fox

39 Strickland Road
Cos Cob, Connecticut 06807

Non-Profit Org
U.S. Postage
PAID
Permit No. 1776
Stamford, CT

Greenwich Historical Society

Explore our colorful past



A NEW HOME FOR GREENWICH HISTORY

The reimagined Greenwich Historical Society is the result of the Greenwich Historical Society's Board of Directors, Capital Campaign and Construction Committees. It has been made possible through the generous support of more than 125 private citizens, local businesses and public funding agencies. More than 90% of the Historical Society's \$6.75 million fundraising goal, of which every dollar has been matched, has been achieved to date. If you would like to invest in this great endeavor that will build community value for generations to come, we invite you to call Development Director Katrina Dorsey at (203) 869-6899 and find out what the excitement is about.

For more information, call

203-869-6899 or visit www.greenwichhistory.org