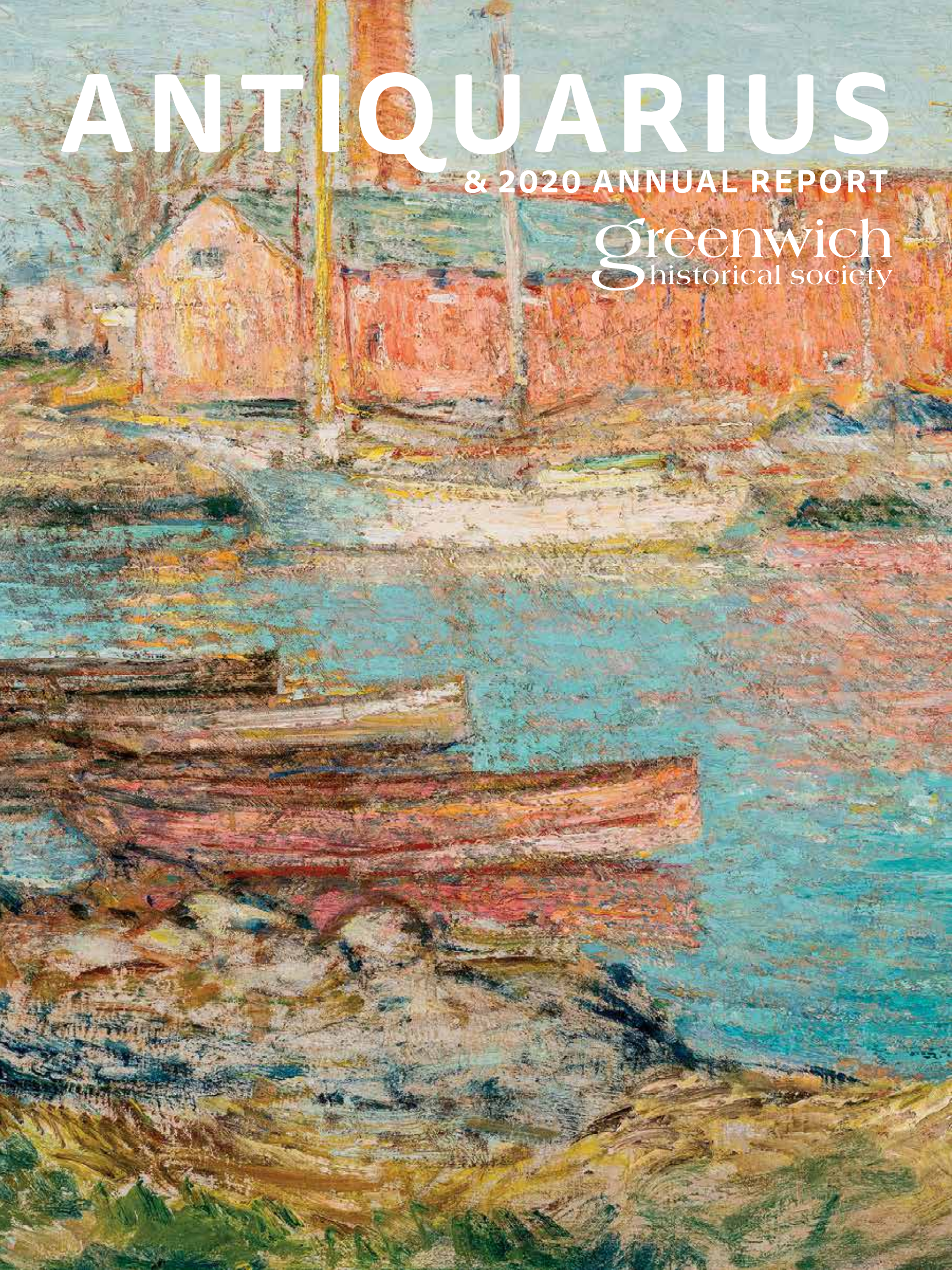


# ANTIQUARIUS

& 2020 ANNUAL REPORT

Greenwich  
historical society





# *Building Better Communities...Together*

---

## The Ashforth Company is proud to support the Greenwich Historical Society



---

INVESTMENT • DEVELOPMENT • MANAGEMENT • CONSTRUCTION

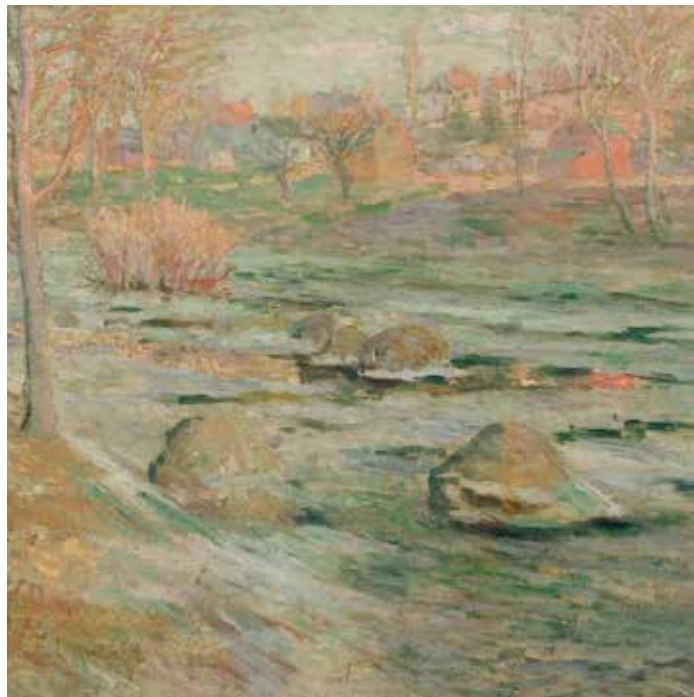
STAMFORD, CT • [ASHFORTH.COM](http://ASHFORTH.COM)

The Greenwich Historical Society  
*presents*

# ANTIQUARIUS

TOGETHER AT HOME

DECEMBER 2-4  
2020







DOUGLAS VANDERHORN  
ARCHITECTS

41 WEST ELM STREET GREENWICH, CT

TEL. 203.622.7000

[WWW.VANDERHORNARCHITECTS.COM](http://WWW.VANDERHORNARCHITECTS.COM)







# Greenwich historical society



Credit: Durston Saylor







# ANTIQUARIUS TOGETHER AT HOME

*A Benefit for*

**Greenwich**  
historical society

## DECEMBER 2-4, 2020

The Greenwich Historical Society Preserves and interprets Greenwich history to strengthen the community's connection to our past, to each other, and to our future.

47 Strickland Road, Cos Cob, CT 06807

Tel: 203 869 6899

[www.greenwichhistory.org](http://www.greenwichhistory.org)

Antiquarius is the largest annual fundraiser for the Greenwich Historical Society. Proceeds from ticket sales, patron support and corporate sponsorships benefit the Historical Society's programs in education, historic preservation and the arts. The Historical Society does not receive any portion of sales from the Greenwich Antiques Show, which is independently produced by Incollect.











LISTEN. ADVISE. EXCEED.®

# WHAT SETS US APART

BridgePoint Risk Management is one of the few firms nationwide with a focus on providing personal risk management solutions for successful individuals, families, and family offices.

We operate on a national platform, with associates throughout the country. We maintain property and casualty insurance licenses in all 50 states, enabling us to respond to our clients' evolving needs. Our team has extensive experience managing the complex needs of business owners, high-profile executives, athletes and entertainers, and collectors of fine art, jewelry, wine and automobiles.

Our boutique service platform, coupled with a sophisticated team of professionals, and independent access to best-in-class markets, ensures you benefit from a competitive, customized insurance program designed to address your specific exposures.

**VISIT [WWW.BRIDGEPOINTRM.COM](http://WWW.BRIDGEPOINTRM.COM)**

**FOR MORE INFORMATION AND TO CONNECT WITH A BRIDGEPOINT RISK ADVISOR**

5 Greenwich Office Park, Greenwich, CT 06831 | 203.274.8010 | [bridgepointrm.com](http://bridgepointrm.com)

GREENWICH. MAUMEE. NAPLES. PALM BEACH. PHOENIX.

*BP Risk and Insurance Services | CA License #018125*





## Letter from our Co-Chairs

Suzanne Frank Heather Georges Catherine Tompkins

Dear Guest,

Welcome to *Antiquarius 2020: Together at Home*. Although current circumstances prevent us from celebrating together in person, we are thrilled to bring you design inspiration, entertaining advice, curated shopping experiences and more — directly to your homes. Beginning on November 30th — and each day during that week — Antiquarius ticket holders will receive an email featuring insights and advice from members of our vibrant Greenwich design community. In addition, Antiquarius participants will receive an invitation to shop our virtual holiday boutique and our virtual antique show, presented by InCollect. Our line-up of virtual events includes a Holiday Entertaining Workshop hosted by Greenwich's own Susan Scully and entertaining guru Eddie Ross, as well as a landscape, design and architecture panel featuring James Doyle, Amy Hirsch and Doug VanderHorn.

For the first time in over 30 years, our eagerly anticipated House Tour will go virtual. Produced by the renown lifestyle blog Quintessence, take a behind the scenes tour of Charlotte Barnes' effortlessly chic Greenwich home, watch Heather Georges set a memorable table and marvel as Patrick Mele transforms a Belle Haven living room into a rich, layered space for holiday entertaining. Finally, patrons will receive a Black Forest Bakery gingerbread house kit, an Antiquarius signature arrangement from McCardles and a takeout dinner from beloved Greenwich institution, Rebecca's. We are grateful to partner with such distinguished local businesses to bring these festive elements safely to your families.

The holidays will be different in so many ways this year — which is why we are delighted to report that the essence of Antiquarius will remain largely the same. We may be physically apart, but together we can enjoy the best of what Greenwich has to offer in the world of antiques, architecture and design. Please know that we are truly grateful for your support. It is vital to the work that we do in education, preservation and in celebrating the history of our diverse and ever changing town. From our homes to your home, we wish you and yours a happy and healthy holiday season and all the best in the year that lies ahead.

Warmly,

*Suzanne C. Frank* *HG* *Catherine Tompkins*

Suzanne Frank, Heather Georges and Catherine Tompkins, Co-Chairs







# Greenwich Connecticut Waterfront Masterpiece

By World Renowned Architect  
Robert A.M. Stern



## Waterfront Condominium Flats

Panoramic Views of Greenwich Harbor | Hinckley Yacht Membership with Captain  
Expansive Private Outdoor Space | Private Dock | Pool

Starting at \$5,850,000 - [CorsairGreenwich.com](http://CorsairGreenwich.com)



Tamar Lurie

**TAMAR LURIE GROUP**  
(203) 836-3332  
[TamarLurieGroup.com](http://TamarLurieGroup.com)



Jen Danzi

## GLOBAL REACH, LOCAL EXPERTISE

With a worldwide network in 43 countries and territories, the Coldwell Banker brand is a true global force. Coldwell Banker Realty agents use international connections, dedicated service, and luxury real estate expertise to market and sell some of the area's most exceptional properties.

# 94,300

INTERNATIONAL AFFILIATED SALES AGENTS

# 3,000

INTERNATIONAL OFFICES WORLDWIDE

# \$144.4 Million

IN \$1M SALES DAILY

# 27,595

TRANSACTION SIDES OF \$1 MILLION + HOMES




**COLDWELL  
BANKER  
REALTY**

[COLDWELLBANKERLUXURY.COM](http://COLDWELLBANKERLUXURY.COM)

203.622.1100 | 203.637.1300

66 Field Point Road | Greenwich, CT

278 Sound Beach Avenue | Old Greenwich, CT

Real estate agents affiliated with Coldwell Banker Residential Brokerage are independent contractor agents and are not employees of the Company. The property information herein is derived from various sources that may include, but not be limited to, county records and the Multiple Listing Service, and it may include approximations. Although the information is believed to be accurate, it is not warranted and you should not rely upon it without personal verification. ©2020 Coldwell Banker Residential Brokerage. All Rights Reserved. Coldwell Banker Residential Brokerage fully supports the principles of the Fair Housing Act and the Equal Opportunity Act. Owned by a subsidiary of NRT LLC. Coldwell Banker, the Coldwell Banker logo, Coldwell Banker Global Luxury and the Coldwell Banker Global Luxury logo are registered service marks owned by Coldwell Banker Real Estate LLC. 



# Honorary Co-Chairs

Greenwich Historical Society and Antiquarius are grateful for the ongoing commitment of this year's Honorary Co-Chairs, Heather and Andrew Georges, Sally and Larry Lawrence, and Susan Scully.



**Heather and Andrew Georges**

## Heather and Andrew Georges

*My husband, Andrew and I have been involved with the Greenwich Historical Society since 2014. When we first moved to Greenwich, we were looking for a way to become involved in our new community. The Historical Society was a natural fit given our interest in preservation and history. We have come to appreciate the Historical Society and its commitment to the community, its mission to provide educational programming to local students and present exhibitions that provide context of the arts in, and of, Greenwich.*

*I love the renovated campus. It is a little gem of a museum, and the barn and garden are an oasis in the heart of Greenwich. I look forward to springtime when we have events outside and are able to enjoy the greenery and new buds in the gardens and grounds.*

As a Greenwich Historical Society trustee since 2019, Heather has served on the Development Committee, the Landmarks Event Committee, the Designer Event Committee and as a 2019 Board liaison to Antiquarius.

## Sally and Larry Lawrence

*Larry and I have supported and attended Antiquarius for as long as we can remember, loving the holiday spirit in all of its events. The Patron Party and Antiques Show have always been a festive launch to the holiday season, joining old and new friends at the party and occasionally finding a memorable purchase at the Antiques Show.*

*We are very excited about the Historical Society's Re-Imagined campus and were thrilled to donate to the History Wall and to the Art Colony Wall. Recently we were proud to have been involved in the acquisition of Childe Hassam's "The Red Mill," painted in Cos Cob of a scene across the brook from Bush-Holley House. Larry and I believe the painting's home was always meant to be the Greenwich Historical Society, one of the finest museums to visit in Connecticut. It is fascinating, to learn about the treasures of Greenwich that we are preserving as part of its history.*

As a Greenwich Historical Society trustee since 2017, Sally has been involved with the Strategic Planning Committee and Collections Committees.



**Sally and Larry Lawrence**

## Susan Watson Scully

*As a new caterer on the scene in 1992, our first opportunity at Greenwich Historical Society was to provide food for the Antiquarius Café. Kathy Slocum and Diddle McAllister, the Antiquarius café co-chairs, are now counted as good friends. By my side was a young man who worked at Watson's after school, named Eddie Ross. Antiquarius was his first real introduction to antiques. He fell in love with all things silver and for any objet d'art presented by Barbara Israel. It was hard to keep him in the café! We continued to cater at the café for years to come. This year, we are thrilled to be co-hosting the Antiquarius Entertaining Workshop.*

*In 2018, Watson's became Greenwich Historical Society's preferred catering partner. The beautiful, historical property had been transformed, allowing visitors to celebrate and learn at its beautiful new campus. It has now become a true destination for programming and events.*

*Watson's started with a bang, hosting a cocktail event for the Board of Trustees, members, local friends and clients. Over the years we have had many wonderful occasions to celebrate at Greenwich Historical Society. I am so sad that COVID-19 forced Watson's Catering to close permanently. Greenwich Historical Society is a special place to reflect on the past, the present and the future. I will miss it.*

Susan Watson Scully has been a longtime friend and partner to the Greenwich Historical Society. We are thrilled to be able to honor her contribution to our organization — and to the Greenwich entertaining community.



**Susan Watson Scully**





# CHARLOTTE BARNES

Collection Studio Design







## Letter from the Executive Director and CEO

**Debra Mecky**

Dear Members and Friends,

In this unprecedented year of pandemics and protests, I am reminded that our understanding of history grounds and steadies us. Whether we are Republicans, Democrats or undecided, whether we stand or kneel during the singing of the National Anthem, we share a responsibility to learn from the past and to make the future a better place for all. As our mission states, we preserve and interpret Greenwich history to strengthen the community's connection to our past, to each other and to our future. As we look forward in the coming year to recognizing the Historical Society's 90th anniversary, we have committed to listen more deeply with open minds and to partner with our community to learn from each other.

Even with the challenges presented by the coronavirus in 2020, the Historical Society staff pivoted to prioritize community needs. Stories from the archives and exhibitions brought the collections to life. School tours of Bush-Holley House were recreated as a series of first-person videos that were sent directly to teachers who were scrambling to engage their students. Parents were invited to share historic recipes and crafts with homebound children. We hosted our first Story Barn and lectures on Zoom. We offered a new Landscape and Garden tour of the Bush-Holley site and Cos Cob Landing; offered a modified, outdoor version of summer camp and began our first series of lawn concerts. We educated, preserved, interpreted, documented and connected to serve this unique community; we just had to do it differently and acquire the skills to do it.

In 2019 the Historical Society's education staff partnered with the "Witness Stones Project" and Sacred Heart School to launch the first in a series of projects that will eventually extend to other schools in Greenwich. The Witness Stone Project seeks to restore the history and honor the humanity and contributions of the enslaved individuals who helped build our communities. Sacred Heart students researched the lives of Candice and Cull Bush and will join us again in the spring of 2021 to place memorial stones near the Bush-Holley House slave quarters.

A jury of historic sites experts from both inside and outside the National Trust for Historic Preservation unanimously selected the Greenwich Historical Society for its highest honor, the 2020 Trustees Emeritus Award for Historic Site Stewardship. Presented at the annual meeting in October 2020, the Trust noted the breadth and quality of the preservation projects that have been completed to steward and interpret our historic buildings and landscape as well as our straightforward and thoughtful approach to telling the stories of people who were enslaved on the property.

For now I take this opportunity to thank you--our members, donors, friends and volunteers—for your resilience, sense of humor, wisdom and respect—and invite you to join us in our commitment to listening, learning and leading as we venture into another year together.

A handwritten signature in black ink that reads "Debra Mecky".

Debra Mecky

The Debra L. Mecky Executive Director & CEO

October 2020



# Acknowledgments

## Presenting Sponsors

---



DOUGLAS VANDERHORN  
ARCHITECTS



The Ashforth Company

## Gold Sponsors

---



John Paolini and Tim Guitteau



Tamar Lauri and Jen Danzi

## Silver Sponsor

---

Charlotte Barnes Interior Design and Decoration LLC

## Bronze Sponsors

---

The Gussie  
Cummings & Lockwood

## Friends

---

Black Forest Bakery  
Bob Capazzo Photography  
Cap Cork & Cellar  
Diane James Home  
InCollect  
Maison Haven  
McArdles Florist  
Quintessence  
Rebeccas  
Sebass Events & Entertainment

## Antiquarius Co Chairs

---

Suzanne Frank  
Heather Georges  
Catherine Tompkins

## Antiquarius Committee

---

Charlotte Barnes  
Holly Cassin  
Alexandra Cummiskey  
Haley Rockwell Elmlinger  
Heather Georges  
Robert Getz  
Barbara MacDonald  
Debra Mecky  
Anne Ogilvy  
Heather Sargent  
Patrick Mele  
Alease Fisher TallmanRebeccas  
Sebass Events & Entertainment



# Patrons

## Antiquarius Patrons

The Ashforth Company  
Donya Bommer  
Bridgepoint Risk Management  
Holly and Matt Cassin  
Charlotte Barnes Interior Design  
Katherine and James Clark  
Lynn Clarke  
Coldwell Banker Realty  
Carol Crapple  
Cummings & Lockwood, LLC  
Alexandra and Peter Cummiskey  
Cummings & Lockwood, LLC  
Diane James Home, Inc.  
DKB Interiors, LLC  
Douglas VanderHorn Architects  
Elysia and Jonathan Doyle  
Haley and Joseph Elmlinger  
Patti and Eric Fast  
Suzanne and Ramsey Frank  
Ellen and Michael Funck  
Heather and Andrew Georges  
Jeanine and Robert Getz  
The Gussie  
Kyu Han and Heinz Maeusli  
Ren and Spencer Harman  
Melissa and Carney Hawks  
Susannah and Jim Heyworth  
Elizabeth and George Hopley  
Stephanie Kruse  
Elizabeth and Douglas Lake  
Susan and Jim Larkin  
Sally and Larry Lawrence  
Susan Lehman  
Cricket and James Lockhart  
Susan Lynch  
Barbara MacDonald  
Isabel and Peter Malkin  
Debra and Carl Mecky  
Mimi and John Henry Moulton  
Anne and Chuck Niemeth  
Anne Ogilvy

Dave and Lindsay Ormsby  
Emma and Mark Pennington  
Natalie Pray  
Ashley and Robert Reid  
Ellen and John Reid  
Margie Walker and Trey Reynolds  
Debbie and Russ Reynolds  
Jordan and Noah Rhodes  
Deb and Perry Robinson  
Leigh Ann and Robert Ryan  
Irene Shaw  
Toland and Robert Sherriff  
Katie and Jonathan Simon  
Carter and Talbott Simonds  
Alma Rutgers and Don Snyder  
Davidde and Ron Strackbein  
Alease and Paul Tallman  
Catherine and David Tompkins  
Marree and John Townsend  
Lynne Wheat  
Martha and Charles Zoubek

\* List in Formation, as of October 29, 2020



Holiday postcard from Holley/MacRae Family Papers, postmarked December 25, 1912 and addressed to the MacRae twins. Greenwich Historical Society Collection.



# Calendar of Events

## Gingerbread House Kits

PICKUP: DECEMBER 2-4, 2020

Decorating a home has never been more tasty. Take your creativity to a new level with our Gingerbread house kit presented by Greenwich's own Black Forest Bakery. Kits will be available for pick up at the Greenwich Historical Society and will include all the basics. Submit pictures of your creations so that we can celebrate your design skills with the Antiquarius community!



## Festival of Tabletop Trees

NOVEMBER 19 – DECEMBER 6, 2020

Our second annual Festival of Tabletop Trees celebrates the talents of local retailers, organizations, and designers who help us make our homes festive sanctuaries during the holiday season. View, purchase or bid on a tree via online auction. Trees will be on display in our airy, award-winning new museum lobby, free for visitors to peruse safely throughout the day.

## Candlelit Evening Tours of the Bush-Holley House

DECEMBER 2 – 4, 2020 from 4 – 7PM

Enjoy our c.1730 Bush Holley House decorated for the holidays. This year, we will offer small docent-led tours for our patrons to enjoy this much anticipated festive tradition. The museum will be open to guests for shopping while enjoying refreshments and treats.

*\*Pre-registration required, space is limited.*



## Dine-Around Lunch

Following long-standing Antiquarius tradition, join your friends for a festive lunch on the day of the House tour. Select Greenwich restaurants will offer special treats for Antiquarius ticket holders.

## Virtual House Tours

DECEMBER 3, 2020

*Presented by Quintessence*

Enjoy exclusive access to virtually tour three homes at your leisure with designers Patrick Mele, Charlotte Barnes and Heather Georges. Experience their creative inspiration, incorporating old and new, and thoughts about creating spaces for gathering together at home during the holidays.



## Entertaining Workshop with Eddie Ross & Susan Scully

DECEMBER 2, 2020 at 6:30PM

Presented via Zoom, join entertaining gurus Eddie Ross and Susan Scully in a lively conversation about entertaining in the “new normal”! From perfect cocktails, flowers and tablescapes to safely-presented buffets and clever gift wrapping, these seasoned pros will regale us with clever tips, insights and stories from years of entertaining in Greenwich.

*Patrons will receive an Eddie Ross inspired flower arrangement delivered on Friday, December 4th.*



## Greenwich Winter Antiques & Design Show

DECEMBER 2–6, 2020

*Patrons early access Dec 1; Presented by Incollect.com*

Enjoy a virtual take on our annual **Antiquarius Winter Antiques and Design Show**. Incollect.com will present 40+ exclusive dealers offering a vibrant online collection of antiques and modern furniture, fine art and jewelry.

[incollect.com/antiquarius-show](https://incollect.com/antiquarius-show)



## Designer Panel

DECEMBER 4, 2020 at 11AM

*Presented by Douglas VanderHorn Architects*

Presented live via Zoom: D.J. Carey of *Connecticut Cottages & Gardens* magazine, moderates an engaging discussion with architect Douglas VanderHorn, landscape designer James Doyle and interior designer Amy Aidinis Hirsch. The designers will discuss working with historic interiors as well as incorporating all the best of the old and the new into distinguished Greenwich homes.

## Virtual Holiday Boutique

NOVEMBER 27 –  
DECEMBER 6, 2020

Each year Antiquarius presents an exciting holiday shopping experience for both patrons and the public to benefit the Greenwich Historical Society. This year we’ve collaborated with a curated selection of vendors and our favorite local retail partners to help kick-start your holiday shopping online.



## Catered Dinner Party: Together at Home

DECEMBER 4, 2020

*Catered by Rebeccas*

Toast to another successful year of Antiquarius and to a hopeful view to the year ahead with a festive meal at home. Patrons (\$1,000+) will enjoy a catered dinner with wine delivered by Rebeccas restaurant of Greenwich.



# Design Co-Chairs

Greenwich Historical Society and Antiquarius are delighted to welcome Charlotte Barnes, Heather Georges and Patrick Mele as this year's Design Co-Chairs.



**Charlotte Barnes**

Award-winning interior design, rooted in spaces that are classic, yet clean and modern, Charlotte Barnes' aesthetic is grounded in a stylistic mélange of luxurious materials — an eclectic mix of the contemporary and antique with attention to detail and a measured restraint.

Known for creating elegant, warm and intimate spaces, Charlotte was honored with an Innovation in Design Award and inducted into the New England Design Hall of Fame in 2015. Her work has been featured in publications at home and abroad including *British House & Garden*, *Elle Decor*, *US House & Garden*, *CT Cottages & Gardens*, *New England Home* and *New American Luxury*.

An early career in fashion, at Ralph Lauren Womenswear in New York and London and Pomellato USA, Charlotte honed her appreciation for interior design and visual decoration while living abroad. When her own London home was published in *British House & Garden* in 1995, Charlotte Barnes Interior Design & Decoration, LLC was born.

From refined city apartments to residential and commercial spaces in England, Spain, Turkey, Colorado, New York, Connecticut, Florida and The Adirondacks, Charlotte Barnes' work includes projects in East Hampton, London, New York City, Greenwich, Nantucket, Watch Hill, Newport, Martha's Vineyard, Istanbul, Palm Beach and John's Island.





**Patrick Mele**

Recognized by *Architectural Digest*, *Vogue*, *Departures* and *New York Magazine* for his unique approach to the worlds of decoration and design, Patrick Mele culls the best from the past and present in an effort to create environments that feel timeless. With a passion for wide ranging style, Patrick cultivates dynamic rooms that tell a layered story based on their architecture, location and the people inhabiting them.

With a degree in Art History and Cultural Studies from New York University's Gallatin School, his aesthetic has been informed by the evolution and interplay between art, architecture, decorative-arts and fashion throughout history.

Established in 2011, Patrick's namesake firm has worked on projects in a variety of locations including New York, Connecticut, Washington D.C, London and St. Barths.

Patrick's professional experience includes some of America's most iconic retail brands, such as: Ralph Lauren, Kate Spade, Bond No. 9., Schumacher, and David Yurman.



**Heather Georges**

Heather Hoyt Georges is a collector by nature. It was working at the Museum of Fine Arts Boston that she began scouring antiques shops and local auction houses in search of unusual finds. With a Masters in Decorative Arts History, she left the museum world and operated her own decorating firm in New York City. After closing her office to devote time to her three children, she continued to pursue her interests in the decorative arts through travel. It was while traveling that she discovered many small and often bespoke lines of linens, ceramics and glassware. She loves discovering new things, and working with artisans to bring their craft to a larger community. By creating Heather Hoyt Georges, A Curated Collection for the Table, she joins her love of collecting, interest in decorative arts, entertaining, travel and collaborating with craftsmen to form a unique point of view. The items in her collection are made in limited quantities and by hand. She lives in Greenwich, CT with her husband and three children.



### **Eddie Ross**

Eddie Ross is the Co-founder and Chief Content Creator of Maximalist Studios, specializing in environmental photography for the home design and consumer products industries. He has worked as a design, decorating and food editor for *Better Homes & Gardens*, *Food Network*, *Martha Stewart Living* and *House Beautiful*.

Recognized by design aficionados for his inventive, out-of-the-box approach to decorating and entertaining, Eddie consistently re-imagines the aesthetic possibilities in secondhand finds, imbuing them with a chic and colorful sophistication within everyone's reach. His sold-out tours of antique markets across the country have empowered devoted followers to find the best things they can and, at the same time, to give new life to what they may already own.

A trained chef from the Culinary Institute of America, Eddie has styled parties and table settings featured in *House Beautiful*, *Southern Living* and *InStyle*. His design work has been published in *Domino*, *Vanity Fair*, *Country Living* and *The New York Times*. He has also appeared in Bravo's interior design competition series *Top Design* and entertaining specials for HGTV.

Eddie lectures widely on the living arts, from food and flowers, to gardening, decorating and entertaining. His first book, entitled *Modern Mix: Curating Personal Style with Chic & Accessible Finds*, was published by Gibbs Smith in September 2015.

### **Susan Scully**





diane@dkb-interiors.com  
www.dkb-interiors.com



# DIANE JAMES HOME

FAUX FLORAL COUTURE - HANDMADE IN THE USA

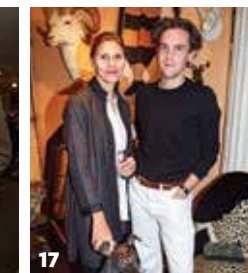


SHOP DIANE JAMES HOME AND WE WILL DONATE 15% OF YOUR ORDER TO GREENWICH HISTORICAL SOCIETY  
USE CODE GHS IN SHOPPING CART  
WWW.DIANEJAMESHOME.COM



# A Look Back: Images from Last Year's Antiquarius Events

## The 2019 Greenwich Antiques Show Opening Night with Bronson VanWyck



**1.** Davidde and Ron Strackbein Russ and Debbie Reynolds; **2.** Eric and Patti Fast and Peter Malki; **3.** Bruce and Helen Dixon, Jonathan Simon and Lindsay Ormsby; **4.** Joyce and Fred Fowler; **5.** Abby Ritman, Holly Cassin, Catherine Tompkins, Leason Cercy and Anne Ogilvy; **6.** Anna Greco, Daniel Suozzo, Mary Vinton, Bronson Van Wyck, Cai Pandolfino, Debra Mecky and Christopher Shields; **7.** Jim and Cricket Lockhart; **8.** Michael Kovner, Deborah Royce, Jean Doyen de Montailou; **9.** Ulrik Trampe, Julia Grayson, Alease Fisher Tallman and Paul Tallman; **10.** Bea Crumbine and Fred Camillo; **11.** Carolyn and Douglas Stevens and Valerie Stauffer; **12.** Matt McLennan, Carter Simonds, Erin Bingle, Bronson Van Wyck and Melanie McLennan; **13.** Kelly Corroon and Mimi Moulton; **14.** Anne Ogilvy, Bronson Van Wyck and Julia Grayson; **15.** Doug and Maria VanderHorn; **16.** John and Diane Desrosier and Katie and Jonathan Simon; **17.** Cheryl Skoog Tagne and Patrick Mele.



## The 2019 Holiday Boutique



**1.** Tatiana Berman, Christina Schwefel and Dana Hammack; **2.** Leigh Ann Ryan, Lindsey Doramus and Courtney Kennedy; **3.** Carrie Emery, Holly Cassin and Hope Bertrand; **4.** Sara Cusimano and Catherine Tompkins; **5.** Wendy Fahey, Mari Lunden and Yvonne Burke; **6.** Katy Finnell and Lane Reardo; **7.** Judy Collins, Charlotte Poler and Leason Cercy; **8.** Charlotte Poler, Andrea Detterich, Robert Getz and Anne Ogilvy; **9.** Sarah Saeli; **10.** Victoria Triplett, Wendy Stapleton and Natalie Kilts; **11.** Holli Cutting and Susan Sleeper; **12.** Jordan Rhodes, Erin Glasebrook and Amanda Wilson; **13.** Kyle MacDougall and Courtney Gardiner; **14.** Roxanne Vanderbilt and Haley Elmlinger; **15.** Magali Swanson and Megan Sullivan; **16.** Amy Hornyak and Sarah Janette.

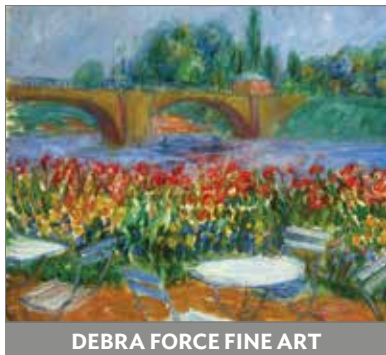


# incollect

The World's Finest Dealers



DE ANGELIS



DEBRA FORCE FINE ART



LILLIAN NASSAU



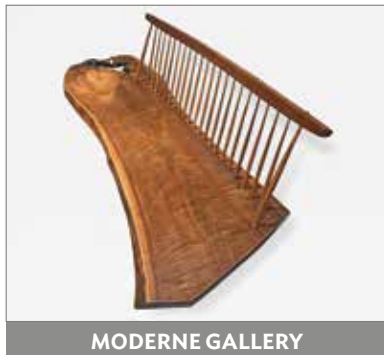
ELLIOTT & GRACE SNYDER



KELLY KINZLE



GASPRE ASARO



MODERNE GALLERY



HIRSCHL & ADLER



PEACOCK'S FINEST



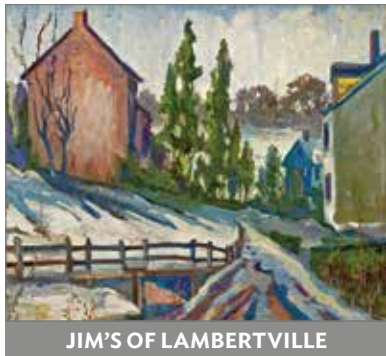
MACKLOWE GALLERY



H. GALLERY



L.A. STUDIO



JIM'S OF LAMBERTVILLE



EVERGREEN ANTIQUES



CHARLES CLARK



JEFFREY TILLOU ANTIQUES



IMPERIAL FINE BOOKS



KENTSHIRE



OENO GALLERY



ACROTERION

SHOP THE FINEST PERIOD DESIGN, ART & JEWELRY





# BETTERIDGE

EST 1897



When the answer means the world.

239 GREENWICH AVENUE | GREENWICH | 203.869.0124

[betteridge.com](http://betteridge.com)





# THE ANTIQUARIUS HOLIDAY BOUTIQUE

*Goes Virtual — November 27 – December 6*

This year, instead of sipping champagne cocktails to toast this annual kick-off to Antiquarius season, we are happy to announce the 2020 Virtual Holiday Boutique! Cozy up and shop from home as we present a curated selection of vendors and local retail partners to jump-start your holiday shopping. Thanks to all of our shoppers and vendors who generously support the Historical Society's education programs during this special holiday shopping event.



Hopscotch



1



2



3



4



5



6



7



8



9



10

1. Soundview Millworks; 2. Back 40 Mercantile; 3. Kiki Bean & BedHead; 4. Courtney's Kitchen; 5. KVO Collection; 6. Designs by Georgina; 7. Adler Grier; 8. Pinky of Greenwich; 9. LILIBRIDGE; 10. Pomeline Jewelry.

The boutique is open to the public online at  
[GreenwichHistory.org/Holiday-Boutique](https://GreenwichHistory.org/Holiday-Boutique)

*15% of all proceeds are generously donated back to the Historical Society by vendors.*



MacJac



Marcia Selden



Vanderbilt Gallery

## BOUTIQUE VENDORS

### **Adler Grier**

[www.adlergrier.com](http://www.adlergrier.com)

*Handcrafted quality jewelry that is classic and affordable*

### **Back 40 Mercantile**

[www.back40mercantile.com](http://www.back40mercantile.com)

*Apparel, jewelry, baby, home, entertaining, bath/body and more*

### **Brooks Works Studios**

[www.brooksworksstudio.com](http://www.brooksworksstudio.com)

*Tray Chic – art for your tabletop. Unique and durable assortment of serving trays and kitchen cutting boards featuring contemporary artwork.*

### **Courtney's Kitchen**

[www.courtneyskitchen.com](http://www.courtneyskitchen.com)

*Delicious meals, snacks and healthy foods to go, featuring Clean Weeks to help clients feel and look their best.*

### **DeoDupont Jewelry**

[www.deodupont.com](http://www.deodupont.com)

*Beautiful and unique jewelry inspired by people who love life and color.*

### **Designs by Georgina**

[www.designsbygeorgina.com](http://www.designsbygeorgina.com)

*Fine jewelry – traditional with a fashion twist incorporating Australian crystals, Tahitian and freshwater pearls.*

### **Greenwich Historical Society Museum Store**

[www.greenwichhistory.org](http://www.greenwichhistory.org)

*Interesting gifts for curious minds, gracious hosts and Greenwich-philes*

### **Hopscotch**

[www.hopscotchathome.com](http://www.hopscotchathome.com)

*Baby and children's pajamas, apparel and gifts.*

### **Kiki Bean & BedHead**

[www.Kiki-bean.myshopify.com](http://www.Kiki-bean.myshopify.com)

*Loungewear and sleepwear for women and children. Faux fur blankets, fashion jewelry and everything cozy.*

### **KVO Collection**

[www.kvocollections.com](http://www.kvocollections.com)

*Diamond jewelry collection of classic styles with a contemporary twist.*

### **LILIBRIDGE**

[www.lilibridge.com](http://www.lilibridge.com)

*100% natural cotton bags & clutches with island inspired artwork designed by Vanessa Douglas*

### **MacJac**

[www.macjacllc.com](http://www.macjacllc.com)

*Needlepoint and tapestry pillows/stockings, dog ornaments, towels, rainwear, purses, nightshirts and jewelry.*

### **Marcia Selden**

[www.marciaselden.com](http://www.marciaselden.com)

*Festive gift boxes for holiday giving and treats from award-winning tastemaker & caterer*

### **Pinky of Greenwich**

[www.pinkyofgreenwich.com](http://www.pinkyofgreenwich.com)

*Women's apparel and accessories*

### **Pomeline Jewelry**

[www.pomelinejewelry.com](http://www.pomelinejewelry.com)

*Jewelry and gemstones, baroque pearls, gold vermeil plating and sterling silver and a collection of steel, gold and pearls.*

### **Soundview Millworks**

[www.soundviewmillworks.com](http://www.soundviewmillworks.com)

*Personalized cutting and serving boards.*

### **Too Sparrows**

[www.toosparrows.com](http://www.toosparrows.com)

*Thoughtfully curated women's fashion and accessories*

### **Vanderbilt Gallery**

[www.vanderbiltgallery.com](http://www.vanderbiltgallery.com)

*Accessories and jewelry from around the world*





**Coffee Bar** [cold brew & kombucha on tap]

**Breakfast & Lunch** [sandwiches, salads, soups]

**Baked Goods** [muffins, cookies, scones, brownies]

**Prepared Food** [ala cart, entrees, salads, & sides]

**SupperClub** [daily menus for pick up or drop off]

**Fresh Flowers** [... and seasonal decorations]

**Catering** [everyday & holiday celebrations, soup2nuts]

**Market** [all your everyday necessities and more]

[www.happinessiscatering.com](http://www.happinessiscatering.com)

**HAPPINESS IS**

Back Country Market  
1067 North Street Greenwich  
203-861-4020

**Visit & Shop**

in person  
or online..

**order ahead**

for

**quick pick up**

in market or

@thecurb.



**order**

102 Bruce Park Ave  
Greenwich, CT 06830

FREE Local Delivery  
203.489.3448



**CAP, CORK & CELLAR**

**DRINKS AND PROVISIONS**

Fine Wine, Craft Beer, Spirits, Artisanal Cheese & Accessories

# DELIGHTED TO JOIN THE PARTY!

ONTHEMARC is honored to be selected  
as a Preferred Caterer at Greenwich Historical Society.



## PARTYING AT HOME WITH YOUR POD?

Check out CRAVE, a series of at-home meal concepts designed  
by ONTHEMARC to satisfy all of your at-home delivery needs.

[onthemarcevents.com](http://onthemarcevents.com) | (203) 274-6808 | [info@onthemarcevents.com](mailto:info@onthemarcevents.com)

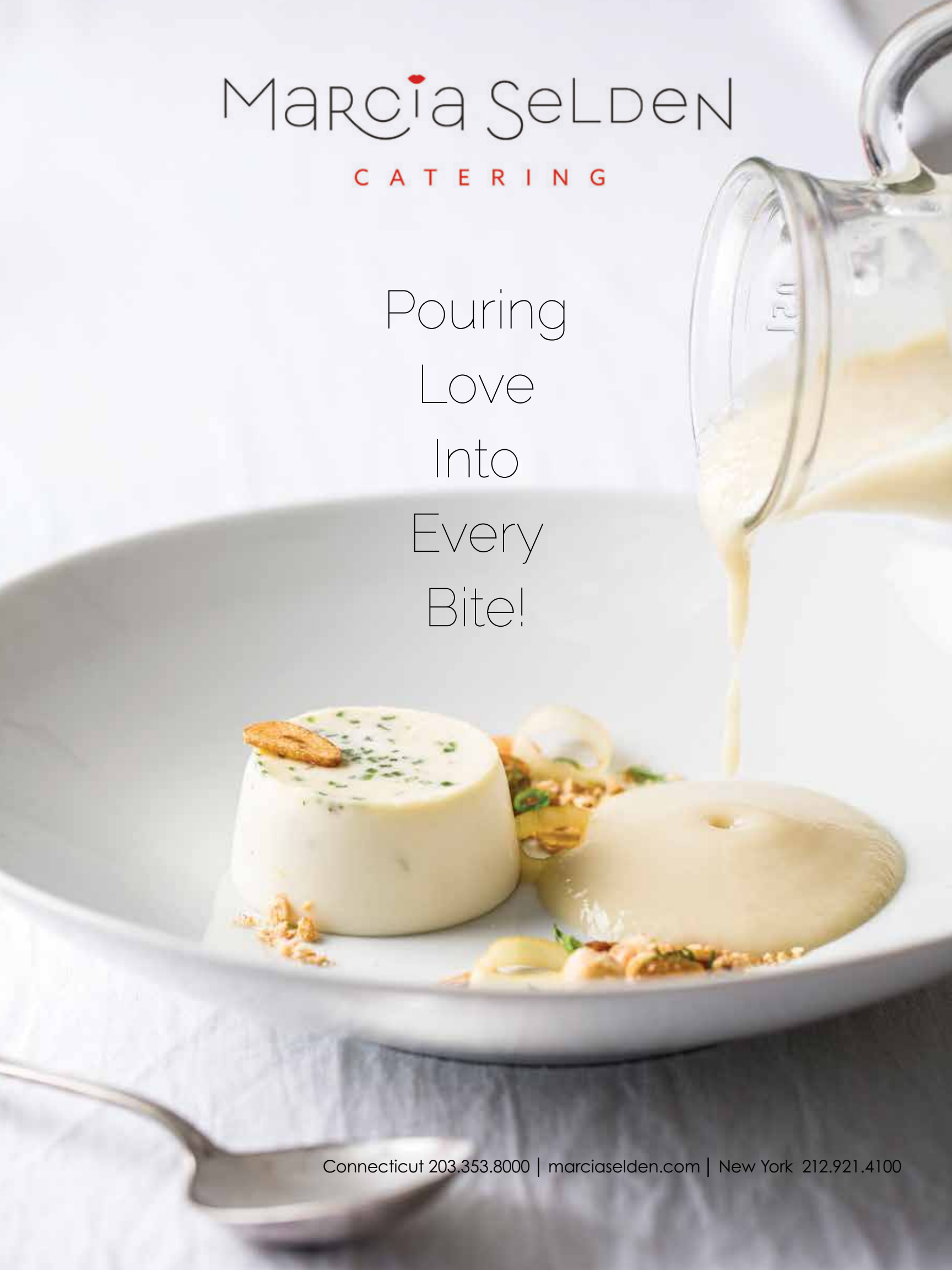




# Marcia Selden

CATERING

Pouring  
Love  
Into  
Every  
Bite!



Connecticut 203.353.8000 | [marciaselden.com](http://marciaselden.com) | New York 212.921.4100



THIS YEAR,  
WE COULD ALL USE A LITTLE EXTRA

# Merry & Bright



WINTER CONTAINER GARDENS  
CUSTOM WREATH DESIGN  
GARLANDS & GREENS  
PINECONES & BERRIES  
ORNAMENTS & LIGHTS  
RIBBONS & BOWS

HAND-DELIVERED GIFTS  
FLOWER ARRANGEMENTS  
CUSTOM FLOWER BUNCHES  
TABLESCAPE STYLING SERVICE  
INDOOR PLANTED DESIGNS



McArdles.com

• 48 Arch Street, Greenwich •

(203) 661-5600



BEST IN GOURMET

[www.bestingourmet.com](http://www.bestingourmet.com)





# *We're still celebrating.*



greenwich  
historical society

For intimate events in the barn, tented fêtes on the Great Lawn, and corporate gatherings in the museum, the Historical Society's award-winning campus is a beautiful, interesting and safe venue to celebrate and enjoy throughout the year.

## **Social Gatherings at the Greenwich Historical Society**

Daniel Suozzo, Events Manager — 203.869.6899 — [events@greenwichhistory.org](mailto:events@greenwichhistory.org)





  
**AMY AIDINIS HIRSCH**  
 INTERIOR DESIGN

amyhirsch.com ■ 203 661 1266



**SEBASS**  
EVENTS & ENTERTAINMENT

*Celebrate*

**SAFE & SOCIAL**



**SEBASSEVENTS.COM (203) 542-0640**

**f i p /SEBASSEVENTS**





## Holiday Entertaining

Serve these cocktails at your holiday party and ease your hosting-related stress.

### Cherry Bourbon Old Fashioned

In a cocktail shaker muddle 2 thawed frozen cherries, 2 dashes of angostura and orange bitters, one tablespoon of fresh orange juice and 2 ounces of your favorite bourbon.

Stir well and pour into ice filled old fashioned glass. Garnish with orange slice — *delicious!* Can also be made with brandy.

### White Orchid

1½ oz citrus flavored vodka

½ oz Domaine de Canton

2 oz of white cranberry juice

In a cocktail shaker filled with ice, add the citrus vodka, Domaine de Canton and white cranberry juice. Shake well, strain into a martini glass, garnish with an edible orchid. *Enjoy!*





A brand-new weekly podcast for design junkies from



Experienced Interior Designers and entrepreneurs, Pamela Frisoli and Susannah Heyworth of Trovare Home debate both design and life, feature industry guests, talk vintage finds, and share their escapades in the world of interiors.

Episodes available on Apple Podcasts, Spotify and Youtube.

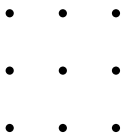
[thegussie.com](http://thegussie.com) | [trovarehomedesign.com](http://trovarehomedesign.com)

245 EAST PUTNAM AVENUE, GREENWICH, CT | 203.869.5512

Stop by Trovare Home December 3<sup>rd</sup> to 5<sup>th</sup> for some holiday shopping and 10% of all purchases will go directly to Antiquarius.



# Discover the Most Exquisite Homes in Greenwich, CT



207-209 Long Neck Point | \$11,000,000 | 5 Beds 8.1 Baths



74 Upper Cross Rd | \$7,750,000 | 7 Beds 7.3 Baths



Compass Connecticut, LLC is a licensed real estate broker and abides by Equal Housing Opportunity laws. All material presented herein is intended for informational purposes only. Information is compiled from sources deemed reliable but is subject to errors, omissions, changes in price, condition, sale, or withdrawal without notice. No statement is made as to the accuracy of any description. All measurements and square footages are approximate. This is not intended to solicit property already listed. Nothing herein shall be construed as legal, accounting or other professional advice outside the realm of real estate brokerage.

COMPASS



Yashmin Lloyds  
917.597.0178  
ylloyds@compass.com









# PATRICK MELE



COME VISIT US!

60 William Street Greenwich CT 06830 (203) 570-3284

Wednesday - Saturday | 11-5 or by appointment | [@patrickmele](#) [@shoppatrickmele](#)





# CLASSIC GREENWICH HOUSES

CHARLES HILTON ARCHITECTS

THE MONACELLI PRESS

200 STUNNING IMAGES OF ELEGANT INTERIORS, REFINED EXTERIORS, & PICTURESQUE LANDSCAPES, CLASSIC GREENWICH HOUSES IS AN IDEAL RESOURCE FOR ADMIRERS OF CLASSIC RESIDENTIAL DESIGN.

AVAILABLE IN FINE LOCAL BOOKSTORES OR ON AMAZON.COM

WWW.HILTONARCHITECTS.COM | 203.489.3800 | :@CHARLESHILTONARCHITECTS



## Design Panel

Greenwich Historical Society and Antiquarius are delighted to welcome Charlotte Barnes, Heather Georges and Patrick Mele as this year's Design Co-Chairs.



**Moderator DJ Carey**

DJ Carey is the Editorial Director at *Cottages & Gardens*. She is “the” resource for all things design in the area, with a keen sense of style, a deep respect for the arts, and abiding commitment to the design community. She has been recognized for her contributions to the design world — as editor and especially as a friend and advocate to a diverse community of professional designers, artists, and suppliers. Her distinguished career in publishing, including work with several national magazines, includes her leadership of *C&G*, where she has also launched and founded *Connecticut Cottages & Gardens*.



**Douglas VanderHorn**

Douglas VanderHorn Architects is an architecture firm specializing in residential design within a diverse and distinguishing collection of styles. With an accomplished career spanning over three decades, Douglas VanderHorn creates transformational alterations and distinguished new homes by focusing on the goals and inspirations of each individual client. Founded on careful analysis and excellent planning, each design incorporates innovative building technologies, modern conveniences, and tailor-made features into architectural solutions which are elegant, imaginative, and captivating.

Douglas VanderHorn Architects comprises highly dedicated associates with specialties ranging from Classical architecture and historic preservation, to building science and sustainable design. In addition to in-house staff, the firm maintains a network of talented landscape architects, interior decorators, engineers, specialized consultants, contractors, craftsmen and artisans whose experience is called upon as required for each project.

While the firm has been involved with over 150 successful projects in various parts of the country, Douglas VanderHorn Architects continues to focus on opportunities to craft beautiful traditional residences in Connecticut and New York.



**Amy Aidinis Hirsch**

Since founding her eponymous firm in 2006, Greenwich, Connecticut, native Amy Aidinis Hirsch has been creating one-of-a-kind homes for the most discerning clientele. With expert skills in all aspects of interior design and a unique proven process, her thoughtful design solutions have landed her projects across the country — spanning Montana, Wyoming, Colorado, the Bahamas, Martha’s Vineyard, Manhattan and Connecticut. No matter the locale, she has left a luxurious, yet livable and indelible mark on the homes she’s crafted with each client’s individual lifestyle in mind. Accomplished in both traditional and modern styles, her creative designs are filled with details that are unexpected — regardless of the size and scope of the project. Amy Aidinis Hirsch Interiors handles projects from ideation phase, through construction and project management, to finalizing finishing touches. With quality, innovation and unparalleled execution, this Greenwich, Connecticut boutique firm delivers with meticulous and uncompromising attention to detail, service and style.



**James Doyle**

James Doyle Design Associates has a clear vision — to create beautiful and innovative landscapes that deliver world class designs whilst enriching the lives of the people who use these outdoor spaces.

We are as inspired by the future as we have been by the past. As we move forward, we strive to create beautiful and sustainable solutions which blend a unique sense of place with a thorough knowledge of the principles and practices of landscape architecture today.

We are always inspired by the land we work on, care about how our clients want to live, and what really matters to them. We believe that full collaboration with our clients and all affiliated professionals is fundamental to the success of our projects. We are passionate about design and we are known for our consistent, innovative and sustainable designs and our unwavering attention to detail in crafting. We are innovators with a sensitivity to our changing world.

Our work reflects the intersection of nature and art; the juxtaposition of the designed and the natural; with bold, contemporary, dynamic gestures in the form of structural plant material, innovative hardscaping and an infusion of landscape art. We care about the world we live in and our landscapes have the power to become our sanctuaries, to be uplifting, relaxing and thought provoking, with an appreciation for nature.



A NEW LOOK. A NEW BRAND.  
ALWAYS INSPIRED LANDSCAPE DESIGN.



JAMES DOYLE DESIGN ASSOCIATES  
INTERSECTION OF NATURE AND ART

203 869 2900 \ JDDA.COM





# David Scott Parker Architects

170 Pequot Avenue • Southport, CT 06890  
(203) 259 - 3373 • [dsparker.com](http://dsparker.com)

© Durston Saylor Photography



## GREENWICH HISTORICAL SOCIETY MUSEUM STORE

# Your Perfect Source for Holiday and Hostess Gifts



**O**ur beautiful new Museum Store is open daily and offers distinctive items for all ages inspired by the art and gardens of Bush-Holley House, plus Greenwich-themed merchandise.

**Give a gift that lasts all year:** An annual Greenwich Historical Society membership begins at \$50 and includes free admission, exclusive members-only events, and discounts in our Museum Store and Café.

**Greenwich**  
historical society

[greenwichhistory.org](http://greenwichhistory.org)

# ANTIQUARIUS

2ND ANNUAL

## FESTIVAL OF TABLETOP TREES



BENEFITING THE GREENWICH HISTORICAL SOCIETY

**NOVEMBER 19TH THROUGH  
SUNDAY, DECEMBER 6TH**

### ONLINE LIVE AUCTION

This holiday tradition transforms the Historical Society lobby into a festive wonderland, featuring community-crafted trees by local designers, merchants, nonprofit organizations and garden clubs.

**Trees will be on display at the Historical Society:**

Monday – Friday 9 am – 5 pm    Weekends 12 pm – 4 pm

Special Viewing Thursday, December 3 until 7:30 pm

Online auction at [www.greenwichhistory.org](http://www.greenwichhistory.org)

**BID ON ONE-OF-A-KIND CREATIONS FROM THESE GENEROUS  
SUPPORTERS FOR YOUR HOME HOLIDAY THIS SEASON:**

Bruce Museum Gift Shop  
Dogwood Books & Gifts  
The Drawing Room  
Garden Club of Old Greenwich  
Girl Scouts of Greenwich  
Green Fingers Garden Club  
Greenwich Botanical Center  
Greenwich Historical Society Museum Store  
Greenwich Library  
Beth Krupa Interiors  
Little Bo Chic

McArdle's Florist & Garden Center  
Open Arts Alliance  
The Rummage Room  
Salon 221  
Sam Bridge Nursery & Greenhouses  
Something Special Florist  
Sophia's of Greenwich  
Tiger Lily's  
Greenwich Community Gardens  
Greenwich Exchange for Women  
Greenwich Garden Club



# Holiday Tours at the Bush-Holley House



While we'll miss our annual Candlelight Holiday Event, we are committed to offering festive tours of our c.1730 Bush-Holley House during the month of December. Period decoration, including special holiday items from our collections will be on display on these small, docent led tours. All tours require advanced registration at [www.grenwichhistory.org](http://www.grenwichhistory.org). Regular scheduled tours are available at 12:30 and 2:30pm on weekends, and special tours may be arranged by calling 203.869.6899.

**Antiquarius ticket holders are welcome to enjoy dramatic evening tours December 2-4. Space is limited and reservations are required.**







MAISON HAVEN  
LUXE ORGANIZERS

## HIT THE RESET BUTTON

We believe everyone deserves a place to recharge, retreat and relax. Organize the Maison Haven way, with our bespoke in-home service.

Book your consultation now.

[www.maisonhaven.com](http://www.maisonhaven.com)

@maisonhaven



trovare  
HOME DESIGN

### Shop and Share Event to Support Antiquarius - December 3<sup>rd</sup> to 5<sup>th</sup>

Trovare Home is thrilled to be hosting a Shop and Share Event to support the Greenwich Historical Society. Stop by Trovare Home on December 3rd, 4th, or 5th for some holiday shopping and 10% of all purchases will go directly to Antiquarius. Trovare Home offers a fine selection of modern and vintage furnishings. The store's distinctive design style is a blend of new and curated vintage pieces. Throughout the holiday season, Trovare Home will be showcasing a unique assortment of gifts for family and friends.

[trovarehomedesign.com](http://trovarehomedesign.com)

245 EAST PUTNAM AVENUE  
GREENWICH, CT | 203.869.5512

Bob Capazzo Photography  
203-273-0139  
bobcapazzophoto@gmail.com



## Food Design...

**Events Catered Beyond Expectations**

*The possibilities are endless...*



*Executive Chef ~ Michael W. Batt*

**Outstanding Food, Extraordinary Service,  
& Flawless Presentation**

Weddings ~ Social Events ~ Corporate Events ~ Fundraisers  
Private Chef Service ~ Dinner Deliveries ~ Event & Wedding Planning

28 Old Field Point Road, Greenwich, CT 06830 T: 203.622.0725 | F: 203.625.9314  
www.fooddesigncatering.com | eat@fooddesigncatering.com





# A Home for Greenwich History

In times of uncertainty and unrest in our nation, the Greenwich Historical Society continues to shine a light on our past. This year has challenged us to step up, listen carefully and keep moving forward. Settling into our new campus, finding a resonant voice in the Greenwich community and meaningfully serving a broader audience was part of our plan from the start. What we learned along the way is that the opportunity and our responsibility to serve is greater than we imagined.

Our exhibits spoke directly to some of the most salient issues we face today, from 20th century refugees and immigrants finding a place to call home in Greenwich, to our first exhibition on the role of activism, protest and civic engagement by Greenwich women in the national suffrage movement.

The Fairfield Museum and The Connecticut Institute of Refugees and Immigrants, organized the award-winning exhibition, *An American Story – Finding Home in Fairfield County*, in celebration of CIRI's 100th anniversary. Thanks to the Blavatnik Family Foundation and additional support from several other local family foundations and First Republic Bank, we expanded the exhibit to include additional Greenwich stories highlighting the modern immigrant experience.

Our second exhibition *An Unfinished Revolution: The Woman's Suffrage Centennial* opened in the Frank Family Foundation Gallery, sponsored by Northern Trust and a grant from CT Humanities. The exhibit showcased the role Greenwich women played on the national stage in achieving the passage and ratification of the 19th amendment. *An Unfinished Revolution* was presented both on site and as an online exhibition, thanks to the nimble work of curators Kathy Craughwell Varda and Maggie Dimock, and support by a CT Cares grant.

The Greenwich League of Women Voters and the CT Women's Hall of Fame partnered with us on public programs, that included student awards for the League's essay contest in answer to the question, "What if Women Could Not Vote?",





and Dr. Heather Prescott presented a lecture on Women's Suffrage in New England.

The Historical Society offered innovative programs and events for families and children, first through traditional events, and then after COVID19 arrived, by responding rapidly to create online resources and provide for future digitization of our collections.

2,500 adults visited exhibitions or attended education programs last year, while more than a thousand researchers found exactly what they were looking for in our archives.

Programs and events arrived in many formats, from Fall Festival on the beautiful grounds of the Bush-Holley Site, to a walking tour of historic Putnam Cemetery led by Davidde Strackbein and the Greenwich Tree Conservancy. We celebrated garden designer Beatrix Ferrand with the Smith Club and hosted a genealogy workshop in our research library, led by family historian Janeen Bjork. The New-Greenwich Symphony Orchestra Chamber Players, 48th season celebrating women composers.

Visitors to the Historical Society's campus were delighted

by its new museum store and our first Festival of Tabletop Trees organized by dedicated store manager Barbara Johann. Our annual Candlelight event provided a festive evening with family-friendly tours of Bush-Holley House, followed by hot chocolate and a visit from St. Nick.

Antiquarius 2019 ushered in the holiday season in Greenwich, with more than 2,300 people attending the suite of events in support of the Historical Society's education programs, including Opening Night of the Greenwich

Winter Antiques Show, co-chaired by Michel

Kovner and Jordan Rhodes, featuring

Honorary design chair Bronson Van

Wyck. The Holiday Boutique, chaired

by Courtney Gardiner and Kyle

MacDougal, provided a thoughtfully

curated selection of clothing,

jewelry and specialty foods. The

event was capped off with tours of

stunning homes in Greenwich, chaired

by Susannah Heyworth and Ashley

Reid. Bronson Van Wyck joined us again

in the spring for a fascinating, if virtual,

Designer Lecture.

Our education programs continued to expand, as we welcomed children from almost every Greenwich public and private schools for programs featuring our colonial history with Sarah Bush and Her Town, and our role as an art colony





for early American Impressionist painters. Our Art & History Camp, research opportunities, the Witness Stones Project, debates on issues of American History, internships and Scout programming for boy and girls made for a full year of engagement with young learners.

Over 3000 children and families discovered that history and art can be fun and inspiring at our family, school and camp programs last year.

We are committed to expanding free education programs to more underserved children in Greenwich through our Title I School partnerships, thanks to generous endowment gifts

from Roberta and Steve Denning and Barbara and Ray Dalio.

Due to the Pandemic we were forced to close our whole campus for three months from mid-March to mid-June. Like everyone else, the Historical Society staff had to figure out new ways to engage the community and provide educational services to students at our partner schools.

1,100 elementary school students participated in virtual tours of Bush-Holley House, and History from Home, offered a series of online resources and videos that made Greenwich stories from our archives and museum available for the first time.







1,932 visitors walked back in time using our digital portal and over 30,000 visitors explored the many facets of Greenwich history on our web site.

Access to our archives, programs and education resources is broader than ever. In the next three years, under the direction of Curator of Archives Christopher Shields, we are going to build on this work with a new cataloging and digitization project made possible by a \$173,000 grant from the Institute of Museum and Library Services.

The first online catalog of the complete works of American Impressionist artist John Henry Twachtman is under construction and will debut a year from now, to coincide with the opening of our exhibition of his Greenwich Paintings, postponed by one year due to COVID.

While our reach has moved far beyond physical borders, our new campus continues to be recognized, our museums awarded best-in-class status, and we have been afforded — through grants and other large gifts — the opportunity to

expand into new dimensions of service to the community. The Greenwich Historical Society campus, under the direction of architect David Scott Parker, received the nationally-renowned Palladio Award in 2020 for outstanding achievement in traditional design.

We earned our reaccreditation from the American Alliance of Museums, joining only 3% of museums nationally who have received this designation. This accreditation is recognition of our commitment to excellence, accountability, high professional standards and continued institutional improvement.

As champions of local history, it is our responsibility to bear witness to the lives and contributions of all of our residents— past, present and future. We know we cannot tell these stories ourselves. They come from a rich diversity of experience, voices and objects. Embracing a sense of community is core to our ability to meaningfully serve, interpret, preserve and document Greenwich.





## Letter from the Co-Chairs of the Board

Haley Rockwell Elmlinger     Catherine Hopkins

Dear Friends,

In times of uncertainty and unrest in our nation, the essential importance of the Greenwich Historical Society has never been more apparent to us. As we have committed to shine a light on our past, we are reminded that our local history strengthens our community through a shared love of learning, civic commemorations and engaged discussions about our roles and responsibilities to each other and to our future. Here are some of the impactful ways the Greenwich Historical Society served our community this past year.

In the fall of 2019, our exhibition, *An American Story: Finding Home in Fairfield County*, shed light on the experiences of refugees and immigrants who have built new lives in southwestern Connecticut. Our lectures and programs highlighted their creative and civic contributions to our communities and highlighted the work of the Connecticut Institute of Refugees and Immigrants to address the growing refugee crisis in the world today.

The fall exhibition was followed in the winter of 2020 by *An Unfinished Revolution: The Women's Suffrage Centennial*, which illuminated the struggle for women's right to vote and highlighted the not-so-well-known stories of suffragists in Greenwich and voices of the marginalized, including African American women. In response to the museum closing in the spring, we extended the exhibition through November 1 and created an online version on our website to broaden its impact.

We served children and families in our community through our education programs and resources for every public and private school in Greenwich, including those in the Town's most needy neighborhoods, into whose classrooms we sent curators and artists. A significant gift from the Dalio Foundation will make it possible to expand our programs in the town's Title 1 schools, so designated because of the large concentrations of low-income students who receive supplemental funds to assist in meeting student's educational goals.

We were also delighted—though not surprised—when the Greenwich Historical Society received notice of its re-accreditation by the American Alliance of Museums in June. First accredited in 2004, our accreditation means the Historical Society continues to meet national standards and best practices for U.S. Museums and remains a member of a community of institutions that have chosen to hold themselves publicly accountable to excellence. It is the highest stamp of approval earned by only 9% of museums in the nation.

These achievements would not have been possible without the extraordinary contributions made by our dedicated board, our thoughtful committees, our excellent staff and our amazing volunteers, or without the faithful support of our essential members, donors and friends listed in this report.

Additionally, we thank our community for its many partnerships, and we look forward to an eventful year ahead as we look forward to celebrating the 90th Anniversary of the Greenwich Historical Society in 2021!

Haley Rockwell Elmlinger  
Co-Chair of the Board  
September 2020

Catherine Tompkins  
Co-Chair of the Board















BEST WISHES TO  
The Greenwich Historical Society  
and the  
Greenwich Boy Scouts



NATALIE PRAY

*We* are grateful to the Greenwich Historical Society staff for your dedication, creativity and commitment to our mission as we preserve and interpret Greenwich History to strengthen our community's connection to our past, to each other, and to our future.

*With our best wishes  
for the year ahead,*

Haley and Catherine  
and the Greenwich  
Historical Society Board  
of Directors





# Greenwich Treasures

## Gifts to the Archives and the Museum Collection

July 1, 2019 – June 30, 2020

To preserve our past for future generations, the Greenwich Historical Society Archives depends on the assistance of people interested in preserving the unique culture of Greenwich. We acquire, preserve and make available to the public publications and original documents about important aspects of the history of the Town of Greenwich from its founding to the present. These can include original letters, diaries, scrapbooks, minutes, reports and publications such as books, magazines, menus, brochures, flyers and campaign literature

The Museum Collection is comprised of objects that document the material culture of present and former inhabitants of Greenwich and its region. Particular emphasis is given to items connected to the history of Bush-Holley Historic Site or those useful to its interpretation.

Objects include, but are not limited to, items associated with Greenwich people, places or events; fine and decorative arts; and maritime, agricultural, industrial and domestic artifacts that reflect the activities of the Bush family during the New Nation and of members of the Cos Cob art colony.

On behalf of current and future students, researchers and scholars, we would like to express our sincere appreciation to all who have contributed to these collections.



Croix d'officier de la Légion d'honneur awarded posthumously to Col. Raynal Bolling. Gift of Patricia Bolling Harding (by her daughter Diana H. Greene).



Silk fan with hand-painted and embroidered decoration, late 19th to early 20th century. (2019.06.01)

### GIFTS TO THE MUSEUM COLLECTION: 2019-2020

#### Gifts of Clemency Chase Coggins

Woodcraft Indian dress, ca. 1910  
2019.02.01

William Heinrich Funk (1866-1949)  
Portrait of Anya Seton at the age of four, 1908.  
Oil on canvas.  
2019.02.02

Girl's red velvet dress, ca. 1908  
Worn by writer Anya (Ann) Seton while posing for Funk portrait  
2019.02.03

#### Gift of Anne H. Young:

Leon Volkmar (1879-1959)  
Durant Kilns plate with gold iridescent glaze, 1919  
2019.03

#### Gifts of Davidde and Ron Strackbein:

J. Alden Weir (1852-1919)  
*Study of a Woman's Head in Profile (Anna)*, ca. 1890  
Etching on paper  
2019.04.01

J. Alden Weir (1852-1919)  
*Woman Looking Down (Anna)*, ca. 1887-1893  
Etching on paper  
2019.04.02

Reynolds Beal (1867-1951)  
*Cape Sands Cat Boat, Indian Harbor Hotel, Greenwich, Conn, 1888*  
Charcoal or conte crayon on paper  
2019.05

#### Gift of Diana Greene in memory of Patricia Bolling Harding

Collection of seven late-19th to early 20th-

century ladies fans belonging to Anna Tucker Bolling, wife of Col. Raynal C. Bolling  
2019.06.01-.07

### DONATIONS TO THE ARCHIVES: 2019-2020

#### Anonymous

Material related to The Greenwich Antiques Society (before it was renamed in 2015 to The Greenwich Decorative Arts Society). Membership directories 1986-2015; letterhead and invitations; several photographs (prints); CD with images from the 25th anniversary in 2010; 25th anniversary program

#### Jeanet Irwin

Record of the Round Hill & Stanwich Methodist Episcopal Church (1 ledger), Seneca Howland, Pastor, 1866-1880

#### Isabel Malkin

Book: *Why Old Places Matter : How Historic Places Affect Our Identity and Well-Being* by Thompson M. Mayes, 2018

#### Roger Nichols

Cos Cob Power Plant photo album, ca. 1904 to 1920s

#### Katherine LoBalbo

Letter from Martin Painkin to Grace Rich. Mr. Painkin was a close friend of Sgt. Charles Rich. He recounts how Sgt. Rich was mortally wounded during the D-Day invasion.

#### Betsy Jane Curtis Winquist

*A Handbook for Auxiliary Firemen*, published by United States Office Of Civilian Defense, Washington, D.C., December, 1941 stamped "SOUND BEACH FIRE DEPARTMENT, Inc."

**Anthony Marzullo**

2 small photographs of Rippowam Woolen Mill, North Mianus, ca. 1905

**Wayne Scott**

Sanborn map of Greenwich (rolled), 1923. Primarily coastal, New York/Connecticut border, northern portion shows Kensico Reservoir

**Albert Brecken**

Newspaper reprint from *Greenwich Times* of September 29, 1947, of Legal Notice Relative to Amendments to Building Zone Regulations/ Building Zone Map; Zoning Map of Town of Greenwich, January 4, 1939; document with proposed subdivision regulations July, 1953; Planning & Zoning Commission amendments for public hearing on March 17, 1954; Schematic showing where power form Cos Cob Power House was distributed to track (copy reprinted by donor)

**Michele A. Matice**

Records and other documents of the Bruce Women's Golf Association (BWGA)

**Tad Larrabee**

Retired Men's Association membership applications and other documentation

**Coline Jenkins**

Greenwich RTM directories (published by The League of Women Voters of Greenwich): 1992-1993; 2002-2003 (2 copies); 2004-2005; 2006-2007; 2008-2009 (2 copies); 2010-2011; 2012-2013; 2014-2015

**Deama Woods**

Greenwich Boy's Club membership tags/cards belonging to Eugene Woods (donor's brother-in-law) and Kevin Woods (donor's husband): 1938-39; 1946-47, 1947-48; 1949-50; Interstate Ferry Co. ticket for ride between Greenwich and Bayville; small photograph of Island Beach ferry; photograph of young Eugene Francis Woods with trophy for winning a Greenwich beauty contest.

**John Heagney**

Greenwich Bar Association class photos for 2011, 36" x 48" on foam board backing

**Steve Zimmer**

Photo album of Highet residence and family on Round Hill Road (current address of property is 68 Round Hill Road)

**Beverly Smith, Amy Butler**

Centennial History, Riverside

Garden Club, 1919-2019 (oversized 3-ring binder) and flash drive of scanned images. Scrapbooks, newspaper clippings, photographs, awards, etc.

**Marie Valle Wardell**

Photos of Greenwich Gas Co. store and staff, ca. 1940s; images of parades and races in Byram, 1918; 2 railroad related postcards (details unknown but possibly Greenwich)

**James T. Larkin**

Photocopy of 1900 sales brochure "Rambles in Rock Ridge" for Rock Ridge development

**Patricia Bolling Harding (by her daughter Diana H. Greene)**

Croix d'officier de la Légion d'honneur awarded posthumously to Col. Raynal Bolling

Letters addressed to Anna Bolling, widow of Col. Raynal C. Bolling.

**Henry M. Hull**

Scrapbook created by donor's grandfather documenting the work of the Greenwich Mobile Unit (of which he was a member). Includes shoulder patch from the unit (not part of scrapbook)

**William Heinrich Funk (1866-1949), Portrait of Anya Seton at the age of four, 1908. Oil on canvas (2019.02.02).**



**J. Alden Weir (1852-1919), Study of a Woman's Head in Profile (Anna), ca. 1890. Etching on paper (2019.04.01).**

**Charles and Monika Heimbald**

*A Life Lived Full* by Charles A. Heimbald, Jr. with Max J. Friedman (self-published), 2015; *Designing A Life* by Monika A. Heimbald with Max J. Friedman (self-published), 2016

**Christopher J. Boyle**

*Daily Memorandum Book*, 1862 presumably kept by Mrs. Charles Philip Armstrong, Seven Gables, Belle Haven, Greenwich, Conn. Mrs. Armstrong's calling card is in the book. Book is 4" x 3"



Scrapbook created by donor, Henry M. Hull's grandfather documenting the work of the Greenwich Mobile Unit (of which he was a member).





# Witness STONES

As part of our ongoing work toward Diversity, Equity, Access and Inclusion (DEAI), Greenwich Historical Society staff has committed to the development of preservation initiatives, programming, education resources and engagement in thoughtful discussion with stakeholders inside and outside of our organization.

An important part of this work is our partnership with the Witness Stones Project, a registered non-profit that seeks to restore the history and honor the humanity and contributions of the enslaved individuals who helped build our communities. The Witness Stones project brings students, teachers and local historians together to learn, research and celebrate the lives of enslaved people where they lived and worked. Records show that at least fifteen enslaved people have lived and worked at the Bush-Holley House site in Cos Cob.

The Greenwich Historical Society began its Witness Stones Project with Sacred Heart Academy in the fall of 2019. Middle-school students were assigned Cull and Candice, who were enslaved by the Bush family in the 18th and early 19th centuries. Students studied original documents in our library and archives collections and took a tour of the Bush-Holley House, focusing on Cull and Candice's experiences. The culmination of the Project, postponed due to COVID-19, will be a public ceremony when students and community members will come together to install commemorative Witness Stones and share their findings. These plaques,







traditionally installed at the known residences, places of worship or graves of enslaved persons, serve as a permanent public reminder of lives lived in slavery in our community.

This academic year Greenwich Academy and Greenwich High School have joined the Witness Stones Project. Together, students from these schools will study the lives of Patience, Cull Jr, and Hester Bush. We are hopeful that the final ceremony with our three participating schools will take place outside in spring 2020 when five plaques for Cull, Candice, Patience, Cull Jr. and Hester will be placed near the interpreted slave quarters on the Bush-Holley site in a public ceremony to commemorate and honor their lives and contributions to Greenwich.

Understanding the lived experiences of all Greenwich residents through our exhibitions and education programs is a commitment we have made at the Greenwich Historical Society. We know we cannot tell these stories ourselves. They will come from a rich diversity of experience, voices and objects. Through the Witness Stones Project, our interpretation will continue to evolve with new research as we strive to authentically recreate for our visitors a realistic understanding of what life was like for all members of the Bush household.

We welcome the Greenwich community to be part of this exciting new project. For information on the Witness Stones Project or to learn more about DEAI initiatives, contact Heather Lodge, [hlodge@greenwichhistory.org](mailto:hlodge@greenwichhistory.org).





# Upcoming Exhibitions at the Greenwich Historical Society

## Childe Hassam and *The Red Mill, Cos Cob* January 16 – March 28, 2021

An intimate focus exhibition celebrating the Greenwich Historical Society's recent acquisition of a luminous 1896 canvas by American Impressionist artist Childe Hassam, titled *The Red Mill, Cos Cob*. Painted from the bank of the Cos Cob harbor just steps away from the Bush-Holley House, *The Red Mill, Cos Cob* is a depiction of the Palmer & Duff Shipyard, part of the once bustling nineteenth-century waterfront commercial district known as the Lower Landing. Historic photographs, maps, artifacts and artworks drawn from the Historical Society's collections, will offer a closer look at Hassam's time in Cos Cob and the vanishing neighborhood he and other artists of the Cos Cob art colony so admired.



Childe Hassam, *The Red Mill, Cos Cob*, 1896. Oil on canvas. Greenwich Historical Society, Museum Purchase with funds from Susan G. and James T. Larkin, Sally and Larry Lawrence, Mr. and Mrs. Peter L. Malkin, Debbie and Russ Reynolds, Reba and Dave Williams and Lily Downing and David Yudain.



Vegetable Garden of "Chelmsford," the Elon Huntington Hooker House, Greenwich, Connecticut. Photographed by Frances Benjamin Johnston, ca. 1914. Landscape design by Warren Henry Manning, Charles F. Gillette, supervisor, 1909-1914. Glass lantern slide, hand-colored. Library of Congress.

## Greenwich Gardens and Landscapes, Past and Present

May 5 – September 5, 2021

Mark the arrival of spring with this exhibition exploring the fruitful and fascinating history of gardens in Greenwich and the people who designed, maintained and delighted in them. Examining Greenwich's long horticultural tradition spanning eighteenth- and nineteenth-century farming, grand gardens created by pioneers of American landscape design, and the vibrant legacy of Greenwich's many garden clubs, the exhibition will mine the Historical Society collections to present rarely seen original landscape design drawings, beautiful color photographs, historic farming tools and implements, dried botanical specimens and more. Visitors will also enjoy the Historical Society's recently re-imagined historic campus, with its heritage vegetable gardens, historic grape arbor and Impressionist-inspired floral gardens.

## Life and Art: The Greenwich Paintings of John Henry Twachtman

October 6, 2021 – January 9, 2022

This landmark exhibition of paintings by American Impressionist artist John Henry Twachtman will be the first to focus exclusively on the artist's depictions of his home and its surrounding landscape in Greenwich. Twachtman's repeated use of his home, gardens and family as subject matter, and the modifications he made to his house and grounds over time, blended life and art into a harmonious artistic project. Featuring 25 artworks on loan from museums and private collections, *Life and Art: The Greenwich Paintings of John Hent Twachtman*, will be accompanied by a fully illustrated 160-page catalogue.



John Henry Twachtman, *September Sunshine*, ca. 1891-1893. Oil on canvas. 25 x 30 inches. Crystal Bridges Museum of American Art, Bentonville, Arkansas, 2005.16.

# John Henry Twachtman Online

*A Joint Project of the Greenwich Historical Society and Lisa N. Peters*

Debuting in 2021 on [greenwichhistory.org](http://greenwichhistory.org)



John Henry Twachtman, *Old Holley House, Cos Cob*, 1901. Oil on canvas. 63.9 x 63.9 centimeters.  
Cincinnati Art Museum, John J. Emery Fund.

The Greenwich Historical Society is delighted to be the future home of John Henry Twachtman Online, the definitive catalog of the work of American Impressionist artist John Henry Twachtman (1853–1902). In development for over two decades under the leadership of Lisa N. Peters, Ph.D., Twachtman Online is a digital publication providing a comprehensive scholarly record of Twachtman’s oeuvre of approximately 700 artworks.

Free and accessible to all through the Greenwich Historical Society website, Twachtman Online will consist of searchable illustrated catalog records featuring scholarly essays and supplementary documentation including exhibition catalogues, articles, photographs and the artist’s letters.

John Henry Twachtman Online has been made possible by the generous support of the Mr. and Mrs. Raymond J. Horowitz Foundation for the Arts, and by the Lunder Foundation and the Cross Family Charitable Fund.



# Honoring Barbara & Ray Dalio

## IN CONVERSATION WITH DAVID RUBEINSTEIN,

Philanthropist and Co-founder  
of the Carlyle Group

*Award Presented by*

**Indra Nooyi**

former Chairman and CEO of PepsiCo

**TUESDAY, JUNE 8, 2021**

The Greenwich Historical Society is pleased to honor Barbara and Ray Dalio at our “History in the Making” event for their philanthropic contributions to Greenwich and beyond, and their commitment to ensuring a future that offers generations to come opportunities to make our world at large a better place. We are excited to announce that businessman, investor, and philanthropist David Rubenstein will be interviewing the Dalios in an intimate fireside chat, and Indra Nooyi, former Chairman and CEO of PepsiCo, and last year’s honoree, will be presenting the award.

## TICKETS & SPONSORSHIP PACKAGES AVAILABLE NOW

visit [greenwichhistory.org/history-in-the-making](https://greenwichhistory.org/history-in-the-making)



## AWARD COMMITTEES

### HONORARY CO-CHAIRS

Roberta and Steve Denning  
Regina and Mario Gabelli  
Deborah and Chuck Royce

### DINNER COMMITTEE

Andersen Tax  
Bank of America  
Blavatnik Family Foundation  
Carolyn and Maurice Cuniffe  
Haley and Joe Elmlinger  
Icy and Scott Frantz  
Suzanne and Ramsey Frank  
Jeanine and Robert Getz  
Hearst Connecticut Media  
The Jayaweera Family  
Isabel and Peter Malkin  
Ingrid and Steve McMeniman  
Stefanie and Daniel W. Offit  
Nancy and Morris W. Offit  
The Resource Foundation  
Debbie and Russ Reynolds  
Davidde and Ron Strackbein  
Lisa and Scott Stuart  
Marree and John Townsend  
Reba and Dave Williams

*\* in formation*

Greenwich Magazine is proud to celebrate Greenwich Historical Society's Antiquarius 2020 – the intersection between design and history.

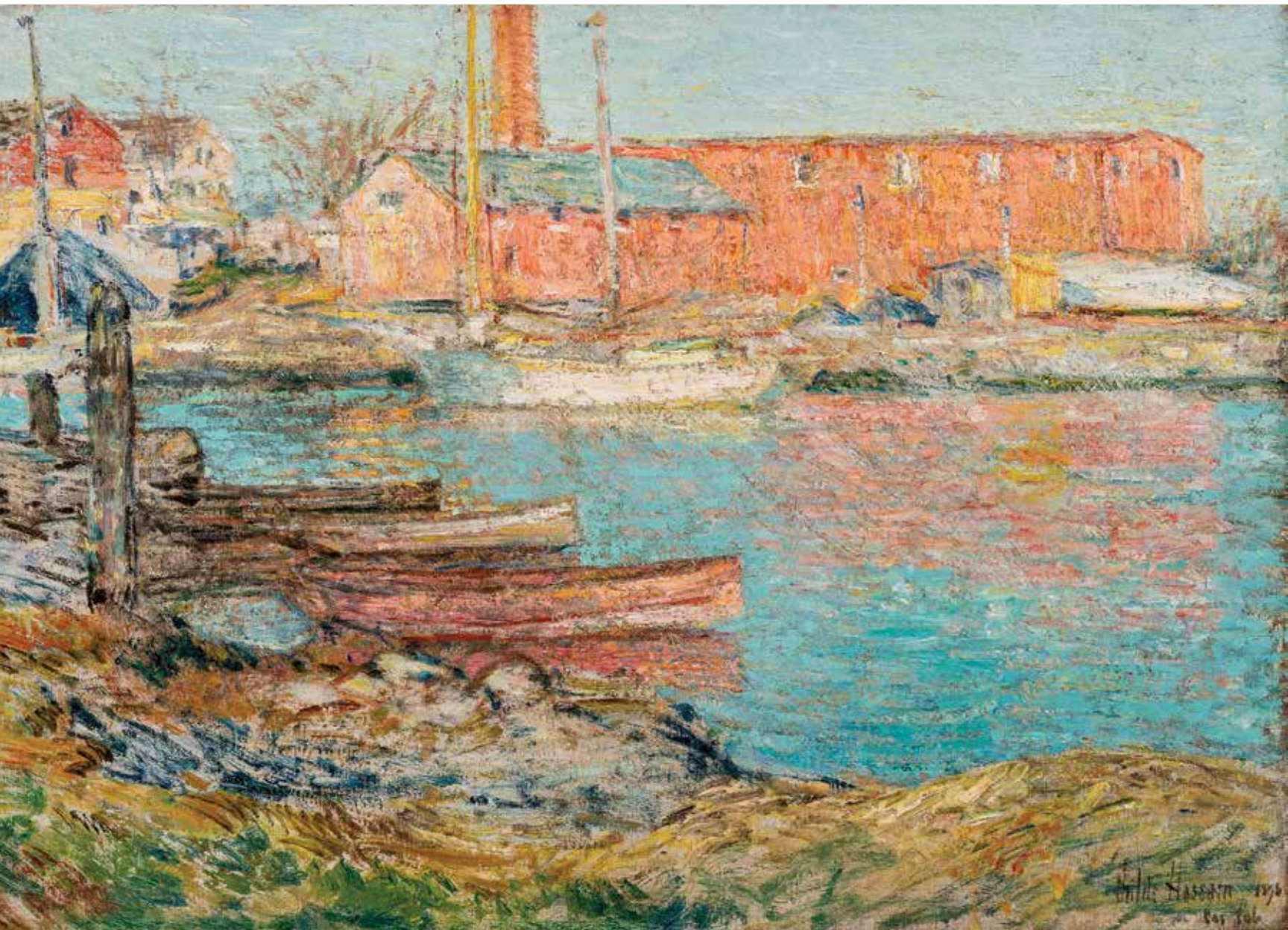


Check out the best of Greenwich at: [GreenwichMag.com](https://GreenwichMag.com)

MOFFLY MEDIA 205 Main Street, Westport, CT 06880 P 203 222 0600 F 203 222 0937 [Advertise@MofflyMedia.com](mailto:Advertise@MofflyMedia.com)



# Acquisition of Childe Hassam's *The Red Mill, Cos Cob*





This summer the Greenwich Historical Society made a significant addition to our collection of Cos Cob Art Colony paintings with the landmark acquisition of *The Red Mill, Cos Cob* by American Impressionist painter Childe Hassam (1859-1935).

Utilizing a lively palette and short, punctuated brush strokes, in *The Red Mill, Cos Cob* Hassam captured the rusticated appearance of the Palmer & Duff shipyard, once located on the small peninsula in the Mianus River opposite the Bush-Holley House. This canvas is among the earliest of Hassam's paintings made in Cos Cob, dating to his first visit to the Holley family's boarding house in the autumn of 1896. Hassam would return to Cos Cob many times between 1896 and 1918, producing dozens of paintings, pastels and prints depicting the Holley House and the nearby waterfront commercial district known as the Lower Landing.

In the mid-19th century Palmer & Duff did steady trade building commercial sailing vessels, but by the 1890s their business shifted to repairing small oyster sloops and pleasure yachts owned by wealthy New Yorkers who had begun settling in Greenwich. The company would cease operations altogether just eleven years after Hassam painted this view, one of many changes that would ultimately alter the character of the Lower Landing as the twentieth century continued.

The purchase of the painting was made possible through the generosity of Susan G. and James T. Larkin, Sally and Larry Lawrence, Mr. and Mrs. Peter L. Malkin, Debbie and Russ Reynolds, Reba and Dave Williams and Lily Downing and David Yudain. Special appreciation is due to Lily Downing of Downing Yudain, whose guidance and expertise ensured the success of this important acquisition.

A small focus exhibition, highlighting the newly acquired painting, and offering further history on the Palmer & Duff shipyard and the changing landscape of the Cos Cob Lower Landing, is planned for January 2021.



Photograph of the Palmer and Duff Shipyard taken in October, 1906. Greenwich Historical Society, photograph collection.

*Previous page:* Childe Hassam, *The Red Mill, Cos Cob*, 1896. Oil on canvas. Greenwich Historical Society, Museum Purchase with funds from Susan G. and James T. Larkin, Sally and Larry Lawrence, Mr. and Mrs. Peter L. Malkin, Debbie and Russ Reynolds, Reba and Dave Williams and Lily Downing and David Yudain.



A rustic wooden shutter with a wreath of dried branches and white berries hanging on a stone wall. The shutter is made of dark brown wood and is mounted on a wall of irregularly shaped stones. The wreath is made of dried branches and is decorated with small white berries and some dried leaves. The background is a stone wall with a mossy roof above it. The foreground shows some greenery and purple flowers.

*Remotely or in Person,  
The Greenwich Historical Society  
is here for us!*

*Isabel and Peter Malkin*



CO-CHAIRS  
Heather Sargent  
Alexandra Cummiskey

COMMITTEE  
Sue Baker  
Brooke Bancroft  
Sharon and Stephen Baum  
Alyssa Keleshian Bonomo  
Alisa S. Brockelman  
Ashley Bruynes  
Rob and Eunice Burnett  
Melinda and Brian Carroll  
Holly Cassin  
Leason and Chris Cercy  
Peter Cummiskey  
Sharon Dorram and Damian Krause  
Stephanie and Andrew Douglass  
Lauren DuPont  
Ellsworth Ford Associates  
Carrie Emery  
Meredith and Brian Feurtado  
Suzanne and Ramsey Frank  
Cosby W. George  
Heather Georges  
Jeanine and Robert Getz  
Elise and Greg Green  
Spencer and Ren Harman  
Holly and Tom Harty  
Susan S. Hinrichs  
Diane Jennings  
Mr. and Mrs. Wayne T. Jervis  
Mr. James and Ambassador  
Brenda Johnson  
Joni and Kevin Kimberlin  
Tammy Kiratsous  
Michael Kovner and  
Jean Doyen de Montaignou  
Alexa Maddock  
Isabel and Peter Malkin  
Mimi Moulton  
Mr. and Mrs. Frank Newman  
Emma and Mark Pennington  
Deborah and Chuck Royce  
Carter Simonds  
Alease and Paul Tallman  
Catherine Tompkins  
Karen Toy  
Liza and Ned Weihman  
Michael Zimmerman

# Greenwich Landmarks Recognition Reception and David Ogilvy Preservation Award

**SUNDAY, APRIL 25, 2021**



Innis Arden Cottage is historically significant as one of the more important surviving structures of Innis Arden, the largest and most complex estate on the Long Island Sound shoreline of Greenwich, developed between 1884 and 1910 for J. Kennedy Tod. It was designed by Katharine C. Budd (1860-1951) one of the country's first woman architects and the first to be licensed by the State of New York. Innis Arden Cottage was used primarily as a guest house and is historically significant in its own right because it served as a summer retreat between 1906 and 1913 for Anna Maxwell, one of the most important figures in American nursing history.

The 100th anniversary of the passage of the 19th Amendment granting women the right to vote, and the brave women who made it possible inspires this year's Landmarks Recognition Program. Four Greenwich structures owned, designed or dedicated to trailblazing women will receive a plaque in recognition of their design excellence and value in preserving Greenwich's unique architectural heritage.

The properties include Mary Tyler Moore's stately fieldstone home, the Greenwich YWCA, as well as Innis Arden Cottage, and a spectacular multi-winged Tudor dwelling in Rock Ridge.

David Ogilvy will be granted posthumously with Greenwich Historical Society's first David Ogilvy Preservation Award to recognize his contributions historic preservation in Greenwich. The award will be presented to Anne Ogilvy and family at the Greenwich Historical Society's Landmark Recognition reception on April 26th.

**TICKETS & SPONSORSHIP  
PACKAGES AVAILABLE NOW**

visit [greenwichhistory.org/landmarks](https://greenwichhistory.org/landmarks)





THE  
SHADE  
STORE

custom made simple.

## THE VICTORIA HAGAN COLLECTION

AVAILABLE FOR ROMAN SHADES AND DRAPERY EXCLUSIVELY AT THE SHADE STORE

Visit us at: Greenwich | New Canaan | Westport

SHOWROOMS NATIONWIDE [THESHADESTORE.COM](http://theshadestore.com) 800.754.1455



## A Tribute and Memorial to David F. Ogilvy

*Because of his position, he could have sold Greenwich out a billion times. I remember him showing people historic homes such as ours and trying to get them to think out of the box. He never sold out. He tried to get a tax abatement for people who would agree not to sell land, but it was unpopular with realtors. He was principled; he was a gentleman.*

— Elise Hillman Green, co-founder, Historic Properties of Greenwich

David Ogilvy (1942–2020) was the former President and owner of David Ogilvy & Associates, a leading force in Greenwich real estate for over 40 years. An enthusiast for Greenwich’s history and quality of life, he sponsored for many years the Historical Society’s annual Antiquarius Holiday House tours and its Greenwich Landmarks programs to document and plaque significant historic structures in Greenwich. He led the joint initiative with the Historical Society, Land Trust and Sandra Hillman to create a land easement and preservation restriction in 2003 for Stoneybrooke, the first local historic property located outside of an historic district to be permanently protected in Greenwich. He was a cherished friend and member of the Greenwich Historical Society’s Advisory Council since 2007 and contributed to its Reimagine the Campus capital campaign in 2017. He served faithfully as a trustee of the Greenwich Land Trust for ten years beginning in 1998 and as its president from 2002–2003, greatly admired for leading the charge for the “100 Days to Save Treetops” fundraiser. David made significant contributions toward the preservation of Fisher Field in 1999 and the Mueller Preserve in 2012. He was the first person to receive the Audubon’s Lifetime Conservation Award and was also honored with the Boys and Girls Club National Medallion award and as Rotary Club Citizen of the Year in 2010. Greenwich will forever be grateful for his leadership, enthusiasm and vision that enabled the preservation of so many historic places and open land in Greenwich.



The Jeremiah Mead House is located at 29 Taconic Road, Greenwich, Conn. The original section dates from the year 1751.





# Treasurer's Report

## 2020 Annual Meeting

The following provides an overview of the fiscal year that ended June 30, 2020. At the time of this publication, the audit was not complete, so the financial information cited is unaudited. However, we do not expect any significant adjustments. When completed, the audited financial statements and the Form 990 will be posted on the Historical Society's website and will be available in hard copy on its campus.

It should come as no surprise that this past fiscal year was most unusual. While the first nine months of the year reflected predominantly steady financial performance, the last quarter presented unique challenges as the Historical Society and world dealt with the impact of COVID-19. The campus was closed, events were canceled or postponed, and some employees were furloughed. Consequently, the operating results fell below budgeted expectations with total operating revenues of \$1.5 million and total operating costs of \$1.7 million.

Special Events revenue was hit especially hard because the History in the Making dinner, which was originally scheduled for May, had to be postponed due to COVID. Contributions

were below budget due to lower than anticipated corporate donations and membership dues. Additionally, tuition and fees and facilities rentals were negatively impacted due the campus closure. On a positive note, it is commendable and a testament to donors that the Historic Trust, the Historical Society's largest fundraising effort, managed to meet its budgeted goals during the spring even through such adversity.

To manage the closure and uncertainty surrounding the corona virus, the Historical Society applied for and received the Small Business Administration Payment Protection Program Loan in April of approximately \$190,000. This loan was used to rehire furloughed staff and maintain pre-COVID staffing levels. It is expected to be forgiven in the coming fiscal year.

In October 2019, the Historical Society sold a house on Strickland Road that it had owned for many years. Proceeds of approximately \$550,000 from the sale of the house were placed in a board designated fund and will be used to support future operations.

The Historical Society ended the year with net assets of \$24 million.

We look forward to the coming year with great anticipation and will do our best to achieve our budget goals.

	Unaudited Year Ended June 30, 2020	Audited Year Ended June 30, 2019
<b>Operating Activities</b>		
<b>Revenues &amp; Assets Released</b>		
Membership & Contributions	570,889	547,317
Program & Services	110,196	102,495
Antiquarius & Special Events (net)	161,108	352,093
Assets Released from Restrictions for Operating	661,400	698,791
<b>Total Revenues &amp; Assets Released</b>	<b>1,503,593</b>	<b>1,700,696</b>
<b>Expenses</b>		
Program Services	1,458,720	1,353,418
Management and General	107,086	98,868
Development	136,033	126,280
<b>Total Expenses</b>	<b>1,701,839</b>	<b>1,578,566</b>
<b>Change in Net Assets from Operations</b>	<b>(198,246)</b>	<b>122,130</b>
<b>Balance Sheet</b>		
	<b>June 30, 2020</b>	<b>June 30, 2019</b>
Cash and Equivalents	942,877	817,261
Other Current Assets	231,776	158,487
Investments	6,926,641	5,784,239
Property, Equipment & Furnishings—net of depreciation	16,631,660	17,315,099
Liabilities	(589,505)*	(576,385)
<b>Net Assets</b>	<b>24,143,449</b>	<b>23,498,701</b>
<b>Fund Balance</b>		
Without Donor Restrictions		
Board Designated	1,473,772	651,548
Unrestricted	16,653,041	17,532,125
With Donor Restrictions		
Time or Purpose Restricted	1,654,157	955,299
Perpetual Endowment (excluding appreciation of \$816,154)	4,362,479	4,359,729
<b>Total Fund Balance</b>	<b>24,143,449</b>	<b>23,498,701</b>

\*includes \$189,700 Payroll Protection Program loan and deferred revenue from postponed events



# Annual Giving

July 1, 2019 – June 30, 2020

## Major Gifts

The Greenwich Historical Society thanks the following contributors to our Major Gifts program, including the Greenwich Historic Trust, who advance our strategic plans and initiatives. The following generous donors and corporate sponsors support the Historical Society's public programs, preservation and tours of the National Historic Landmark Bush-Holley House, education programs for students and families, bi-annual exhibitions, research and preservation services, the digital collections portal and the many print and online publications. These donors also enjoy all the privileges of membership in the Greenwich Historical Society.

## Leadership Circle \$25,000+

Bank of America  
Emily and Len Blavatnik  
Connecticut Department of Economic and Community Development  
Connecticut Humanities  
Barbara and Ray Dalio  
Roberta and Steve Denning  
Suzanne and Ramsey Frank  
Icy and Scott Frantz  
Jeanine and Robert Getz  
Greenwich Roundtable  
Hearst Connecticut Media  
Institute of Museum and Library Services  
Isabel and Peter Malkin  
Arlene and Reuben Mark  
Paula and Thomas McNerney  
Ingrid and Stephen McMenamin  
Mr. and Mrs. Raymond J. Horowitz Foundation for the Arts  
Pepsico Foundation  
Regina Pitaro and Mario Gabelli  
Russell and Deborah Reynolds  
Deborah and Chuck Royce  
Edith and Roy Simpson  
Josie Merck Stevenson  
Davidde and Ron Strackbein  
Lisa and Scott Stuart  
Town of Greenwich  
Maree and John Townsend  
Roxanne and Hugh Vanderbilt  
Reba and Dave Williams





## Preservationists \$10,000 - \$24,999

---

Betteridge Jewelers  
AltieriSeborWieber  
Ashforth Properties  
Carolyn and Maurice Cuniffe  
Douglas VanderHorn Architects  
Elysia and Jonathan Doyle  
Haley and Joe Elmlinger  
Heather and Andrew Georges  
Connie Anne Harris  
Susan and Jim Larkin  
Laura and Scott Malkin  
Northern Trust  
Nancy and Morris Offit  
Anne Ogilvy  
Deborah and Perry Robinson  
Sue Ann Weinberg  
Wyeth Foundation for American Art

## Collectors \$5,000 - \$9,999

---

Susan and David Brownwood  
David Scott Parker Architects  
Alexandra and Peter Cumiskey  
First Republic Bank  
Jane Henson Foundation  
Barbara and Donald Jonas  
Michael Kovner and Jean M. Doyen de Montaignou  
Sally and Larry Lawrence  
Mary Ellen and Harry LeBien  
Kamie and Richard Lightburn  
Lunder Foundation  
Alice Melly  
Indra and Raj Nooyi  
Stefanie and Daniel Offit  
Northern Trust  
Lucy and Larry Ricciardi  
Alease and Paul Tallman  
Catherine and David Tompkins

## Historians \$2,500-\$4,999

---

Brooke and Thomas Ashforth  
Margaret Bragg  
BridgePoint Risk Management  
Kate and Jim Clark  
Connie and Tom Clephane  
Cornelia Cogswell Rossi Foundation  
Carol and George Crapple  
Sherry and Cort Delany  
Helen and Bruce Dixon  
Patti and Eric Fast  
Ellen and Michael Funck  
Ren and Spencer Harman  
Barbara and Joseph Havranek  
Alice and Chris Holbrook  
Elizabeth Hubbell  
Lyn Hurlock  
Susan Lynch  
Kyu and Heinz Maeusli  
Debra and Carl Mecky  
Susan and Robert Morris  
Dinny and Lester Morse  
Nancy E. Barton Foundation  
John E. Nelson  
Barbara Netter  
Anne and Charles Niemeth  
Lindsay and Dave Ormsby  
Emma and Mark Pennington  
Florence Phillips  
Natalie Pray  
John Raben  
Kate and Ray Rudy  
Leigh Ann and Bob Ryan  
Jane and John Seel  
Susan and Eugene Shanks  
Toland and Robert Sherriff  
Heidi and Scott Smith  
Missy and Scott Wolfe



# Annual Giving

## Capital Campaign Gifts

---

AltieriSeborWieber, LLC  
Connecticut Department of Economic & Community Development  
David Scott Parker Architects  
Haley and Joe Elmlinger  
Lauren and Gray Hampton  
Arlene and Reuben Mark  
Alice P. Melly  
Ellen and John Reid  
Josie Merck Stevenson  
Lisa Tannebaum and Don Brownstein  
Roxanne and Hugh Vanderbilt  
Carrie and Russell Wallack  
Ellen and Michael Wolfson

## Named Endowment Funds

---

Gifts to the Endowment support the Historical Society's general operations and programs in perpetuity. We gratefully acknowledge the following named endowment funds:

Antell Family Fund  
Blumenthal Family Fund  
William C. Crooks Fund  
Barbara and Ray Dalio Title 1 Arts & History Program Fund  
Roberta and Steven Denning Title 1 Arts & History Program Fund  
Isabel and Peter Malkin Fund  
Russell and Deborah Reynolds Fund  
RT Vanderbilt Trust  
Strackbein Archives Fund  
Claire and Hugh Vanderbilt Fund  
David R. A. Wierdsma Fund

## General Endowment Gifts

---

Heidi and Scott Smith  
Russell and Deborah Reynolds





## History in the Making

### Honoring Barbara and Ray Dalio

*Event rescheduled to June 8, 2021 due to COVID-19*

#### Dinner Committee\*

Bank of America  
 Emily and Len Blavatnik  
 Carolyn and Mo Cunniffe  
 Roberta and Steven Denning  
 Haley and Joe Elmlinger  
 Suzanne and Ramsey Frank  
 Icy and Scott Frantz  
 Regina Pitaro and Mario Gabelli  
 Jeanine and Robert Getz  
 Hearst Connecticut Media  
 The Jayaweera Family  
 Isabel and Peter Malkin  
 Ingrid and Steve McMenamin  
 Stefanie and Daniel Offit  
 Nancy and Morris Offit  
 Debbie and Russ Reynolds  
 Deborah and Chuck Royce  
 Edith and Roy Simpson  
 Davidde and Ron Strackbein  
 Lisa and Scott Stuart  
 Marree and John Townsend  
 Reba and Dave Williams

*\* List in formation*

## Greenwich Landmarks Recognition Event

*Event rescheduled to April 2021 due to COVID-19*

#### David Ogilvy Preservation Award Committee\*

Sharon and Stephen Baum  
 Alyssa and Thomas Bonomo  
 Alisa and Curtis Brockelman  
 Alexandra and Peter Cummiskey  
 Sharon Dorram and Damian Krause  
 Stephanie and Andrew Douglass  
 Lauren and Richard DuPont  
 Heather and Andrew Georges  
 Jeanine and Robert Getz  
 Holly and Tom Harty  
 Susan S. Hinrichs  
 Diane and Jeffrey Jennings  
 Mr. James and Ambassador Brenda Johnson  
 Tammy and Nick Kiratsous

Michael Kovner and Jean Doyen de Montaignou  
 Isabel and Peter Malkin  
 Emma and Mark Pennington  
 Deborah and Chuck Royce  
 Heather and John Sargent  
 Carter Simonds  
 Alease and Paul Tallman  
 The Robin Kencel Group at Compass  
 Karen and Stephen Toy  
 Liza and Ned Weihman

*\* List in formation*

## Harbor Point Book

These gifts support the Greenwich Historical Society's joint publication with the Harbor Point Association of a history of the Harbor Point Association in Riverside, CT.

Jeannemarie and William Baker  
 Veronica and Miguel Barbosa  
 David Battat  
 Jeffrey Bewkes  
 Ipashri and Piyush Bharti  
 Susan and Peter Carlson  
 Timothy Coleman  
 Mary Jane and Peter Dapuzzo  
 Ralph Denunzio  
 Frances and William Deutsch  
 Nancy and Andreas Duus  
 Adrien Fraise  
 Monika and Charles Heimbold  
 Donna Johnson  
 Julie and Marc Johnson  
 Gale and Robert Lawrence  
 Penelope Lehman  
 Susan and Paul Levine  
 Bunny Lukas  
 Galina and Jason Orlosky  
 Hilary and Charles Parkhurst  
 Sharon and Sujana Patel  
 Nancy and Robert Sadock  
 Shannon Signorini  
 Jane and Soren Sorensen  
 Gail and Seth Turkeltaub  
 Anna and Tajar Varghese

---

## Gifts in Honor & Gifts in Memory

---

Jane and Kenneth Bartels in memory of William C. Crooks  
Susan Bevan and Tony Daddino and in honor of Alease Fisher and Paul Tallman  
Kathleen and Francis Burgweger in honor of Anne Niemeth  
Cheryl and Daniel Dunson in honor of Davidde Strackbein  
Ann Elliman in honor of Isabel Malkin  
Muffie and Desmond FitzGerald in honor of Bim Kendall  
Mrs. Howard E.C. Hall in memory of Frederick C. Windisch  
Eliza and Jordan Haviland in honor of Isabel Malkin  
Lyn Hurlock in memory of James B. Hurlock  
Barbara and Donald Jonas in honor of Peter Malkin  
Jay Kane in memory of Margaret Brassler Kane  
Yumi and Eiichiro Kuwana in honor of Haley Elmlinger  
Kamie and Richard Lightburn in honor of Heather Georges  
Laura and Scott Malkin in honor of Isabel and Peter Malkin  
Ingrid and Steve McMenemy in honor of Peter Malkin  
Shelley Ross in honor of Robert Comi  
Pat and Ron Sichler in honor of Helen Cloonan  
Ron Wilson in memory of Edith Lucille Wilson  
Mugs Zales in honor of Isabel Malkin.







# Membership & Annual Fund

**T**he Greenwich Historical Society thanks the following donors whose membership contributions enable the Historical Society to fulfill its mission to preserve the history of the community for future generations. We extend our deepest appreciation to all of our donors.

## Benefactors \$1,000–\$2,499

---

Nancy and Jamie Better  
Susan Bevan and Tony Daddino  
Linda and Richard Breeden  
Bea and Peter Crumbine  
Diana and Lyman Delano  
Jane and Vaughn Dunn  
Ann Elliman  
Kimberly and Jonathan Fiorello  
Muffie and Desmond FitzGerald  
Elizabeth and Robert Kirkpatrick  
Suzanne and Frank Millard  
Lolly Prince  
Ellen and Richard Richman  
Shirley Sontheimer  
Susan Ryder and Michael Tierney  
Beverly and John Watling

Amy and David Wilfert  
Wendy and Peter Wright

## Patrons \$500–\$999

---

Paul Alshooler  
Jeannemarie and Bill Baker  
Karin and Henry Barkhorn  
Lucy and John Barrett  
Matt Bernard  
Eryn and Michael Bingle  
Charles Stroili Inc.  
Cheryl and Daniel Dunson  
Fogarty, Cohen, Russo & Nemiroff LLC  
Elizabeth Lummis and Jordan Haviland  
Jevera Hennessey  
Betty and Pen James  
Stefanie and William Kies

Christine Kleinert  
K.K. and George Lowther  
Crozer Martin  
Adelaide McManus  
Donna Moffly  
Victoria and James Munsell  
Christine and Peter Ness  
Kirsten and Andrew Pitts  
Sam Bridge Nursery  
Maureen Sheehan  
Pauline Willis

## Gifts up to \$499

---

Anonymous (2)  
Mareta and Mark Abbott  
Kathryn Adams  
Caroline Adkins

Valerie Ahneman  
 Amazon Smile  
 Barbara and James Amen  
 American Seniors Golf Association  
 Elaine Andersen  
 Mary Kate and Tom Anderson  
 Anthony Andriulli  
 Rebecca and William Andruss  
 Mary Celeste Anthes  
 Heather and Matthew Antonissen  
 Lynda and Thomas Armbruster  
 Pamela and Richard Arnold  
 Lucelle and Francis Auger  
 Sue Baker  
 Sallie Baldwin  
 Cathleen and Jeffrey Bardos  
 Nancy and Bruce Barker  
 Jane and Kenneth Bartels  
 Susan and Philip Bartels  
 Norma Bartol  
 Hugh Barton  
 Caryl Bate  
 Umran Beba  
 Janet and Andrew Bein  
 Benevity Community Impact Fund  
 Susan and Marvin Berenblum  
 Judith and Peter Berg  
 Jean and Richard Bergstresser  
 Richard Bertolf  
 Lynda and Charles Biggs  
 Rinda and Bill Bishop  
 Vera and John Blankley  
 Patricia and John Blessington  
 Ann Blumensaadt  
 Hsiao-Lien and James Boardman  
 Robin Bodell  
 Virginia and Joseph Boldt  
 Laura and Daniel Botoff  
 Carole Boucher  
 Alice Brennan  
 Catherine Brennan  
 Erin and Christopher Brinton  
 Jennifer and William Brown  
 Kathleen and Francis Burgweger  
 Clelia Burke  
 Nancy and Duncan Burke  
 Anne and Kevin Burns  
 Elizabeth and John Butler

Katherine Butler  
 Elizabeth Cameron  
 Virginia Campbell  
 Ann and John Caron  
 Lynne and Anthony Carvette  
 Juliet Cassone  
 Patricia and John Chadwick  
 Elgie Chaney  
 Olimpia Chiappetta  
 Imre Cholnoky  
 Kathleen Clements  
 Rita Cody  
 Clemency and Cecil Coggins  
 Elizabeth Connolly  
 Cyndi and Edwin Conroy  
 Ginny and John Costaregni  
 Michelle and John Cracraft  
 Lizzie and Geoffrey Craddock  
 Andrea Cross  
 Jane Cumming  
 Marie D'Elia  
 Dee D'Elia  
 Barbara and John Daly  
 Helen Daniels  
 Carleton Davenport  
 Karl Davies  
 Lenore de Csepel  
 Ann and Salvatore DeAngelo  
 Barbara and David Detjen  
 Elizabeth DeVan  
 DeVore & DeMarco LLP  
 Thomas Di Galoma  
 Julie Diraimondo  
 Carol and John Dixon  
 Cory and Robert Donnalley  
 Anne Drake  
 Patricia and John Dudzik  
 Alice Duff  
 Nancy and Kenneth Duffy  
 Louise Dunn  
 Nancy and Andreas Duus  
 Rita Edelston  
 Paul Edmondson  
 Karen and Douglas Elmendorf  
 Arline and Joel Epstein  
 Jennifer and David Evans  
 Constance Fauci  
 Joan Faust

Judith and William Ferdinand  
 Rosita and Mark Fichtel  
 Linda Fields  
 Connie and Mark Figgie  
 Daphne Finney  
 Sandra and Vincent Fiorentino  
 Ray Foote  
 Pauline and Richard Franck  
 Barbara Freeman  
 Susan Frieden  
 Lynn Friend  
 Friends of Autistic People  
 Jenny and William Fullilove  
 Ellen and William Galvin  
 Lynn Garelick  
 Michele and Henry Gasiorowski  
 Paula and Don Gaston  
 Elizabeth Gayola  
 Carolyn Gilbert  
 Heather and Kevin Gillespie  
 Jonathan Glass  
 Katie Gormly  
 Dean Goss  
 Annmarie Graham  
 Marybeth and Joe Greco  
 Green Fingers Garden Club  
 Amy Greenberg  
 Elise and Peter Griffin  
 Karen Griffiths  
 Karen Grund  
 Victoria Hackman  
 Mirella and Hadi Hajjar  
 Holly Hall  
 Mary Halsey  
 Jacqueline and William Hammock  
 Gillian Hannum  
 Beatrice Harper  
 Madeline and Sidney Hart  
 Gail and Thomas Hartch  
 Anne van Ingen and Wesley Haynes  
 Susan Hays  
 Kathy and Douglas Heidt  
 Donna and Norman Heller  
 Rita Henderson  
 Claire and C.W. Henriques  
 Sandra Herman  
 Judy Higgins  
 Linda Hodge



Harrison Hoffman  
 Janetta and John Hoffman  
 Katherine and Robert Hogan  
 Eleanor Holt  
 Jeanne Host  
 Kirby Huget  
 Mary and Philip Huyck  
 Evelyn Iversen  
 Jean Marie and Douglas Jamieson  
 Beverly Jomo  
 Estelle Jones  
 Carol and Jeffrey Junker  
 Jay Kane  
 Theodore Karchuta  
 Patty and Charles Kaufmann  
 Caterina and Brian Kavanagh  
 Kaye & Hennessey LLC  
 Anita Keefe  
 Laura Kelly  
 Irene and Donald Kerr  
 Robbie and Albert Kestnbaum  
 Carole Kiachif  
 Donald Kiefer  
 Libby and Charlie King  
 Mimi and Donald Kirk  
 Janet Kirwan  
 KJR Consulting  
 Patricia Klingenstein  
 Ann Koontz  
 Richard Kriskey  
 Beth and Edward Krumeich  
 Sally and John Kuck  
 Harold Kuplesky  
 Nanette and Fred Laffan  
 Miriam and Donald Landsman  
 Vera and Richard Lane  
 Eileen and Robert Langell  
 John Larkin  
 Gale and Robert Lawrence  
 Hilary Lea  
 Penelope Lehman  
 Eleanor Lindberg  
 Jan Linskey  
 Katherine LoBalbo  
 Terry and Lloyd Lohmeyer  
 Birgitta Longnecker  
 Helga Lose  
 Renate Lose

Lorain and Allen Lovejoy  
 Aileen Lowe  
 Stephanie and Neil Lubarsky  
 Bernice Lukas  
 Barbara and Hunt Lusk  
 Katie Mackey  
 Kanako and Bruce MacLennan  
 Barbara and Thomas Malone  
 Louise and Samuel Marasso  
 Dolores and John Margenot  
 Thelma and Stephen Marino  
 Kathy and Julian Markby  
 Alan Marks  
 Barbara Martin  
 Greg Martinez  
 Shirley and Anthony Marzullo  
 Frank Mazza  
 Stephen McCabe  
 Sue McClenachan  
 Laura McCormick  
 Lise and Kevin McDonald  
 Pat and Miles McDonald  
 Barbara McGuigan  
 Susan McKay  
 Tracy and Paul McKenna  
 Elisabeth and Joseph McLaughlin  
 Lindsay and Peter McWhorter  
 Wendy Mead  
 Joan and John Mendenhall  
 Monica and Stephen Meskers  
 Joann Messina  
 Wendy and Peter Meyer  
 Katherine and Henry Minchin  
 Katharine Minton  
 Dallas Molerin  
 Rosalie Monahan  
 Margaret Moore  
 Muriel Morigi  
 Lucille and John Morris  
 Sandra and Randall Motland  
 George Mott  
 Betsy and Robert Mulcare  
 Naomi Myers  
 Judy Natale  
 A Ralph Navaro, Jr.  
 Andra and Elliot Newman  
 Phyllis and Bruce Nicholas  
 Carolee and Roger Nichols

Elizabeth Nickerson  
 Edmund Noonan  
 Susan Nova  
 Barbara O'Shea  
 Anita and Thomas O'Sullivan  
 David Oglesbee  
 Barbara Ohl  
 Carolyn and Thomas Ohlson  
 Susi and Peter Orbanowski  
 Beverly and Peter Orthwein  
 Barbara Ostrom  
 Sara and Roger Paige  
 Nancy and Tore Palamarcuik  
 Jane and Gary Palmer  
 Rhoda Pappenheimer  
 Lee Parfrey  
 Catherine and Frank Parker  
 Kathryn Payne  
 Andrea Peattie  
 Christopher Peck  
 Florence Phillips  
 Cynthia Powell  
 Marcia Powell  
 Mary Powers  
 PTA of the Japanese School of New York  
 Penny and Frederic Putnam  
 Susan and Bret Ratray  
 Heather and Creighton Reed  
 Coverly and Homer Rees  
 Joy Rendahl  
 Lori and Joseph Romano  
 Shelley Ross  
 Karen Royce  
 Christina and Michael Russell  
 Teruko and Hiro Sakata  
 Anne and Hugh Sampson  
 Melissa and Robert Santangelo  
 Jill and Matthew Schecter  
 Jeannette and G. Peter Schieferdecker  
 Meriwether Schmid  
 Richard Schulze  
 Edward Scott  
 Christine and Rolf Sellge  
 Anne Semmes  
 Karen Shanes  
 Charline and Tony Shaw  
 Martha Shoemaker  
 Patricia and Ronald Sichler

Cherly and Michael Siegmund  
 Beverly Siemon  
 Gary Silberberg  
 Suzanne Simpson  
 Margaret and Thomas Smeriglio  
 Elizabeth and Everett Smith  
 Patrick Smith  
 Candace and Andrew Smoller  
 Mary and Hercules Sotos  
 Sandy and R. Stephen Soule  
 Anne and Matthew Southworth  
 Florence Spool  
 Catherine and Carl Stahl  
 Constance and Arnold Stancell  
 Winifred Staniford  
 Juliet Stautner  
 Linnea Stenberg  
 Sarah Stephenson  
 Caralyn and Douglas Stevens  
 Emerson Stone  
 Val and Clifford Storms  
 Janet Stroble  
 Shanna and William Sullivan  
 Timothy Swanson  
 Barbara Swartz  
 Alexandra Tanner  
 Leslie and Marcus Tarkington  
 Jean Thomson  
 Kathleen Thrane  
 John Toner  
 Emily Toohey  
 Eileen and Paul Toretta  
 Cindi and Daniel Tredwell  
 Virginia and Kees van Meel  
 Mary Vinton  
 Carl Vorder Bruegge  
 Nancy and Mark Voyer  
 Theodor Walworth  
 Mary and David Webber  
 Walter Weed  
 Margaret and Marc Wein  
 Margaret and David Weisbrod  
 Jane and Stuart Weitzman  
 Courtney Wetzel  
 Susan Whitney  
 Sarah Whittemore  
 Donald Wiesen  
 Amy Wilfert

Marie Williams  
 Louise and Joseph Williamson  
 Ron Wilson  
 Lynda and Jack Withiam  
 Ellen and Michael Wolfson  
 Karen and Dmitri Wright  
 Susan and Jordan Yarett  
 Nancy York  
 Jane Young  
 Mugs Zales  
 Barbara Zappavigna  
 Anna and Anton Zauner  
 Lois and Bruce Zenkel  
 Andrew Zieba  
 Karmit Zysman

## Gifts in Kind

Acme Markets  
 Ann's Hobby Shop  
 Black Forest Pastry Shop  
 Sally Bretschger  
 Bruce Museum  
 Café Bon  
 Charles Hilton Architects  
 Charlotte Barnes Interior Design  
 Chicken Joe's  
 Dogwood Books and Gifts –  
 Christ Church  
 DiMare Pastry Shop  
 The Drawing Room  
 Frank W. Dormer  
 Fairfield House and Garden  
 Fairfield Pizza  
 Funky Monkey  
 Betsy Galindo  
 Garden Catering  
 Garden Club of Old Greenwich  
 Jean-Louis Gerin  
 Get Air Trampoline Park  
 Gofer Ice Cream  
 Green Fingers Garden Club  
 Greenwich Garden Club  
 Greenwich Tree Conservancy  
 Habitat Greenwich  
 Interstate Lumber  
 Joey B's Restaurant  
 Lorca Coffee Bar

M Communications  
 Maria del Roscio Esquivel Catering  
 Isabel and Peter Malkin  
 Mathnasium  
 McArdle's Florist & Garden Center  
 Open Arts Alliance  
 The Perfect Provenance  
 Pomeline Jewelry  
 Rummage Room – The First  
 Congregational Church  
 Sam Bridge Nursery  
 Sanctuary Garden Design  
 Sarah Blank Design Studio  
 Smart Kids Toys  
 Smith Party Rentals  
 Steve DeMasco's Shaolin Studios  
 Summer Rain  
 Sweet Lisa's Exquisite Cakes  
 Threads and Treads



# Board & Staff

## Board of Trustees

### Officers

Haley Emlinger  
*Co-Chairman*

Catherine Tompkins  
*Co-Chairman*

Barbara MacDonald  
*Vice Chairman*

Anne Ogilvy  
*Vice Chairman*

Leigh Ann Ryan  
*Treasurer*

David G. Ormsby  
*Secretary*

Isabel Malkin  
*Corresponding Secretary*

Debra L. Mecky, Ph. D.  
*Executive Director and CEO*

### 2019-2020 Trustees

David O. Brownwood  
Holly Cassin  
Thomas P. Clephane  
Alexandra Cumiskey  
B. Cort Delany  
John M. Dixon  
Suzanne C. Frank  
Miguel Garcia-Colon  
Heather Georges  
Robert H. Getz  
Michael A. Kovner  
Susan G. Larkin  
Sally Lawrence  
Ellen T. Reid  
Debbie Reynolds  
Deborah Schmidt Robinson

Deborah G. Royce  
Davidde E. Strackbein  
Alease Fisher Tallman  
Hugh B. Vanderbilt, Jr.  
Dmitri Wright

### Honorary Trustees

Jan Calloway  
Bruce Dixon  
Dorothy Hall  
Peter Malkin  
Meriwether Schmid  
Gloria Van Norden

### Advisory Council

Nathan R. Allen III  
Norma M. Bartol  
Susan J. Bevan  
Margaret Bragg  
Carol Browne  
Carol Crapple  
Aris G. Crist  
Carol Dixon  
Lisa Edmundson  
Patti Fast  
Michael Funck  
Regina Pitaro Gabelli  
Julie Graham  
Myrna Haft  
Anne Harrison  
Charles Hilton  
Christopher C. Holbrook  
E. Pendleton James  
Anita Joslin  
Bonnie Levison  
Susan Lynch  
Jennifer Moross  
John M. Morris

John E. Nelson  
Sara Nelson  
Anne Niemeth  
Sabrina Raquet  
Russell S. Reynolds, Jr.  
Charles M. Royce  
Susan Shanks  
Valerie Stauffer  
John L. Townsend III  
Robert and Lucy Walsh  
Irene Zelinsky

### Staff

Debra Mecky  
*Executive Director and CEO*  
  
Michele Couture  
*Director of Operations  
and Visitor Services*  
  
Maggie Dimock  
*Curator of Collections  
and Exhibitions*  
  
Anna Marie Greco  
*Director of Education*  
  
Barbara Johann  
*Museum Store Manager*  
  
Laura Kelly  
*Development Associate*  
  
Jinwei Li  
*Director of Finance*  
  
Heather Lodge  
*Manager of Youth  
and Family Programs*  
  
Laura McCormick  
*Public Relations Consultant*  
  
Ryan Nuckel  
*Director of Development*

Cai Pandolfino  
*Director of Marketing  
and Communications*  
  
Christopher Shields  
*Curator of Library and Archives*  
  
Kathy Stefanatos  
*Visitor Services Coordinator*  
  
Daniel Suozzo  
*Senior Special Events Manager*  
  
Nola Taylor  
*Researcher*

### Docents

Nancy Barker  
Sally Bretschger  
John Bridge  
Lucy Broome  
Wendy Dziurzynski  
Jean Eifert  
Isabella Ferrante  
Loredana Foti  
Joan Goss  
Deborah Kupper  
Kate Loh  
Vanessa Marsh  
Dean McKenna  
Belinda Pitt  
Lucy Van Atta

# Volunteers

## American Alliance of Museums Accreditation Participants

Nancy Beck  
Vernon Beck  
Kelly Bridges  
Susan Cohen  
Heather Cotter  
Bruce Dixon  
Diane Fox  
Jane Fragner  
Alan Gunzburg  
Rick Hansen  
Mary Ellen LeBien  
Janet McGuigan  
Nancy Moskowitz  
Ross Ogden  
Meriwether Schmid  
Peter Tesei  
John Toner  
Scott Wands  
Joe Williamson

## Antiquarius Leadership

### Honorary Chairs

Icy and Scott Frantz  
Catherine and David  
Tompkins  
Alease and Paul Tallman

## Honorary Design Chair

Bronson Van Wyck

## An American Story Exhibition

Jason Grippo  
Umran Beba

Pietro Covello  
Bea Crumbine  
Salvatore Di Pietro  
Frank Di Vincenzo  
Leoncio and Alicia Flores  
Velazco  
Miguel Garcia-Colon  
Alberto Larraguibel-Stieb  
Peter Malkin  
Tatiana and Vladimir  
Nichiforova  
Indra Nooyi  
Vitaly and Valentina Tropp

## Audit Committee

David Ormsby, *Chair*  
Bruce Dixon  
Cort Delany

## Buildings and Grounds Committee

John Dixon, *Chair*  
David Brownwood  
Bea Crumbine  
Jeanine Getz

## Collections Committee

Meriwether Schmid, *Chair*  
Lily Downing  
Kimberly Fiorello  
Susan Larkin  
Sally Lawrence  
Mary Ellen LeBien  
Isabel Malkin  
Ross Ogden  
Debbie Reynolds  
Davidde Strackbein

## Development Committee

Suzanne Frank, *Co-Chair*

Robert Getz, *Co-Chair*  
Catherine Tompkins, *Co-Chair*  
Holly Cassin  
Tom Clephane  
Heather Georges  
Michael Kovner  
Barbara MacDonald  
Anne Ogilvy  
Ellen Reid  
Deb Robinson  
Leigh Ann Ryan

## Development Sub-Committees

### Fundraising and Marketing Strategy Group

Peter Malkin, *Chair*  
Haley Elmlinger  
Barbara MacDonald  
Anne Ogilvy  
Deb Robinson

## 90th Anniversary Task Force

Barbara MacDonald, *Co-Chair*  
Anne Ogilvy, *Co-Chair*  
Suzanne Frank  
Heather Georges

## Designer Event Committee

Eryn Bingle, *Co-Chair*  
Betsey Ruprecht, *Co-Chair*  
Catherine Tompkins, *Co-Chair*  
Betsey Ruprec  
Charlotte Barnes  
Holly Cassin  
Kelly Corroon  
Heather Georges  
Rachel Goulding

Ren Harman  
Samantha Mollett  
Mimi Moulton  
Anne Ogilvy  
Ashley Reid  
Jordan Rhodes  
Abby Ritman  
Valerie Rockefeller  
Leigh Ann Ryan  
Toland Sherriff  
Carter Simonds  
Susan Sleeper  
Alease Fisher Tallman

## Exhibition Committee

Heather Cotter, *Chair*  
Tom Clephane  
Bea Crumbine  
Carol Nipomnich Dixon  
Jane Fragner  
Kim Harke Sushon  
Page Knox  
Susan Larkin  
Barbara Laux  
Tracy McKenna  
Davidde Strackbein  
Dmitri Wright

## Finance Committee

Leigh Ann Ryan, *Chair*  
Alexandra Cumiskey  
Haley Elmlinger  
Robert Getz  
Heinz Maeusli  
Hugh Vanderbilt, Jr.

## Governance Committee

David Ormsby, *Co-Chair*  
Alease Fisher Tallman, *Co-Chair*  
Tom Clephane  
Suzanne Frank



Robert Getz  
Susan Larkin  
Barbara MacDonald  
Anne Ogilvy

## Green Team

Rosemarie Anner  
Lindsay Baker  
Virginia Cheney  
Michele Couture  
Dimple Desai  
Joan Faust  
Jonathan Glass  
Joseph Greco  
Anna Greco  
Jason Grippo  
Yuka Kominami  
Susan Norton  
Catherine Stahl  
Winifred Staniford  
Ron Wilson

## History in the Making Committee

Peter Malkin, *Co-Chair*  
Haley Elmlinger, *Co-Chair*  
Robert Getz, *Co-Chair*  
Connie Clephane  
Tom Clephane  
Alexandra Cummiskey  
Russell Reynolds, Jr.

## Landmarks Event Committee

Alexandra Cummiskey, *Co-Chair*  
Heather Sargent, *Co-Chair*

## Landmarks Program Committee

Robin Kencel, *Chair*  
John Dixon  
Rose Scott Long  
Laura McCormick  
Chris Meech  
Greg Tankersley

## Library and Archives

Mary Jane Cameron  
Richard Kriskey

Samuel Marasso  
Stephen Marino  
Davidde Strackbein  
John Toner

## Marketing Rentals Task Force

Haley Elmlinger  
Anne Ogilvy  
Debbie Reynolds  
Leigh Ann Ryan  
Catherine Tompkins

## Museum Store

Dolores Simons

## Preservation Network

Diane Fox, *Chair*  
Stephen Bishop  
Josephine Conboy  
Katie DeLuca  
Nancy Dickinson  
Chris Franco  
Charles Hilton  
Will Kies  
Joann Messina  
Mark Pruner  
Paul Pugliese  
Russ Reynolds  
Renee Seblatnigg  
Fifi Sheridan

## Program Committee

Susan Larkin, *Chair*  
Tom Clephane  
Susan Cohen  
Heather Cotter  
Haley Elmlinger  
Jane Fagner  
Miguel Garcia-Colon  
Isabel Malkin  
Davidde Strackbein  
Catherine Tompkins

## Planned Giving Committee

Davidde Strackbein, *Chair*  
Cort Delany

Barbara MacDonald  
Ellen Reid  
Deb Robinson

## Professional Advisory Council

Ellen Reid, *Co-Chair*

**Northern Trust**

Deborah Robinson, *Co-Chair*

**Lioness Art Partners**

Michael Clear

**Wiggin & Dana**

B. Cort Delany

**Cummings & Lockwood**

Glen Degenaars

**First Republic Bank**

Robert DeVellis

**Blair & Potts**

Charles Dowling

**Sullivan & Cromwell**

Thom Healy

**Bessemer Trust**

Jevera Hennessey

**Kaye & Hennessey**

Stephen Napier

**Ivey, Barnum & O'Mara**

Charles Pieterse

**Whitman, Breed, Abbott**

**& Morgan**

Amy Wilfert

**Day Pitney**

# Antiquarius

## Antiquarius Board Liaisons

Heather Georges  
Anne Ogilvy  
Barbara MacDonald  
Alease Tallman  
Catherine Tompkins

## Antiquarius Chairs

Holly Cassin  
Courtney Gardiner  
Heather Georges  
Melissa Hawks  
Susannah Heyworth  
Rachel Kelley  
Michael Kovner  
Alicia Laing  
Barbara MacDonald  
Kyle MacDougall  
Anne Ogilvy  
David Ogilvy  
Ashley Reid  
Jordan Rhodes  
Susan Sleeper  
Alease Fisher Tallman  
Catherine Tompkins  
Tara Vittone

## Antiquarius Committee

Caroline Adkins  
Hadley Allen  
Judy Banker  
Charlotte Barnes  
Mary Beaudry  
Eliza Bock  
Melissa Boulan

Brooke Bremer  
Sally Bretschger  
Elizabeth Bretschger  
Lisa Brownstein  
Ashley Bruynes  
Ginge Cabrera  
Molly Calhoun  
Libby Cameron  
Holy Cao  
Rose Caruso  
Justine Cerniglia  
Wendy Cheng  
Katie Clark  
Connie Clephane  
Altier Craft  
Bea Crumbine  
Holli Cutting  
Lindsay Dalton  
Emoticons Desally  
Amy DeVito  
Elaine Doran  
MaryAnn Drago  
Linda Drake  
Madeline Baker Dumrey  
Connie Fauci  
Laura Feda  
Katie Feinberg  
Ginny Ferrarese  
Laurel Fine  
Lara Foley  
Courtney Gardiner  
Mary Garth  
Kara Gerardi  
Tracey Gerber  
Marybeth Gilmartin  
Harriet Gilmer  
Janet Giusti  
Charlene Gorin  
Joan Goss  
Tammy Grimes  
Dana Hammack  
Leigh Hansen

Ren Harman  
Wendy Hill  
Meg Hock  
Elizabeth Hopley  
Emily Hulce  
Trish Hussey  
Erin Jensen  
Ellis Johnston  
Rachel Kelley  
Natalie Kilts  
M.E. Kjaernested  
Kate Loh  
Stephanie Ohl Lubarsky  
Cheryl Lucarelli  
Beth Lucey  
Kelly Lynch  
Kyle MacDougall  
Kerrith Mackay  
Cheryl Makrinos  
Louise Marasso  
Christine Massaro  
Sheila May  
Deedee McKenna  
McKenzie van Meel  
Mallory Molenkamp  
Samantha Mollett  
Adelaide Mueller  
Judy Natale  
Michele O'Gara  
Barbara Ohl  
Lauren O'Malley  
Sarah Osnoss  
Pamela Pagnani  
Jasmin Pazzimbono  
Emma Pennington  
Mia Pepin  
Abby Pillari  
Marion Piro  
Debbie Prouty  
Patt Quigley  
Mary Jo Riddle  
Kirsten Riemer

Jennifer Roach  
Rachel Robison  
Nancy Rosengarten  
Catie Salyer  
Emily Sapione  
Pollie Seidel  
Wedy Cheng Shell  
Toland Sherriff  
Carter Simonds  
Delores (Dori) Simonds  
Doris Sisley  
Alison Soldano  
Nancy Speranza  
Marta Stroll  
Colby Summers  
Kim Sushon  
Lisa Tannebaum  
Christina Truesdale  
Marilyn Tucker  
Lisa Ornborg Turits  
Tara Vittone  
Paula Waldman  
Lauren Walsh  
Lisa Wanderer  
Robyn Wasserman  
Kirsten Webb  
Maggie Wein  
Amy West  
Nancy Wolf  
Jeessica Zackham  
Ann Zaminski

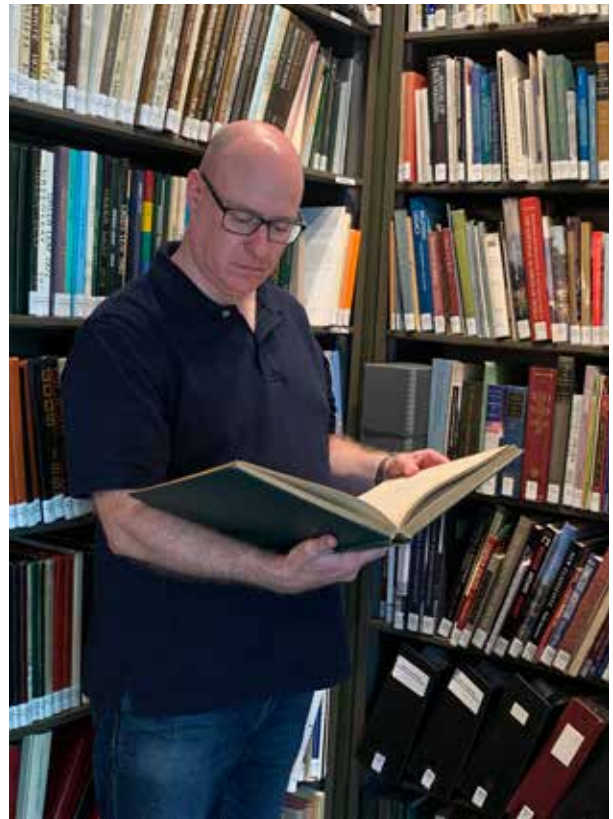


# James Stevenson and Josie Merck Stevenson Library and Archives

## History is Human

**A**s we preserve and interpret Greenwich history, the connections we make — to our past, to each other, and to our future— begin with people. Their contributions are critical to our service to the Greenwich community, in outreach, and in providing key resources for our education programs.

The Greenwich Historical Society's Library and Archives is blessed by professional staff, trustees and dedicated volunteers who make our Greenwich history collections accessible to and representative of our entire community and its recorded history. They help us find, preserve and catalog original manuscripts, records and images to broaden our representation of individuals, organizations and companies that together shine a light on our past.



Christopher Shields

- You can enjoy our library and archives collections on site, online, request research assistance or schedule a group tour by calling 203-869-6899
- Visit our digital portal at [digital.greenwichhistory.org](http://digital.greenwichhistory.org)
- Enjoy the History from Home resources posted on [www.greenwichhistory.org/history-from-home/](http://www.greenwichhistory.org/history-from-home/)
- Send your research question to John Bridge at [jbridge@greenwichhistory.org](mailto:jbridge@greenwichhistory.org)
- Make an appointment with Christopher Shields at [cshields@greenwichhistory.org](mailto:cshields@greenwichhistory.org)
- Tours of the Library and Archives are sometimes given during events at the Historical Society. Check the events section of our website for information. Special tours of the collections for groups of 7 or more are available by advance appointment.



The Greenwich Historical Society's James Stevenson and Josie Merck Stevenson Library and Archives is privately supported by its members and receives no operating support from the Town of Greenwich. The Archives Cataloging and Digitization Project is supported by the Institute of Museum and Library Services and a challenge gift from Ron and Davidde Strackbein.

**Christopher Shields, MLIS**, is our Curator of Library and Archives for nine years. In 2018 he oversaw the move and reinstallation of our history collections into the new James Stevenson and Josie Merck Stevenson Library and Archives Library and Archives. Christopher's knowledge of cataloguing of visual resources, technical expertise and ability to focus on "big picture" ideas and projects to enhance access to archival collections make him a natural leader of our archives team.

**John Bridge** is our Research Associate and walking tour guide. John delivers first-rate reference services to a wide variety of stakeholders who include students, business people, local government and organization, members, non-members, local and non-local researchers. He also leads walking tours for groups and is the author of our online walking tours of Greenwich Point and Greenwich Avenue.

**Leslie Albamonte, MBA, MLIS** is our Project Archivist. Funded by a grant from the Institute of Museum and Library Services (IMLS), she is addressing our backlog of unprocessed and under-described collections to increase public access to information, ideas and networks through stewardship of the library and archives collections.

**Kelsie Dalton, BA History**, is our IMLS Digital Project Associate. She is scanning and cataloging photographs and other images across a number of collections to share them through our digital collections portal ([digital.greenwichhistory.org](http://digital.greenwichhistory.org)) and the Connecticut Digital Archives, which will link to the National Archives.

**Davidde Strackbein, MA History**, is a trustee and former board chairman, who is also our longest serving archives volunteer. She and her husband Ron Strackbein have established dedicated funds to further the Library and Archives cataloging. A dedicated local historian, she chaired the Town of Greenwich's 375th Anniversary.



Leslie Albamonte



Kelsie Dalton



John Bridge



WHEN PEOPLE WISH FOR THE COMFORT OF A  
DEDICATED, KNOWLEDGEABLE AND TRUSTED  
FAMILY, THEY THINK OF ONE NAME

GRAZIANO



WHEN PEOPLE WISH FOR THE COMFORT OF GREENWICH'S MOST SPACIOUS,  
MODERN AND BEAUTIFULLY DESIGNED FACILITY WITH IMMEASURABLE  
COMFORTS PROVIDED, THEY GO TO ONE PLACE

**HAMILTON AVE**

For it is there where you can turn in life's most difficult moments and expect a level  
of service beyond compare. It is there where your trust can be safely placed.

**COXE & GRAZIANO FUNERAL HOME**

The Family, The Facility, The Commitment to You

For locations and more information, visit [WWW.COXEANDGRAZIANO.COM](http://WWW.COXEANDGRAZIANO.COM)

134 HAMILTON AVENUE · 203-869-5968 · GREENWICH, CT 06830 · [INFO@COXEANDGRAZIANO.COM](mailto:INFO@COXEANDGRAZIANO.COM)



Credit: Durston Saylor

## National Trust for Historic Preservation Salutes Greenwich Historical Society

### 2020 Trustees Emeritus Award for Historic Site Stewardship

The Trustees Emeritus Award for Historic Site Stewardship recognizes success and innovation in historic preservation, management, and programming at historic sites.

**Greenwich**  
historical society

Greenwich Historical Society  
Cos Cob, Connecticut

# Holiday Greetings

from Ron  
and Davidde  
Strackbein

Thank you to  
the Greenwich  
Historical Society  
Archives and  
Library, Staff,  
Volunteers,  
Members and  
Donors



In keeping with the Historical Society's role in preserving the evidence of the historical significance of the Town of Greenwich to our nation, the Archives' holiday offering is digital online access to the transcriptions of the Town's Common Place Books: the original Greenwich Land Records and Town Meeting Records dating from 1640 to 1754. These records provide a treasure trove of names and dates for genealogists and also provide researchers and students a pathway to original source documents describing early Native American land transfers, Colonial New England life in southwestern Connecticut, and, for Greenwich residents, the earliest history of their properties. Go to: [digital.greenwichhistory.org](https://digital.greenwichhistory.org)



# The Value of History

*This explanation of the essential importance of history was created by History Relevance initiative and is endorsed by hundreds of organizations across the country, including the Greenwich Historical Society.*



## to ourselves,

### IDENTITY

History nurtures personal and collective identity in a diverse world. People discover their place in time through stories of their families, communities, and nation. These stories of freedom and equality, injustice and struggle, loss and achievement, and courage and triumph shape people's personal values that guide them through life.

### VIBRANT COMMUNITIES

History is the foundation for strong, vibrant communities. A place becomes a community when wrapped in human memory as told through family stories, tribal traditions, and civic commemorations as well as discussions about our roles and responsibilities to each other and the places we call home.

### ENGAGED CITIZENS

History helps people envision a better future. Democracy thrives when individuals convene to express opinions, listen to others, and take action. Weaving history into discussions about contemporary issues clarifies differing perspectives and misperceptions, reveals complexities, grounds competing views in evidence, and introduces new ideas; all can lead to greater understanding and viable community solutions.



## to our communities,

### ECONOMIC DEVELOPMENT

History is a catalyst for economic growth. Communities with cultural heritage institutions and a strong sense of historical character attract talent, increase tourism revenues, enhance business development, and fortify local economies.

### LEADERSHIP

History inspires leaders. History provides today's leaders with role models as they navigate through the complexities of modern life. The stories of persons from the past can offer direction to contemporary leaders and help clarify their values and ideals.

### CRITICAL THINKING

History teaches vital skills. Historical thinking requires critical approaches to evidence and argument and develops contextual understanding and historical perspective, encouraging meaningful engagement with concepts like continuity, change, and causation, and the ability to interpret and communicate complex ideas clearly and coherently.



## to our future.

### LEGACY

History, saved and preserved, is the foundation for future generations. Historical knowledge is crucial to protecting democracy. By preserving authentic and meaningful documents, artifacts, images, stories, and places, future generations have a foundation on which to build and know what it means to be a member of the civic community.





The Greenwich Historical  
Society Preserves and  
interprets Greenwich  
history to strengthen the  
community's connection to  
our past, to each other,  
and to our future.

47 Strickland Road  
Cos Cob, CT 06807  
Tel: 203 869 6899  
[www.greenwichhistory.org](http://www.greenwichhistory.org)

greenwich  
historical society