

NOVEMBER 2022

# Art

## ANTIQUES

FOR COLLECTORS OF THE FINE AND DECORATIVE ARTS



CUBISM | NORA STURGES | FLEMISH MASTERWORKS | MATTHEW WONG

\$7.99US \$8.99CAN



0 71486 02120 9  
DISPLAY THROUGH DECEMBER 2, 2022

ALEX KATZ

# THE GLORY OF GREENWICH

THROUGH January 22 the Greenwich Historical Society will stage a major exhibition for impressionist John Henry Twachtman featuring his home and surroundings in Greenwich, Connecticut. The famed artist lived in the area from 1890 through 1899 and is considered to be when he painted some of his best-known works. The show, titled “Life and Art: The Greenwich Paintings of John Henry Twachtman”, was curated by Lisa N. Peters, Ph.D., an independent scholar and author on several Twachtman and American art publications.

On view will be 18 works on loan from museums and private collections that not

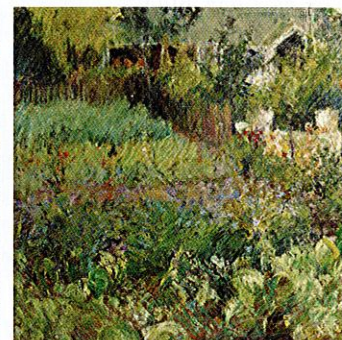
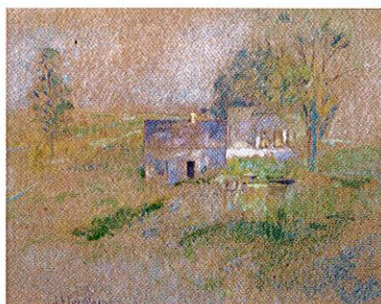
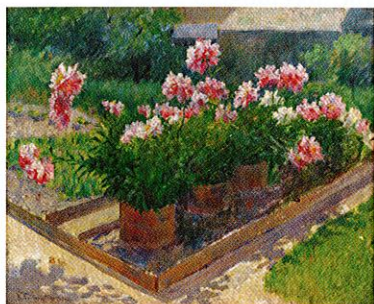
only show Twachtman’s artistic style but also tell aspects of his life including about his home and private environment. In the 1890-1 painting *The Old Homestead, Greenwich, Connecticut*, a small pastel on paper, one of the earliest views of the artist’s home takes center stage. The work *Pink Flowers* (ca. 1895-9) is another example from the homestead, but instead focusing on the beautiful gardens. The painting

highlights the artist’s precise use of light and shadow as the sun streams across every petal. Another of his pieces, *The Cabbage Patch*, could perhaps be titled *Variations in Green* as the majority of the work, from around 1895 to 1899, is a play on the color through nature.

The inclusion of imagery of Twachtman’s home can be seen as moments of self-reflection for the artist, according to Maggie Dimock, Greenwich

Historical Society’s Curator of Exhibitions and Collections. Dimock adds, “His images ask us to consider the ways an artist related to their subject, as well as considering how the way shape of our own homes reveals a part of who we are.”

Along with Twachtman’s work “Life and Art” will include pieces from his contemporaries such as Robert Reid and Theodore Robinson.



## Decorative Rarities

THIS November 11 through 13, Thomaston Place Auction Galleries in Thomaston, Maine, will host its fall auction of important artwork, historic documents and furnishings. The sale will begin at 11 a.m. EST daily and there will be in-gallery previews so collectors can view the works before bidding in-person, online, by telephone or absentee.

In the fine art category will be traditional through abstract works of art that are sure to entice collectors. An abstract expressionist painting by Zao Wou-Ki featuring a heavy red impasto



and sand texture is expected to sell between \$20,000 and \$30,000.

More traditional works include a sunset scene by Louis Remy Mignot, set at \$20,000 to \$30,000, and a work of Gloucester harbor by Jane Peterson with an estimate of \$10,000 to \$15,000. Five paintings by Dahlov Ipcar, mostly animal scenes, will hit the block. The standout of the group is *Malaysian Jungle* (est. \$15,000-\$20,000) that depicts a tiger, leopard, peacock and more in an Asian tropic forest.



Sculpture in the sale will include a large, rare bronze of the *Princeton Tiger* (est.

\$10,000-\$15,000) by Alexander Phimister Proctor and the lovely bronze *Dancing Girl* by Bessie Onahotema Potter Vonnoh that also has an estimate of \$10,000 to \$15,000. Another is a Chinese Ming Dynasty period polychromed wooden Guan-yin sculpture that was carved from one piece of hardwood.

The work, depicting a woman standing on a lotus base holding a vase of nectar, has an estimate of \$25,000 to \$35,000.

The sale is rounded out by a large collection of antique furniture, including Danish and American midcentury pieces, as well as jewelry, silver, fine carpets, estate automobiles and antiquities.

