

2025

Annual Report

Greenwich Historical Society

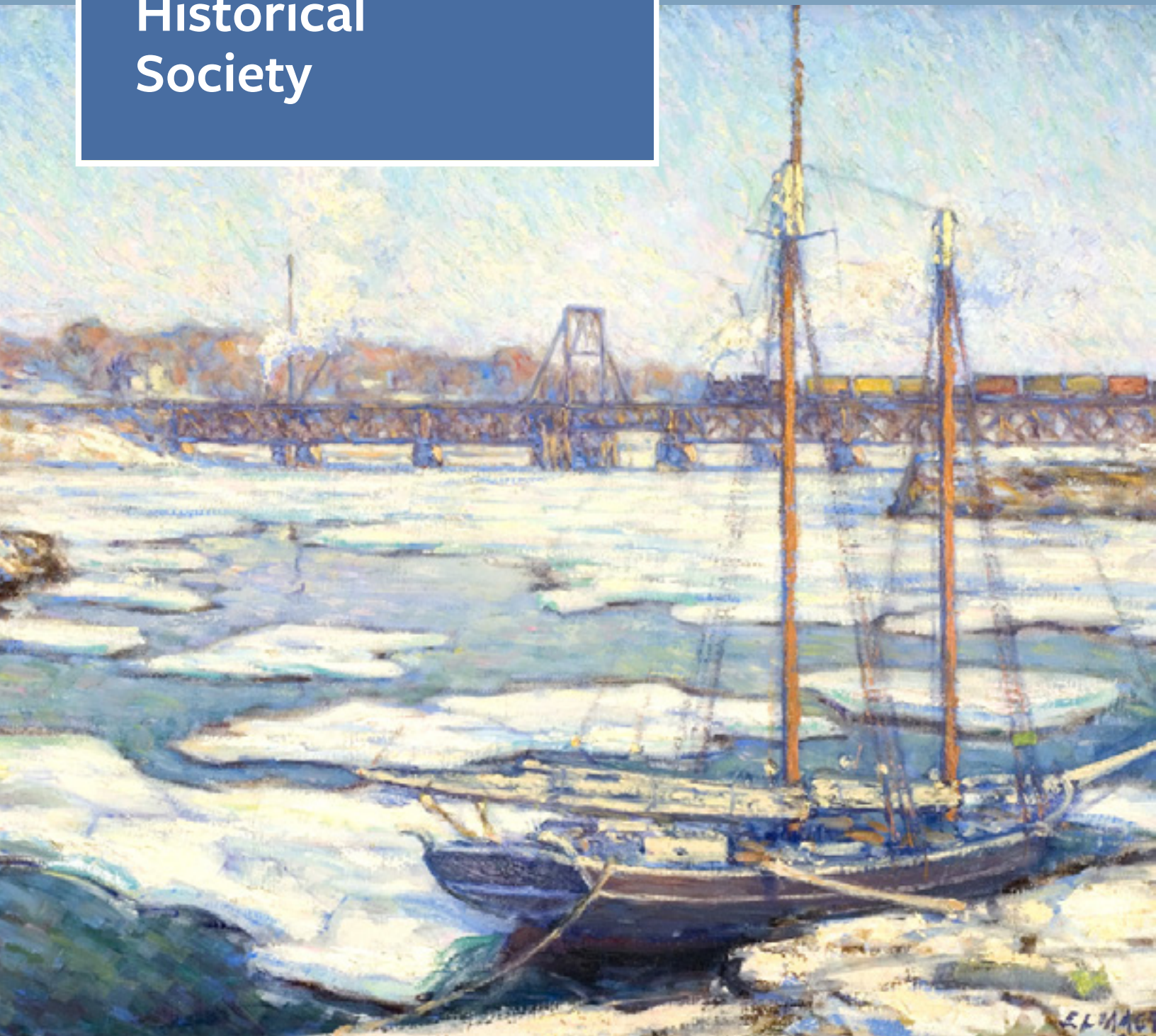


Table of contents



From the Executive Director & Board Co-Chairs	3
Highlights of the Year in Pictures.....	4
Exhibitions Recap.....	8
Rediscover Greenwich.....	10
Preservation & Stewardship.....	11
Shaping a Future Historian	12
Vanderbilt Society.....	13
Donor Spotlight : Tom Galvin.....	14
Greenwich Treasures	15
Gifts to the Archives	16
Collection Wishlist	17
2024-2025 Treasurer's Report	18
Annual Giving.....	19
Membership and Annual Fund	21
Special Event Donors.....	27
Gifts in Honor & In Memory.....	30
In-Kind Donations.....	31
Board & Staff	32
Board Committees.....	33
Leadership Committees	34
Volunteers.....	35

Front cover: Elmer Livingston
MacRae (1875-1953) *Schooner in
the Ice*, 1900, Oil on canvas

Inside cover illustrations:
Morgan Fackelmayer

letter

from the Executive Director and Board Co-Chairs



Dear Member and Friend,

The year 2025 was an exciting one for Greenwich Historical Society. We are grateful for this opportunity to reflect on the accomplishments made possible by our remarkable supporters, staff, and volunteers. In addition to providing a financial snapshot of the fiscal year which ended June 30, 2025, this annual report highlights the people, initiatives, and contributions that made the year a success.

America 250, the celebration of the nation's semiquincentennial, has been the theme of the year. We launched our programs last winter with a lecture by Museum of the American Revolution President and CEO Scott Stephenson on George Washington's Revolutionary War sleeping and office tent. Our student programs expanded to include *Rebels and Royalists*. Our exhibition *Greenwich During the Revolutionary War: A Frontier Town on the Front Line* won the Connecticut League of Museums Award of Merit. An engaging presentation from award-winning author and maritime historian Nathaniel Philbrick at our annual History in the Making event brought the Revolutionary War's naval ventures to life.

Honoring our long-held commitment to historic preservation, we embarked on a project in the Bush-Holley House that will moderate temperature and humidity to protect the structure and its collections. While this effort requires temporarily closing the Bush-Holley House, upon its re-opening, the enhanced environmental control will not only improve the preservation of the building and its collections, but it also will provide visitors with a more comfortable experience.

It certainly has been an eventful year, especially as we ushered in a new era of senior leadership following the retirement of Debra Mecky, who served as Executive Director & CEO for three decades and whom we honored at our annual History in the Making event. Dr. Mecky's dedication to this institution has provided a solid foundation for a bright future.

From our outreach to the K-12 school community, to our family programs and adult education, and to the special events that bring us together, our supporters make all possible. Thank you! We look forward to you joining us in 2026 as we continue to celebrate America 250, Greenwich history, the arts and design. Among the 2026 programs are two new lecture series—*Peopling Greenwich* and *Our Founding Documents*—as well as an exhibit showcasing costumes not on view for over thirty years—*Fashioning America: 200 Years of Greenwich Style*. Stay tuned!

For all the latest information, please see www.greenwichhistory.org, and follow us on Facebook or Instagram @greenwichhistory. See you on campus!

Carol Cadou

Executive Director & CEO

Alexandra DalPan Cumiskey

Co-Chair, Board of Trustees

Catherine Tompkins

Co-Chair, Board of Trustees

2025 Highlights



America 250

We kicked-off our celebration of **America 250** with an exhibition and lecture series examining the impact of the Revolutionary War on the people of Greenwich and the region.



Rebels & Royalists

Our New school program *Rebels and Royalists* received rave reviews from teachers for its alignment with curriculum and the benefit for students to experience history "right in our backyard".

January

February

March

My Story, Our Future

We hosted the 4th annual student-curated exhibit of family oral histories and artifacts for the *My Story, Our Future* project with the India Cultural Center and the Asia and Asian American Studies Institute at UConn.



Collaborative presentation

A **collaborative presentation** with Fairfield Art Museum and the Bruce Museum explored early modern American artists through their groundbreaking portrayals of the Connecticut landscape.



Rediscover Greenwich



Local residents gained new insights into our town's history through **Rediscover Greenwich** walking tours and art installations—a new creative partnership with Untapped NY.



April

May

June



Spring Fete

We celebrated contemporary design at our annual **Spring Fete** featuring legendary style icon Aerin Lauder in conversation with *Town & Country Magazine's* Stellene Vollandes on her book *Living with Flowers*.

Juneteenth Festival



The community gathered to reflect on our nation's history, memorate emancipation, and celebrate together at our second **Juneteenth Festival**.

Music on the Great Lawn



A community favorite and summer highlight, the **Music on the Great Lawn** concert series drew record crowds to enjoy local bands and revelry.



July

August



Art & History Camp

Children entering grades 2 - 8 learned about the past while exploring the many facets of the Colonial era and the Cos Cob art colony in our collections and around the campus at **Art & History Camp**.

September

Time Travelers KidStudio

Kids under 12 explored our local history, art and culture through guided interactive crafts and activities in the **Time Travelers KidStudio**.



Greenwich Landmarks

The **Greenwich Landmarks Recognition Program** recognized local houses of architectural and historical distinction, saluting the owners who preserve these historic properties.





Inspiring American Impressionism

The Holley Boarding House: Inspiring American Impressionism opened as the second in an award winning three-part exhibition series that kicked off in fall 2024 to explore the impact of the American Revolution in Greenwich. The third exhibition follows in April 2026.

Story Barn

Taking inspiration from the Holley boarding house exhibition, our **Story Barn with Bonnie Levison** theme was *This Old House*. Storytellers shared personal memories as we explored their significant experiences and the role of old homes in our community.



October

November

December



History in the Making

We celebrated Greenwich's art & maritime history and paid tribute to retired Executive Director & CEO Debra L. Mecky for 30 years of visionary leadership with the **History in the Making** award.



Holiday Tea with the Holleys

After a walking tour of the grounds and a visit to the Holley boarding house exhibition, guests enjoyed a **Holiday Tea Party** inspired by the traditions of the Holley family with live harp music.

Year in Review

EXHIBITIONS 2024-2025

Kathy Craughwell-Varda, Senior Curator

In 2025 the Greenwich Historical Society presented a record-breaking four exhibitions, two of which were part of our three-part series commemorating the 250th anniversary of the Declaration of Independence. When additional opportunities arose, we embraced the chance to mount two more exhibitions: one temporary in conjunction with the *Re-Framing 95* interactive programs and walking tours; and the other in the Permanent Collections gallery honoring Susan G. Larkin and her generous donation of artworks by Cos Cob art colony artists. These exhibitions were made possible through the generous funding provided by our members and donors. Sally Lawrence, supporter of the Capital Campaign Exhibition & Program Fund said, “It has been my honor to chair our Collections Committee for the past three years. Through this work, we gain insight into our collections and exhibitions, which open windows into Greenwich History for our community and beyond. Larry and I are proud to support them.”

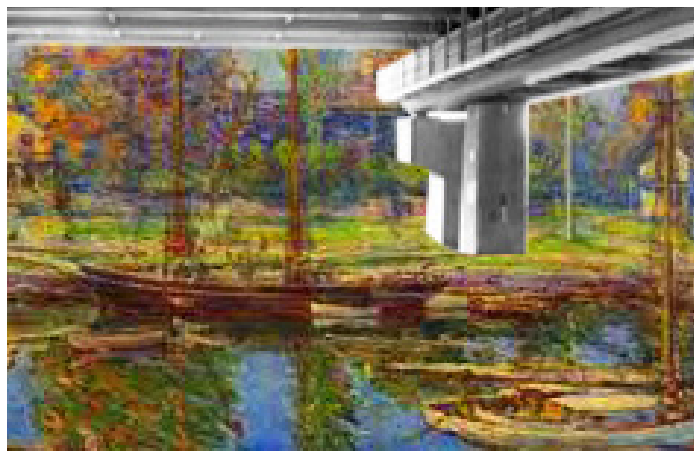


Greenwich During the Revolutionary War: A Frontier Town on the Front Line

October 16, 2024 – June 29, 2025

The first in a three-part series of America 250 exhibitions, *Greenwich During the Revolutionary War* presented a fresh look at the impact of the war on our former frontier town - where residents found their safety and livelihood at risk whether they chose to support American Independence, remain loyal to King George III or claim neutrality.

Made possible by donors to the Greenwich Historic Trust annual fund.



Re-Framing 95

April 17 – August 10, 2025

Inspired by the words of American journalist, Lincoln Steffens, when he encouraged the members of the art colony to embrace the modern changes to the Cos Cob landscape, this exhibition highlighted artworks by members of the Cos Cob art colony who incorporated the railroad bridge in their paintings and etchings. Reproductions of these artworks were manipulated by artist Aaron Asis to show these works might have looked if I-95 existed in the early 20th century.

Made possible by a generous anonymous donor, in partnership with Untapped New York.



Rediscovering the Cos Cob Art Colony: A Tribute to Susan G. Larkin

Opened September 25, 2025

In 2025 the Historical Society received the final artworks that were part of a promised gift from Susan G. Larkin. This long-term exhibition in the Permanent Collections gallery honors Dr. Larkin's lifelong work to rediscover the Cos Cob art colony and bring attention to the Impressionists who gathered at the Holley boarding house. It includes items from her recent donation, as well as artworks and books she donated to the Historical Society over thirty years.

Exhibition and catalogue generously sponsored by Josie Merck.



The Holley Boarding House: Inspiring American Impressionism

October 8, 2025 – March 8, 2026

The second in a three-part series celebrating America 250, this exhibition explores how Josephine Lyon Holley and her daughter Constant Holley MacRae were entrepreneurs who created an environment at the Holley boarding house that attracted the founders of American Impressionism and became the home of the Cos Cob art colony, the first Impressionist community in Connecticut, and among the earliest in the nation.

Major support for this exhibition generously donated by:

Anne Barton and Tom Galvin and Sally and Larry Lawrence, with additional support from the Blavatnik Family Foundation, Isabel and Peter Malkin, Debbie and Russ Reynolds, Lucy and Lawrence Ricciardi, Davidde and Ron Strackbein and Dave Williams.



Rediscover Greenwich: Bringing History to Life

Lauren Ackerley, Assistant Director for Education



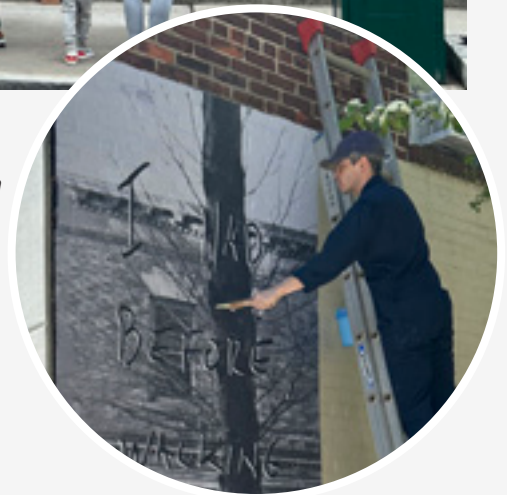
In the spring of 2025, the Greenwich Historical Society launched a creative partnership with Untapped New York to enliven our public programs. In April and May, we produced two special guided tours led by Untapped NY's Chief Experience Officer Justin Rivers complemented by Aaron Asis' art installations. These enriching programs prompted the Greenwich community and beyond to take a fresh look at how the landscape affects the history of their hometown.



The first program, *Re-Framing 95*, offered a guided tour of the lower landing, Bush-Holley House, and the Historical Society's Permanent Collections Gallery. This tour inspired visitors to better understand how infrastructures like the rail bridge influenced the art of Cos Cob Impressionists at the turn of the 19th century. A series of floating empty gold frames strategically placed throughout the campus drew contemporary parallels as to how I-95 might be an artistic inspiration today. A complementary exhibit in the Permanent Collections gallery presented artistic renderings imagining how Cos Cob artists, such as Childe Hassam, might have depicted the current landscape and highway.

The second program, *Rediscover Greenwich Avenue*, journeyed offsite onto bustling Greenwich Avenue. Leading participants from Steamboat Road up the Avenue, the tour shared insight into the

street's evolution, highlighting the surrounding buildings as a living townscape. The tour was accentuated with four distinctive murals by artist Aaron Asis that enlarged archival photographs from our collection embellished with historic quotes from Greenwich residents. The tour concluded at the Greenwich Arts Council with an interactive exhibit entitled *Two Way Street*, which encouraged visitors to write their (re)discoveries on reproduced mural panels.



Fulfilling our Mission: Preservation and Stewardship

Melissa Houston, Director of Education



As a core feature of the Greenwich Historical Society's collection, the presentation of the National Historic Landmark Bush-Holley House will be an ongoing focus in the coming months.

Our top priority is addressing the fluctuations in temperature and humidity in the historic house that affect our ability to care for the art and artifacts on view to visitors. Hygroscopic shock, for example, is the result of abrupt swings in relative humidity that cause particular damage to objects made from wood, paper, or paint. These materials tend to absorb and release moisture such that frequent shifts in the humidity can cause the materials to warp, flake or bend. Updating environmental controls is critical to maintaining the irreplaceable works of art on display in the house including "*Clarissa*" by Childe Hassam. Every visitor to the Bush-Holley

House learns about the importance of our work to preserve our local history and cultural heritage.

The lack of air conditioning in the house can also be uncomfortable for summer visitors. The opportunity to update the environmental controls will provide the added benefit of an enhanced visitor experience to better meet the interests and needs of our audiences.



In celebration of America 250, Bush-Holley House will re-open in 2026 with a tour that will recount the the challenging choices faced by the Bush family during the American Revolution.

IMPACT:

Shaping a Future Historian

Olivia Luntz, Manager of Education & Outreach

From her first visit to the Bush-Holley House as a local student to leading field trips as a docent directly out of college, lifelong Greenwich resident Olivia Luntz's reflections are an invaluable resource and a window into how early museum experiences can shape our individual communities, our future audiences, and our future museum leadership.



In 1900, *Harper's Bazaar* published an article by Elizabeth Young about the hidden “Arcadia” in Cos Cob, which had begun to develop a reputation among artists in New York. Young reflects on the rare and cherished community the artists staying there created each summer and how their experience in Cos Cob impacted their artistry and their lives. Reading the article 125 years later, while researching for our current exhibition focusing on the Holley boarding house, I was struck by Young’s remark, “once a Cos-Cobber, always a Cos-Cobber.”

Having grown up in Cos Cob, her words resonated with me. Just as the lives of the American Impressionists were influenced by their summers spent in the Bush-Holley House, my childhood was shaped by having the Bush-Holley House right in my backyard.



The grounds of the Historical Society were the backdrop to field trips, visits with my Girl Scout troop, family bonding at the Scarecrow Festival, and summer Art and History camp. As an adult, I feel so fortunate to have had my interest in history nurtured by not only the dedicated teachers at Greenwich Public Schools but also the educators at Greenwich Historical Society, who made history immersive and distinctly connected to the community in which I lived.

This appreciation for history led me to study it at Amherst College, and my love for local history brought me back to Cos Cob after graduation as a docent. Now, in my role as Manager of Education & Outreach, I have the joy and privilege of educating thousands of students and adults on Greenwich’s unique history. My most gratifying moment of the past year was when we welcomed Cos Cob School’s fifth graders for our new *Rebels & Royalists* field trip, a program that Director of Education, Melissa Houston, and I developed together. When I saw the students’ awe walking into the Bush-Holley House and their excitement at the opportunity to become “history detectives” during a hands-on workshop, I was brought back to my own elementary school field trip and felt grateful to have a part in keeping this long-standing tradition alive. Although I no longer live in Cos Cob, I feel proud to still, and always, be a Cos-Cobber.

You can shape a lasting legacy that nurtures a love of community through history.

The Vanderbilt Society was launched in fiscal year 2018 to recognize individuals who included a bequest to the Greenwich Historical Society in their estate planning to ensure the organization's sustainability and future success.



VANDERBILT SOCIETY MEMBERS

Connie and Tom Clephane**
Helen and Bruce* Dixon**
Haley and Joseph Elmlinger**
Tom M. Galvin
Jeanine and Robert Getz**
Betty and E. Penfield* James**
Susan G. and James* Larkin**
Isabel and Peter Malkin**
Debra and Carl Mecky**
Debbie and Russ Reynolds**
Davidde and Ron Strackbein**
Valerie Stauffer
Barbara MacDonald**

LEGACY BEQUESTS RECEIVED

Norma Bartol*
William E. Finch Jr.*
John Seel*
Claire and Hugh Vanderbilt*
Paul van der Stricht*
Hedda Windisch von Goeben*
David R. A. Wierdsma*

*Deceased

**Charter Members

Your support of the Greenwich Historical Society can extend beyond your lifetime by making a legacy gift, which can have a profound and lasting impact, shaping the future of Greenwich for generations to come.

If you have a vision for the future that values our shared past and recognizes the Greenwich Historical Society's impact on our community's future, please include us in your estate planning. Your donation, whether through bequests, trusts, gifts of stock, artwork or other assets, will make a significant difference and leave a lasting legacy to support our mission.

Advisory Council

The Board of Trustees authorized the Advisory Council in 2005 to promote the work of the Historical Society in our community and region in furtherance of our mission to inspire people of all ages to make personal connections with the past. The Advisory Council is composed of distinguished community members who serve as ambassadors in support of the Historical Society's mission.

Susan J. Bevan
Carol Crapple
Roberta Denning
John M. Dixon
Patti Fast
Ellen Funck
Regina Pitaro Gabelli
Jessica Guff
Holly Hall
Gray Hampton III

Anne Harrison
Thomas F. Hartch
Christopher C.
Holbrook
Kate and Albert
Laverge
Bonnie Levison
Josie Merck
John E. Nelson
David G. Ormsby

Louise Puschel
Russell S. Reynolds Jr.
Lawrence R. Ricciardi
Deborah and
Charles M. Royce
Susan Shanks
Scott Smith
Valerie Stauffer
John L. Townsend III
Dave Williams



“Why I Give” donor spotlight: **Trustee Tom Galvin**

Interviewed by Naomi Long, Development Associate

NL: What drew you to the Greenwich Historical Society?

TG: My children’s history teacher was very enthusiastic about the programs offered at the Historical Society. They know how much I care about history and when they shared their excitement about visiting Bush-Holley House it immediately pulled me into embracing this fine institution.

NL: Why do you care about history?

TG: It must be part of my DNA. I was six when I first went to Colonial Williamsburg. I grew up in Baltimore and frequented Fort McHenry and once was given a flag that had been raised there by my mother and a senator. Later, as a trustee at the Clark Art Institute in Williamstown, Massachusetts, I had a lot of exposure to Impressionist art. The Historical Society brings all these aspects together.

NL: Why do you feel it’s important to support the work of the Greenwich Historical Society?

TG: I believe it’s a foundation of our society to understand our history. The past is the key to the future, and the Historical Society is truly the main custodian of all Greenwich history. Some of it is messy, some is amazing. An educated community builds greater strengths within the overall society.

NL: What would you say is your favorite program or service to support?

TG: Special exhibitions and lecture programs are particularly important to me. I like how we’re also leveraging other institutions such as the *LIFE: Six Women Photographers* exhibition on loan from New York Historical. I think collaboration makes sense in a resource-constrained world, finding opportunities to partner with other historical societies and art institutions. And on a lesser scale, I am a walker, so I thought the walking tour that Untapped New York did on Greenwich Avenue with the murals was phenomenal.

NL: What do you hope to accomplish through your philanthropy?

TG: Mainly, investing in our future. Expanding awareness of local history to inspire school children as it did my own. We really need to embrace the younger demographic, because the sooner they are engaged, the longer they are involved.

NL: If you were to talk to someone else about giving to our organization, what would you tell them?

TG: Start at whatever level you’re comfortable with, because I think once you take part in the array of programs that take place at the Historical Society, you’ll gain deeper insight that will ultimately inspire you to donate more in the future. You’ll realize it’s not only an investment for yourself, but an investment in the community.

NL: And just on that, why Greenwich? How does the story of Greenwich impact the national story?

TG: Greenwich was a major thoroughfare during the American Revolution. Truly, our roots of independence began in this specific community. It’s a phenomenal history. Our town is over 350 years old, and we continue to be great stewards of this history.

NL: Can you share an example of how you feel seeing your work and support being put to work?

TG: I’m incredibly excited about America 250 here in Greenwich, our work to bring the Dutch tall ship Oostershelde to Greenwich Harbor on June 27th and 28th and the public celebration of the town. I think this truly will create a much broader awareness of the significant contributions that the Greenwich Historical Society makes to the community on a regular basis. This is a special year and we’re going to party like it’s 1776!

Greenwich Treasures

Gifts to Museum and Archives Collections

July 1, 2024 – June 30, 2025

The **Museum Collection** is comprised of objects that document the material culture of present and former inhabitants of Greenwich and its region. Particular emphasis is given to items connected to the history of the Bush-Holley Historic Site or those useful to its interpretation. Objects include, but are not limited to, items associated with Greenwich people, places or events; fine and decorative arts; and maritime, agricultural, industrial and domestic artifacts that reflect the activities of the Bush family and of members of the Cos Cob art colony. **The Archives Collection** preserves our past for future generations. We acquire, preserve and make available to the public original documents and publications about important aspects of the history of the Town of Greenwich from its founding to the present. These can include original letters, diaries, scrapbooks, minutes, reports and publications such as books, magazines, menus, brochures, flyers and campaign literature. On behalf of current and future students, researchers and scholars, we express our sincere appreciation to all who have contributed to these collections.

GIFTS TO THE MUSEUM COLLECTION

GIFT OF SUSAN G. AND JAMES T. LARKIN



*Portrait of Ellen Brown
(Mrs. Elijah Brown)*, Theodore
Robinson, 1881, etching

Windy Day, John Henry
Twachtman, 1888-89, etching

The Dock, Bridgeport, John
Henry Twachtman, 1888-89,
etching

The Old Mill, John Henry
Twachtman, 1889, etching



GIFT OF JOHN SANNA

Evening gown worn by Bridget Loughlin,
c. 1900, silk and velvet



Serving the Guests, Genjiro Yeto,
1905, watercolor

Windswept, Walter Clark, undated,
oil on canvas

GIFT OF MR. AND MRS. RUSSELL REYNOLDS

Mommie Napping, Elmer Livingston
MacRae, 1908, gouache and ink



Gifts to the Archives

Louisa Stone

Report of the Selectmen's Land Bank Committee, September 4, 1986.

Dianna Greene

Raynal C. Bolling Sr. boot pull, shaving kit, uniform buttons, book titled *Getting Together* by Ian Hay, copy of letter sent to Uncle George (Phillips) 5 days before Raynal Sr. was killed; Raynal C. Bolling Jr. scrapbook and photos related to boat trip.



Ruth Wescott Duncan

Stamp album assembled by Isaac Ferris, ca. 1886, possibly started in 1889.

Rebecca "Becky" Whipple

Rosemary Hall yearbooks "Answer Books" from 1955 and 1956.

William Lauricella

The Green Witch (Greenwich High School literary publication): December 1942, December 1943 (2 copies), May 1943, May 1944 (2 copies), December 1944, May 1945 (2 copies), December 1945, May 1946 (2 copies), December 1946, May 1947 (2 copies); 1912 Sanborn map; 1920 Sanborn map, 1942 Dolph & Stewart Atlas.

Elizabeth Shopovick

Typed genealogy of Sandreuter/Potter and related families. Prepared by Stuart Sandreuter, July 18, 1944.

Sam Romeo

North Mianus scrapbook and motion picture film of North Mianus Community Center ca. 1940.

Alverd Stutson

Willowmere booklet and foldout showing dogs at Willowmere Farm, Sound Beach, Conn.

Marjorie "Mimi" (Stevenson) Turner

World War 2 correspondence from George M. Stevenson to his wife Mary Jane Wason Stevenson and his 4 children; Correspondence related to the home at 218 Milbank Avenue that was built by the donor's great grandfather Rufus Raymond, photographs and other items related to the family.

Katey Goodwin

Publicity photos: 1957, January, 1958 and September, 1961; Photo of Sea Rune, 1957; Christmas card from Sea Rune, 1959; Christmas card, 1972; Gospel of St. John, from Grace Seton, 1958; envelope, 1968; newspaper clippings: This Week magazine, July 8, 1956, The American Weekly, February 15, 1959.

Barbara Freeman

Directories of Greenwich Antiques Society/Greenwich Decorative Arts Society: 2000-2001, 2005-2006, 2006-2007, 2007-2008, 2008-2009, 2009-2010, 2010-2011, 2011-2012, 2012-2013, 2013-2014, 2014-2015, 2015-2016, 2016-2017, 2017-2018, 2018-2019, 2019-2020, 2020-2021, 2021-2022, 2022-2023; brochure for Historical Society of the Town of Greenwich trip to Charleston, April 1994; Publication list from Peabody Essex Museum.



Judith Weeks Padgett

Greenwich Hospital School of Nursing and related items from donors mother Sally Olmsted Weeks, R.N. Program for 50th Anniversary of the School of Nursing at Greenwich Hospital (1956); Invitation to graduating exercises (1945); U.S. Cadet Nursing documentation; Name badge (Sally Weeks, R.N.); photographs and newspaper clippings; U.S. Department of Defence Medical Self Help Training Course certificate (1965); Survival in a Nuclear Attack booklet (1960).

Catherine Horn

Pandemic Pondering. A Poetry Collection By Catherine Horn, Lulu Lane Press, 2024.

Kate Laverge (on behalf of Susan Larkin)

Research files/books of scholar and author Susan Larkin related to Cos Cob art colony.

Connie Clephane; Joy Rendahl

2 Knollwood Garden Club photo albums covering period 1964-2004; Promotional posters/cards from 2022.

Andrew Melillo

Original Photos of Bruce Park and Greenwich Harbor from ca. 1935; Oversized photo of the Anchorage from 1977 by photographer Christopher Semmes.

Jacob Maloney

William H. Wallace Mortgage Deed, received for record July 19, 1890 recorded in Greenwich Land Records in Book No. 63 at page 79.

Gail Wang

14 photo albums with Dorothy Hamill articles from 1976-2022; 8 Dorothy Hamill posters; 9 hardcover books (Dorothy Hamill's biography and autobiography; 1 Dorothy Hamill doll from 1977.

Anne Semmes

Greenwich Pioneer Aviators Excerpts from the Life of Marian Engle Cummings (DVD) TRT 11:17; The Life of Marian Engle Cummings 1891-1984, Creative Video Corporation, 9 Mott Avenue, Suite 108, Norwalk, CT 06850 (DVD).

Linnea Stenberg (on behalf of Garden Club of Old Greenwich)

Club material spanning years 1977-2024. Includes yearbooks, flower show records, awards, centennial publicity, annual reports.

Patrick Scalisi

Books by cartoonist Mort Walker: *Backstage At The Strips*; *The Lexicon of Comicana*; *Beetle Bailey Celebration*; *The Best of Beetle Bailey*.

Georgia Weister; Art Mendoza-Ballesteros

Book *Darling, Yours Always, The WWII Letters of Peggy and George Steiner, Italy 1944-1945, Volume III* compiled, edited, and annotated by Art Mendoza-Ballesteros. Copyright 2024, Mind of Mandrake Publishing, collection of letters between Peggy and George Steiner documented in the book.

John Seel

Mianus Review, North Mianus School, Spring, 1968, Vol.18, No. 1; Mianus Review, North Mianus School, Spring, 1969, Vol. 19, No. 1; Ex Multis (Greenwich Country Day School), 1975; Ex Multis (Greenwich Country Day School), 1976.

Anne Malone

Photo of Greenwich Hospital Nursing School Graduation, 1950 featuring Magda Jensen.

Deborah Beers-Jones

Husted, Green, and Willson family ephemera. Includes photographs, correspondence, newspaper clippings, photocopies related to genealogy, a book *Little Frankie And His Cousin* by Mrs. Madeline Leslie circa 1860, child's school workbook.



Michael Gordon

Bolling family photographs and related material.

Will Kies

Postal documentation related to Banksville area, 19th century.



Collection Wishlist

Christopher Shields, *Director of Library & Archives*

The Greenwich Historical Society collects a variety of material that captures the history of the town to ensure it is maintained for future generations. This includes photographs, correspondence, business and organizational records, maps, and ephemeral items like event programs. But this doesn't mean we lock this material away to preserve it; we take steps to protect fragile historical sources while also making them visible and accessible.

Our goal is to help our members and visitors make connections and gain new understanding about the history of their family, their neighborhood, and their home. The joy of exploration and discovery is evident when visitors find new details and answers to their questions in historical sources; it demonstrates the importance of the Historical Society to the community and helps people understand why their support is vital.

The archival collection at the Greenwich Historical Society has been

developed over the past 94 years primarily through the generous donations of community members who recognized the importance of their family, business, or organizational documentation. They realized that these materials had significance beyond their immediate families or institutions and that the Historical Society was the appropriate permanent repository.

It is very important that this trend continues. History is being made every day. Most of us have a variety of items that can help capture details about recent events that will be valuable for researchers in the future. In particular, the Historical Society is interested in documentation of people, businesses, local organizations and events from the second half of the 20th century (roughly the period after World War II). This time period is not as well represented in the collection as it should be and we look forward to partnering with the community to fill in the gaps.



Pictured above are some fine examples of recent 20th century acquisitions. The Eisenhower and Nixon campaign pins harken back to a time when such tangible objects played a greater role in fostering name awareness with potential voters.



The "smile pins" were distributed at the Keleshian family's Carnival Card Stop on Greenwich Avenue ca. 1970s. They were a fun, creative way to spread good cheer and foster an enduring connection to a popular local business.



2024–2025 Treasurer's Report

Heinz Maeusli, Treasurer

Please see here highlights of our financial year closed on June 30, 2025. The financial statements and Form 990 are available on our website and in hard copy at the Greenwich Historical Society.

Financial Year (FY)25 shows mixed results. We began the quiet phase of a capital campaign to introduce new educational programming while at the same time preserving our historic campus and crown jewel, the Bush-Holley House. Fundraising for these initiatives began just prior to the end of our FY and was off to a promising start. Contributions accounted for in FY25 were \$1M. Our balance sheet shows total assets of \$25M compared to \$23.54M in FY24.

Total revenues including assets released from restrictions amounted to \$1.94M compared to \$1.88M in FY24, an increase of \$65K. As in past years, we had our very successful signature fundraising events, the History in the Making award dinner honoring Scott Mitchell and the Mitchell Family, and the Spring Fete designer luncheon featuring Aerin Lauder.

Total expenses of \$2.59M were \$272K higher than in FY24. The main reasons for this increase were the use of consultants for our capital campaign and executive director search, expenses for outsourced staff, and increased maintenance costs for buildings, grounds, and equipment.

The resulting change in net assets from operations was a loss of \$651K compared to a loss of \$445K in FY24.

The result from non-operating activities was \$271K which is \$297K better than in FY24. Very strong investment returns and a normal depreciation total, unlike in FY24 when we had an exceptional depreciation charge of \$169K due to asset disposals, explain this improvement.

The change in net assets with donor restrictions was \$1.77M compared to \$228K. Overall change in net assets was \$1.39M compared to a loss of \$243K in FY24.

	Year Ended June 30, 2025 (Audited)	Year Ended June 30, 2024 (Audited)
Operating Activities		
Revenues & Assets Released		
Contributions, Memberships & Grants	671,842	622,147
Fees, Tuition and Admission	78,273	142,728
Special Events (net)	476,638	545,750
Store Sales, Rental & Other Income	238,568	244,708
Assets Released from Restrictions	475,929	320,764
TOTAL REVENUES & ASSETS RELEASED	1,941,250	1,876,097
Functional Expenses		
Program Services	1,991,132	1,895,835
Management and General	245,910	145,945
Development	355,307	278,946
TOTAL FUNCTIONAL EXPENSES	2,592,349	2,320,726
CHANGE IN NET ASSETS FROM OPERATIONS	(651,098)	(444,629)
Non-operating Activities		
Investment Returns	676,623	546,912
Depreciation**	(405, 843)	(593,615)
Satisfaction of Capital Restrictions	–	20,246
Result from Non-operating Activities	270,780	(26,457)
Change in Net Assets with Donor Restrictions	1,770,462	228,060
CHANGE IN NET ASSETS	1,390,144	(243,026)
Assets		
	June 30, 2025	June 30, 2024
Cash & Cash Equivalents	278,441	74,390
Other Current Assets	499,097	116,095
Investments	9,141,034	8,081,806
Property, Equipment & Furnishings—net of depreciation	15,108,007	15,270,397
TOTAL ASSETS	25,026,579	23,542,688
Liabilities and Net Assets		
Total Liabilities	169,595	75,848
Net Assets		
Without Donor Restrictions		
Board Designated	1,762,048	1,993,260
Unrestricted	15,936,974	16,086,080
With Donor Restrictions		
Time or Purpose Restricted	2,170,483	1,000,021
Perpetual Endowment (excluding appreciation)	4,987,479	4,387,479
TOTAL LIABILITIES AND NET ASSETS	25,026,579	23,542,688

**FY24 Includes \$169,000 of depreciation due to disposal of assets

The Historical Society is grateful for your continued support of our mission.

ANNUAL *Giving*

July 1, 2024 - June 30, 2025

Major Gifts and Greenwich Historic Trust

Greenwich Historical Society thanks the generous contributors to our Major Gifts program, including the Greenwich Historic Trust. These donors, foundations and corporate sponsors support the Historical Society's public programs, preservation of the National Historic Landmark Bush-Holley House, education programs for all ages, bi-annual exhibitions, research services, and our many print and online publications and resources. Donors enjoy all the privileges of Greenwich Historical Society membership.

Leadership Circle

\$25,000+

Anne Barton and Tom Galvin
Emily and Len Blavatnik
Sherry and Cort Delany
Ramsey Frank
Icy and Scott Frantz
Kyu Han and Heinz Maeusli
Jean and David Wallace Foundation
Isabel and Peter Malkin
Arlene and Reuben Mark
Vilma and Dick Matteis
Debbie and Russ Reynolds
Lucy and Larry Ricciardi
Davide and Ron Strackbein
Hugh Vanderbilt
Dave Williams

Preservationists

\$10,000 – \$24,999

Allatt-Walsh Foundation
Cynthia and Richard Blumenthal
Alisa and Curtis Brockelman
Jun and Matt Brumberg
Connie and Alan Buerger
Anne Buford
Melinda and Brian Carroll
Cynthia Chang and Brian Scanlan

Allison and Tim Coleman
Rebecca Colin
Jill and John Coyle
Alexandra and Peter Cumiskey
Barbara and Ray Dalio
Sarah and Adam Dolder
Jeanine and Robert Getz
Connie Anne and Jeremiah Harris
Susannah and Jim Heyworth
JP Morgan Chase & Company
Sally and Larry Lawrence
Mary Ellen LeBien
Laura and Scott Malkin
Josie Merck
Mimi and John Henry Moulton
Anne and Chuck Niemeth
Indra and Raj Nooyi
Anne Ogilvy
Regina Pitaro and Mario Gabelli
Mary Quick
Deb and Perry Robinson
Jennifer and Michael Shannon
Dorothy Stapleton
Wendy Stapleton
Alease and Paul Tallman
Catherine and David Tompkins
Maree and John Townsend
VanderHorn Architects
Gary Wendt

Collectors

\$5,000 – \$9,999

Holly and Matt Cassin
Connie and Tom Clephane
AnnaMaria DeSalva
Lauren and Richard duPont
Haley and Joe Elmlinger
Carrie and Chip Emery
Lisa and Chris Errico
Farrow and Ball
Shirin and Frederic Fekkai
First Bank of Greenwich
Leslie and Tom Foley
Barbara and Joe Havranek
Alexandra and Cody Kittle
Kat and Peter Mattis
Linda and Vince McMahon
Debra and Carl Mecky
Scott Mitchell
Mallory and Greg Molenkamp
Kathleen Rudy
Leigh Ann and Robert Ryan
Shelby and John Saer
Heather and John Sargent
Tri Post Capital Partners LLC
Sue Ann Weinberg
Aerin Zinterhofer
Martha and Charles Zoubek

Historians

\$2,500 – \$4,999

Andraab NYC
Kimberly and Neil Augustine
Veronica and Anson Beard
Elizabeth and Ethan Bing
Breast Cancer Alliance
Chasseur de Mode Et Maison

Betsy and Michael Cherkasky
Lyn and Lang Cook
Hope and Thomas Crosson
Carolyn and Mo Cuniffie
Mary Jane and Peter DaPuzzo
Patti Fast
Ellen Funck
Lauren and Gray Hampton
Melissa and Carney Hawks
Claire and Carlos Hernandez
Elizabeth Hubbell
Lyn Hurlock
Alyssa and Tom Keleshian
Bunny Lukas
Patricia Lunka and Gary Berkman
Susan Lynch
Susan and Robert Morris
Nancy E. Barton Foundation
Jana and Brian Neff
Nancy and Morris Offit
Barbara Ormerod-Glynn
Lindsay and David Ormsby
Emma and Mark Pennington
Jennifer Port
Natalie Pray
Alexandra Robertson
Deborah and Chuck Royce
Heidi and Scott Smith
TD Bank
Victoria and Mike Triplett
YWCA of Greenwich

MEMBERSHIP

& Annual fund

Greenwich Historical Society thanks the following donors whose membership and corporate sponsorship enables the Historical Society to fulfill its mission to preserve the history of the community for future generations. We extend our deepest appreciation to all.

Benefactors

\$1,000 – \$2,499

Libby and Robert Alexander
Liz Victory and Scott Anderson
Rebecca and Darren Anikstein
Lilly and Whit Armstrong
Backcountry Mercantile
Jeannemarie and Bill Baker
Bear Creek Farm
Courtenay Benedict Carella
Nancy and Jamie Better
Courtney and Laird Bieger
Nina and Jay Bliley
Scottie Bonadio
Anne Louise and Matt Bostock
Jacki and Brendan Brew
Briony Raymond
Tiffany and Don Burnette
Laure Casale
Patricia and John Chadwick
Charles Strolin Inc.
Kate and Jim Clark
Megan and Andrew Clark
Judy and Chris Collins
Contadino Architects
Cornelia Cogswell Rossi Foundation
Lauren and Chris Corrinet
Carol Crapple
Bea Crumbine
Nancy Cuniffe
Felicite and Suhas Daftuar
Anne and Alec Dawson
Kristina Downey

Julia and Tom Dunn
Katelyn and Brendan Dyson
Edgehill
Elizabeth Sales Jewelry
Lauren Evans
Everything is Rosey
Fahey Fine Jewelry
Vivian and Roger Farah
Douglas Fenton
Amanda and Alexandre Gaudet
Heather and Andrew Georges
Carolyn Gilbert
Gingerbitz Coffee
Elizabeth Groeninger
Jessica Gruss
Ren and Spencer Harman
Christine and Douglas Harmon
Briana and Gregory Hart
Sophie and William Hood
Howard and Gay Inc.
Katie and Peter Juhas
Lori and Marc Kasowitz
Kristin and Michael Kelly
Joni and Kevin Kimberlin
Samantha Knapp
Richard Kriskey
Jo Carole and Ronald Lauder
Cynthia Leaman
Alison Levinson
Evelyn Lorentzen Bell
Joey Magliocco
Marcia Selden Catering & Event Planning
Marfa Stance

Schuyler and Patrick McBrien
Adelaide McManus
Michino Paris
Barbara and James Moltz
Ellen and Richard Moman
Dinny and Lester Morse
Sandra and Randall Motland
John Nelson
Harley and Stephen Osman
Suzanne and Andrew Peisch
Joanna Pisani
Plan A Advisors
Lolly Prince
Candace and Chris Procaccini
RAM Affiliates
Ellen and Richard Richman
Sarah Robinson
Roughan Interiors
Alma Rutgers
Chelsea and Derek Schaeffer
Cathy Schulz
Lauren Schwartz
E. Scott
Christina and Dan Seale
Meredith and Darren Shames
Jean Shropshire
Christine Skaarup
S.N. Phelps Research Institute
Winifred Staniford
Valerie Stauffer
Natalie and Eric Stein
Studio Mason Design Company
The Copper Shed

Membership & Annual Fund

The Mahjong Line
The Salting
Waterstone
Lisa Weinberg
Carolyn and Malcolm Wiener
Tracy and William Yort

\$500 – \$999

Nancy and Joel Altobello
Barbara and James Amen
Cynthia and Ty Anderson
Jenny and Michael Baldock
Sallie Baldwin
Karin and Henry Barkhorn
Eileen Bartels
Bauble Stockings
Esther Beilenson
Amy Berkery
Matthew Bernard
Best in Gourmet
Christine and Stephen Boies
Francesca Bonaiuto
Brooke Boothe
Brave Pudding
Marisa and Matt Brown
Burkewood Road
Eunice and Robert Burnett
Mary and David Burrows
Morgan Caspi
Catch All
Christ Church
Kate and David Chung
Margo and Clayton Cole
Andrea Cross
Susan Cullman
William Deutsch
Rachel Doneger
Valerie Doyle
Patricia and John Dudzik
Julia Ecclesine
Lisa and Thomas Edmundson
Emily and Ashley
Killeen and Joe Faughnan
Fran and James Fogarty
G McGee
Garden Club of Old Greenwich
Cosby George
Elisabeth Giovine
Greenwich Country Day School
Elizabeth and Jordan Haviland

Maureen and David Hays
Karen and Frederick Henderson
Jevera and William Hennessey
Robert Hogan
Colette and Gary Howe
Barbara and Dan Jackson
Jean Forte Vintage Gifts
Judith Kallman
Elizabeth and Charles King
Chris and Bob Kleinert
Catherine Ladnier and Mickey Robinson
Patricia and Mario Lampingnale
Evan Kingsley
Soraya and Arthur Mariel
Cro Martin
Mischa Lampert
Mary and Garrett Moran
Lori and Robert Mulcare
Victoria and James Munsell
Needle Golf
Ross Ogden
Patrick Mele – The Shop
Katerina Pergola
Kirsten and Andrew Pitts
Pologeorgis Fur Fashions
Sally Potak
Kathleen and David Renton
Nicki and Charles Rose
Jane and Paul Shang
Erica and Todd Silverman
Stanton Sweets
Constance and Arnold Stancell
Margaret Stevens
Tenmile Distillery
Vegetable Sweater New York
Susan Weis

Up to \$499

Faris AbiNader
Dana Ackerly
Suzanne Adams
Mary Addington Smith
Caroline Adkins
Claire Ahneman
Valerie Ahneman
Heidi and Steve Aishman
Asghar Alam
Anne Alexander
Peter Alexander
Lynn and Anthony Ambrose
Lisa and John Ancona

Elaine Andersen
Anthony Andriulli
Anonymous
Lynda and Thomas Armbruster
Karolyn Armstrong
Paula and Hector Arzeno
Mary-Ann and Gordon Assing
Lynne and Ted Auch
Martha and John Awdziejewicz
Janice Baird
Pat Baird
Sue Baker
Thomas Balcerski
Joanne Barbieri
Gayle and Christopher Baring
James Barrett
Lucy and John Barrett
Jean and Christophe Bart
Jane and Kenneth Bartels
Hugh Barton
Bastide
Caryl Bate
Olivia Begasse de Dhaem
Elspeth Beier
Leonard Beinstein
Roseann and Scott Benedict
Jeanne and John Bennett
Susan and Marv Berenblum
Anthony Besthoff
Susan Bevan
Barbara and Stephen Bishop
Cathleen and Jeff Blood
Eleanor Bloom
Jane and Ira Bloom
Hsiao-Lien and James Boardman
Robin Bodell
Victoria and John Bolebruch
Tony Bolton
Donya and Scott Bommer
Laura and Daniel Botoff
Joanne and Neil Bouknight
Eleanor and Larry Bowman
Maureen and Tom Boyle
Sarah Boyle
Talia Bradicich
Rosamond and Robert Brady
Dale and Warren Bratter
Colleen Brayer
Ann Brett
Barbara Brickman
Kelly Bridges

Membership & Annual Fund

Heather and Eric Brower
Marissa and Connor Brust
Aida and Silvio Buccieri
Kathleen and Francis Burgweger
Julie and John Burke
Michael Burke
Nancy and Duncan Burke
Elizabeth Burleson
Mary Burr
Jennifer and Theron Burraway
Elaine and Martin Buschmeyer
Elizabeth and John Butler
Margaret and James Butler
Bonnie Caie
Susan and James Calabrese
Libby Cameron
Virginia Campbell
Elena Cantaveo
Jill Capalbo
Virginia Caragol
Gabby Caravella
Susan and Peter Carlson
Joan Carra
Mary L. Carraher
Warwick Carter
Sandra Caruso
Lynne and Anthony Carvette
Judith Chapman
Camille and Andree Chebeir
Sarah Chesters
Cynthia and Hon Cheung
R. David Chiappetta
Dorothy Cholnoky
Christiane and David Citron
Carolyn Cleveland
Wonda and Robert Clyatt
Mary Coakley-Fields
Rita Cody
Susan and Bruce Cohen
Robin Cohen
Ellen and Tony Colasurdo
Meg Cole
Erika Collins
Susan Connal
Elizabeth Connolly
Susan and Kenneth Conover
Jacqueline and John Considine
Kevin Conway
Kymie Cooksey
Betsy and Richard Coons
Hillary and Parker Corbin

Katherine and Janis Cortez
Virginia and John Costaregni
Heather and Kane Cotter
Kate Cowan
Constance Cowen
Michelle and John Cracraft
Lizzie and Geoffrey Craddock
Jean Crocco
Kimberly Crocco
Dominique Crosby
Martha Crowley
Elizabeth Cryer
CT Humanities
Justine Cuff and Ulf Lindahl
Jane Cumming
Julie and Andrew Cummings
Irene and James Cunanan
Helen and Denis Curran
Carol Cusick
Holli Cutting
Andrea Dabney
Diane and David Darst
Dash of Salt Catering
Genevieve and William Davis
Marion Dawson Carr
Lenore de Csepel
Juliette and William Dealy
Dear Annabelle
Barbara Defina
Dave DeJoy
Diana and Lyman Delano
Gina and Warren Delano
William DeLuca
Kyle and David Deneen
John Dent
Barbara and David Detjen
Designing Women
Elizabeth and Lawrence DeVan
Sherry and George Dey
Julie DiBiase
Discount Tactical Supply
Jean and Frank DiVincenzo
Jeanne DiGennaro
Veronica and Charles Dietz
Carol and John Dixon
Gina and Peter Dodge
Ann Donohue
Mary Donohue
Maria Teresa and Luis Hernan Donoso
Jennifer Dott
Anne and Bill Drake

Anne Drake
John Dubaz
Alice Duff
Nancy and Ken Duffy
Duggan Society
Christine Duncan
Kate Duncan
Ruth Duncan
Yuko Dunham
Louise Dunn
Cheryl and Daniel Dunson
Beth Eaton
Stella Economou
Elizabeth Lake
Connie And Everett Elknson
Suzanne and Eric Ellison
Anne and Dermot Elser
Lilian Eng
Arline and Joel Epstein
Barbara Epstein
Sabrina and John Evangelista
Jennifer and David Evans
Charles Fago
Karen Fassuliotis
Esta and Jay Feinsod
Judith and William Ferdinand
Patricia Ferris
Susan Ferris
Cohl Ferris Katz
Meredith and Brian Feurtado
Linda Fields
Connie and Mark Figgie
Lisa and Bruce Figlioli
Mary Findlay
Lynn Finnegan
Patty Fisher
Dina and Josh Fleischmann
Jane Flynn
Wendie Force
John Ford
Kelly and Lars Forsberg
Diane and Edward Fox
Andrew Francella
Pauline and Richard Franck
Patricia Frano
Lynn Friend
Robert Frishman
Claire Furlin
Ali Galgano
Betsy Galindo
Michael Galluzzi

Membership & Annual Fund

Lin Gao	Susan and Carter Harris	Rebecca Jasperson
Miguel Garcia-Colon	Jane Harris	Jacqueline Jenkins
Lynn Garelick	Susan and John Hart	Alexandra Jennison
Gas Bijoux	Gale and Thomas Hartch	Erin Jensen
Michele and Henry Gasiorowski	Robert Harvey	Joey Wolffer
David Gaston	Derek Harvey	Beverly Jomo
Stephen Gates	William Haslun	Joyce and Robert Jones
Gigi Gaudet Clark	Christine Hauck	Mary Julian
Suzanne and Al Gaynor	Bonnie Havery	Rosemary and David Junius
BJ Gedney	Patricia Hayes	Svetlana Kalinichenko
Martha Gendell	Anne and Wesley Haynes	Abby and Eric Kamen
Jane Gering	Sallianne and Thom Healy	Sandy and John Kamen
Jane and Antreas Ghazarossian	Paul Hearn	Patricia and Joseph Kantorski
Avnish and Parul Ghei	Kia and James Heavey	Nancy and John Kavanagh
Janice and Joseph Giancola	Kathy and Doug Heidt	Kaye and Associates
Heather and Kevin Gillespie	Lisa and Marc Heissan	Valerie and Wayne Keeney
Michelle and Jonathan Glass	Donna and Norman Heller	Caroline and Michael Keigher
Diane and John Gollozio	Cyndi Hellstrom and Edwin Conroy	Frank Kelly
Meri Goodman	Caroll and James Henderson	Laura Kelly
Ilse Gordon	Claire Henriques	Easy Kelsey
Judith Goss	Mary Ann Henry	Nancy and John Kent
Laura and William Grad	Deborah Herrington	Carol Kenyon
Annemarie Graham	Deja Hickcox	Irene and Donald Kerr
Joanne Graham	Maria and Carl Higbie	Margaret Kessler
Linda and Anthony Grant	Judy Higgins	Renee and Bill Ketcham
Anne and Clifton Gray	Kaori Higgins	Beverly Keyes
Green Fingers Garden Club	Ivy and Heidi Hillman	Carole Kiachif
Amy Greenberg	Lisa Hodges	Jane Kiefer
Louisa Greene	Louise Hoffman	Kathleen and William Kiernan
Dorothy and Jeffrey Grossman	Julie and Chris Hojlo	Pat and Michael Killeen
Ebba and Georges Grumieaux	Mary Helen and Jeffrey Holzschuh	Emma and William King
Cheryl and Keith Gulner	Barbara Hopkins	Evan Kingsley
Linda Gullotta	Linda and Edward Hortick	Tammy and Nick Kiratsous
Nina Haberli	Jeanne Host	Mimi Kirk
Victoria Hackman	Sharon Houle	Janet Kirwan
Darcy and John Hadjipateras	Genevieve Howe	Marilyn Kitson
Mark Haines	Katherine and Christopher Howes	Betsy Knapp
Mirella and Hadi Hajjar	Kara Huck	Heather Knapp
John Bolling Hall	Robert Hurley	Paul Kollmar
Suzy and John Halloran	Aileen Hutchins	Carmen Konigsbach
Diana and Peter Hamilton	Mary Huyck	David Kosh
Melissa Hamm	Linda and Dov Hyman	Anne and W. Paul Krauss
Jacqueline and William Hammock	Andrea Ingalls	Sarah Kreitman
Susan Hanna	Kenneth Irvine	Betsy Kreuter
Gillian and Randall Hannum	Lauren Irwin	Nancy and Christopher Kristoff
Happiness is Catering	Dawn and David Israel	Beth and Edward Krumeich
Janice and Christopher Harmeier	Annie Itin	Lorraine Labate
Mary Sue and Jonathan Harnett	Evelyn Iversen	Catherine Ladnier and Mickey Robinson
Hilary and Andre Haroche	Robin Jaffee Frank	Nanette and Fred Laffan
Betsy Harper	Jean Marie and Douglas Jamieson	Judith and Chris Lagano
Isabelle and James Harper	Kathleen Jarombek	Pat Larrabee

Membership & Annual Fund

Laura Casale Architect
Lynn and William Lavalette
Kate and Albert Laverge
Hilary Lea
Helene and Alain Lebleu
Vanessa and Gregory Lecorps Riche
Francine LeFrak
Steven Leifer
Victoria and David Leisten
Lauren and David Levine
Susan and Paul Henry Levine
John Liberator
Sharon and Frank Librandi
Naomi Lieberman
Laura Lind
Eleanor Lindberg
Cindy and Paul Lindemeyer
Leah Liptak and Erin Jones
Georgianna and Marc Lissauer
Cricket and Jim Lockhart
Kate and Richard Loh
Nancy Lomazzo
Nancy Long
David Loparco
Renata Lose
Lorain and Allen Lovejoy
Lisa Lowden
Aileen Lowe
Michael Lupo
Barbara Lusk
Katherine and Leonard Mackey
Mary Elizabeth Magnusson
Helen and Brian Maher
Thomas Maher
Cheryl Makrinos
Mary Rose Malchow
Katherine and Mike Maloney
Sally Maloney
Domenica Manuli
Louise and Samuel Marasso
Janet Marchand
Joan and Richard Margenot
Sandra Margoles
June Marks
Catherine and Louis Marquet
Terry Ann and Jonathan Marshall
Gail Martin
Marilyn Marullo
Anthony Marzullo
Marian and Kenneth McAdams
Annsley McAleer
Lauren McCabe

Margery and Stephen McCabe
Megan McCallen
Sue McClenachan
Mary Jane and Rob McCormack
Laura McCormick
Lise and Kevin McDonald
Elizabeth McGehee
Margriet McGowan
Susan McKay
Elisabeth and Joseph McLaughlin
Marie and Aubrey Mead
Jeffrey Mead
Angenette and Robert Meaney
Joan Mendenhall
Suzanne and Howard Merkel
Janice and George Merrill
Monica and Stephen Meskers
JoAnn Messina
Allison Mieloch
Molly Miller
Milton Market
Katharine Minton
Renee and Matt Mitro
Preeti Mittal
Donna Moffly
Rosalie Monahan
Milena Monet
Pam and John Montgomery
Tami and Richard Montier
Michael Mora
Elissa and Malcolm Moran
Betty and Rudy Morin
Lucille Morris
Nancy and E. Paul Mortimer
Betsy Mulcare
Kathi and James Mullins
Lauren Muse
Susan Mutti
Alexandra Nash
Judy Natale
Mia and Tyler Newton
Carolee and Roger Nichols
Elizabeth Nickerson
Anna-Sigga and Matthew Nicolazzi
Katie and Shiro Nogaki
Kay Nordeman
Obi Obi
Jamie O'Connor
Barbara Ohl
Carolyn and Thomas Ohlson
Marcia O'Kane
Cormac O'Malley

On the Mark Catering
Ree and Brian O'Neill
Susi and Kurt Orbanowski
Beverly and Peter Orthwein
Jacqueline Ostrander
Anita and Thomas O'Sullivan
Mairead O'Sullivan
Katharine and Willard Overlock
Pamela Pagnani
Sara and Roger Paige
Lee Paine
Jane and Gary Palmer
Rhoda Pappenheimer
Cathrine and Frank Parker
Michael Parodi
Sally Parris
Joseph Pavia
Kathryn Payne
Sylvester Pecora
Barbara and John Pedwano
Isabella and Michael Perlmutter
Kathleen and John Perry
Judith Petersen
Barbara Petersen Parker
Margaret Phillips
Paula Piekos
Gayle and Kirk Piersol
Meg and Scott Piper
Lindley and John Pless
Elisabeth Porter
Flavia Potenza
Monica Prihoda
Suzanne and John Prunier
PTO of the Japanese School of New York
Paul Pugliese
Frederic Putnam
Cristina Pye
Karen Quirke
Jean Raben
Lauren and David Rabin
Kanta Rajkumar
Maryann Ramos
Genevra Rao
Susan and Bret Rattray
Sharlene Ray
Barbara and James Reibel
Joy Rendahl
Ronna and Francis Reynolds
Allen Richardson
Janice and Gary Riddell
Adriana Riles
Susan and Damian Riordan

Membership & Annual Fund

Joanne Rivers
Paul Robertson
Maureen Rogers
Lori and Joseph Romano
Herbert Roseman
Merry and Rodman Rosenberger
Adele and Frank Rota
Debbie and David Roth
Karen Royce
Marie Rubino
Linda Ruggieri
Elizabeth Ruhland
Joanne Rutar
Monique and Frank Rupp
Christina and Michael Russell
Kathryn Russell
Elise Russi
Sandra and John Ryan
Jean Ryan
Karen Saggese
Sakonnet River Company
Anne and Hugh Sampson
Olga Sanders
Tab and Michael Santanna
Mary Schacter
Audrey and Michael Schaus
Jeannette and G. Peter Schieferdecker
Karen and Raymond Schmitt
Richard Schulze
Urling and Robert Searle
Renee Seblatnigg
Irene and Edward Shaw
Charline and Anthony Shaw
Melinda Sherman
Cynthia and George Sherwin
Amy Sherwood
M. Lavelle Shields
Linda Shirley
Linda Shockley
Martha Shoemaker
Patricia Simone
Donna Sirianni
Elizabeth and Everett Smith
Frank Smurlo
Berrin Snyder
Barbara and Fred Sojka
Katherine Sokoloff
Dina and Robert Solomon
Sandy and Steve Soule
Barbara Spasiano
Catherine Stahl
Giedre Stankunas

Nicola Stanton
Loretta Staufenberg
Janice and Steve Stearns
Linnea Stenberg
Deborah Sterling
Emily and Brian Stern
Kevin Stern
Caralyn and Douglas Stevens
Judy Stewart
Janine St. Germain
Maria and David Stich
Nancy Stillerman
Janet Stone McGuigan
Janet Stroble
Maureen and Stephen Sullivan
Joanne Sullivan
Kathleen and Greg Suss
Barbara Swartz
Lexy Tanner
Leslie and Marcus Tarkington
Anne Teall
Anne Thaxter
The Village Ewe
Jean Thomson
John Toner
Eileen and Paul Toretta
Kristin Toretta
Cindi and Daniel Tredwell
Mary Trent
Kaitlin Triano
Marilyn Tucker-Viselli and Enrico Viselli
Margot and Charles Tusa
Carolyn and Ron Tyson
Betsy Underhill
Frances Unrine
Chetaxl and Sree Vaid
Linda Valentine
Virginia and Kees van Meel
Maria Vasconcelos
Kenley Vinett
Kelly and Jason Vintiadis
Hendric Vogt
Georgia von Schmidt
Pierrette Wagner
Megan and Charlotte Walker
Margie Walker and Trip Reynolds
Lucy and Bob Walsh
Georgia and Craig Walters
Theodore Walworth
Roberta Warburton
Catherine Warburton
Pam Wasserman

Margaret and David Weisbrod
Nancy and Mark Weissler
Jane and Stuart Weitzman
Barbara and Douglas Wells
Robert Weltz
Han Wen
Courtney Wetzel
Susan and Hal Whitman
Susan and John Whitman
Juliann Whitman
Patrice Whittington
Anne Wichman
Ernest Wiegard
Louise and Joseph Williamson
Joseph Williamson
Pauline Willis
Ron Wilson
Sally and Richard Winfield
Dee and Herbert Winokur
Nancy and William Winship
Missy and Scott Wolfe
Ellen and Michael Wolfson
Allison and Steven Wolowitz
Marie and William Woodburn
Nicolle Woodruff
Amanda Wurtz
Joseph Zaffina
Mugs Zales
Barbara Zappavigna
Linda Zeoli
Nancy Ziac
Andrew Zieba



Special Event Donors

David Ogilvy Award Honoring Susie Baker

Cynthia and Ty Anderson
Liz Victory and Scott Anderson
Melinda and Brian Carroll
Holly and Matt Cassin
Susan Cullman
Lisa and Chris Errico
Icy and Scott Frantz
Ellen Funck
Heather and Andrew Georges
Kyu Han and Heinz Maeusli
Mary Ann Henry



Susannah and Jim Heyworth
Sally and Larry Lawrence
Isabel and Peter Malkin
Mimi and John Henry Moulton
Anne and Chuck Niemeth
Natalie Pray, MBE
Debbie and Russ Reynolds

Deborah and Chuck Royce
Shelby and John Saer
Urling and Robert Searle
Valerie Stauffer
Deborah Sterling
Davide and Ron Strackbein



Alease and Paul Tallman
Catherine and David Tompkins
Missy and Scott Wolfe

History in the Making

Honoring the Mitchell Family

Breast Cancer Alliance
JP Morgan Chase & Co.
YWCA of Greenwich
Nancy and Peter Allatt
Kimberly and Neil Augustine
Jenny and Michael Baldock
Anne Barton and Tom Galvin
Veronica and Anson Beard
Elizabeth and Ethan Bing
Emily and Len Blavatnik
Connie and Alan Buerger



Kathleen and Francis Burgweger
Melinda and Brian Carroll
Sandra Caruso
Holly and Matt Cassin
Cynthia Chang and Brian Scanlan
Connie and Tom Clephane
Allison and Timothy Coleman
Rebecca Colin
Carol Crapple
Alexandra and Peter Cumiskey
Mary Jane and Peter DaPuzzo
AnnaMaria DeSalva
Sarah and Adam Dolder
Haley and Joseph Elmlinger
Carrie and Chip Emery
Lisa and Chris Errico
Ramsey Frank
Jeanine and Robert Getz
Connie Anne and Jeremiah Harris
Claire and Carlos Hernandez
Susannah and Jim Heyworth

Debra and Carl Mecky
Scott Mitchell
Elena and Jonathan Moffly
Mallory and Greg Molenkamp
Mimi and John Henry Moulton
Anne and Chuck Niemeth
Indra and Raj Nooyi
Mairead O'Sullivan
Lindsay and David Ormsby
Lolly Prince
Mary Quick
Debbie and Russ Reynolds
Leigh Ann and Robert Ryan
Shelby and John Saer
Heather and John Sargent
Jennifer and Michael Shannon
Dorothy Stapleton



Wendy Stapleton
Davidde and Ron Strackbein
Alease and Paul Tallman
Catherine and David Tompkins
Lauren Walsh
Susan Weiss
Dave Williams



Lori and Marc Kasowitz
Alexandra and Cody Kittle
Sally and Larry Lawrence
Cynthia Leaman
Bunny Lukas
Evan Kingsley
Isabel and Peter Malkin
Vilma and Dick Matteis
Linda and Vincent McMahon

Spring Fete

Featuring Aerin Lauder

Backcountry Mercantile
Briony Raymond
Elite PBS Events
Nicole Caroline Skin
Plan A Advisors
Roughan Interiors
TriPost Capital Partners
VanderHorn Architects

Liz Victory and Scott Anderson
Rebecca and Darren Anikstein
Lily and Whit Armstrong
Sallie Baldwin
Eileen Bartels
Anne Barton and Tom Galvin

Courtenay Benedict Carella
 Amy Berkery
 Courtney and Laird Bieger
 Elizabeth and Ethan Bing
 Nina and Jay Bliley
 Scottie Bonadio
 Francesca Bonaiuto
 Brooke Boothe
 Anne Louise and Matt Bostock
 Jacki and Brendan Brew
 Alisa and Curtis Brockelman
 Marisa and Matt Brown
 Anne Buford
 Julie and John Burke
 Tiffany and Don Burnette
 Mary Burr
 Jennifer and Theron Burraway
 Melinda and Brian Carroll
 Morgan Caspi

Meredith and Brian Feurtado
 Ali Galgano
 Amanda and Alexandre Gaudalet
 Martha Gendell
 Cosby George
 Heather and Andrew Georges
 Jane Gering
 Carolyn Gilbert
 Alicia Gould
 Jessica Gruss
 Meredith Hanson
 Ren and Spencer Harman
 Christine and Douglas Harmon
 Hilary and Andre Haroche
 Briana and Gregory Hart
 Melissa and Carney Hawks
 Lisa and Mark Heissan
 Carol and James Henderson
 Susannah and Jim Heyworth

Mary Jane and Rob McCormack
 Debra and Carl Mecky
 Sara and Brian Mendell
 Mimi and John Henry Moulton
 Jess Murphy
 Kay Nordeman
 Robin O'Neil
 Jessica Occi
 Katerina Pergola
 Meg and Scott Piper
 Joanna Pisani
 Lindley and John Pless
 Sally Potak
 Candace and Chris Procaccini
 Bryn Redman
 Alexandra Robertson
 Deb and Perry Robinson
 Sarah Robinson
 Maureen Rogers
 Nicki and Charles Rose

Leigh Ann and Robert Ryan
 Shelby and John Saer
 Heather and John Sargent
 Chelsea and Derek Schaeffer
 Audrey and Michael Schaus
 Cathy Schulz
 Lauren Schwartz
 Christina and Dan Seale
 Meredith and Darren Shanes
 Erica and Todd Silverman
 Dorothy Stapleton
 Wendy Stapleton
 Valerie Stauffer

Natalie and Eric Stein
 Stacey Steinmetz
 Emily and Brian Stern
 Margaret Stevens
 Davidde and Ron Strackbein
 Robert Sweet
 Susan and Brett Tejpaal
 Lee Ann and Thomas Thornton
 Catherine and David Tompkins
 Victoria and Mike Triplett
 Maria Vasconcelos
 Kelly and Jason Vintiadis
 Lisa Weinberg
 Caroline White
 Sally and Richard Winfield
 Amanda Wurtz
 Susan and Clifford Yonce
 Tracy and William Yort
 Linda Zeoli
 Aerin Zinterhofer



Holly and Matt Cassin
 Cynthia Chang and Brian Scanlan
 Betsy and Michael Cherkasky
 Sarah Chesters
 Kate and Jim Clark
 Margo and Clayton Cole
 Judy and Chris Collins
 Hillary and Parker Corbin
 Lauren and Chris Corrinet
 Jill and John Coyle
 Dominique Crosby
 Alexandra and Peter Cumiskey
 Nancy Cuniffe
 Mary Jane and Peter DaPuzzo
 Rachel Doneger
 Kristina Downey
 Lauren and Richard duPont
 Katelyn and Brendan Dyson
 Julia Ecclesine
 Lauren Evans
 Killeen and Joseph Faughnan
 Shirin and Frederic Fekai

Sophie and William Hood
 Patricia and Forbes Hopper
 Colette and Gary Howe
 Erin Jensen
 Katie and Peter Juhas
 Townsend Katz
 Jackie Keber
 Alyssa and Tom Keleshian
 Kristin and Michael Kelly
 Katie Killean
 Joni and Kevin Kimberlin
 Evan Kingsley
 Samantha Knapp
 Jo Carole and Ronald Lauder
 Sally and Larry Lawrence
 Alison Levinson
 Alicia Leyrer
 Bunny Lukas
 Patricia Lunka and Gary Berkman
 Lauren Luskey
 Joey Magliocco
 Schuyler and Patrick McBrien

Gifts in Honor & Gifts in Memory

Garden Club of Old Greenwich in honor of our members past and present, celebrating the centennial anniversary of the founding of the club on 10/12/24

Greenwich Country Day School in honor of the Haroche Family

Mary Addington Smith in honor of John Addington, the First Postmaster of Greenwich

Elizabeth and Robert Alexander in honor of Alexandra Cummiskey

Sue Baker in memory of Sandra Herman

Jenny and Michael Baldock in honor of the Mitchell Family

Jane and Kenneth Bartels in honor of Isabel and Peter Malkin

Susan Bevan in honor of Alease Fisher Tallman and Paul Tallman

Kathleen and Francis Burgweger in honor of Anne and Chuck Niemeth

Bonnie Caie in memory of Catherine and James MacKay

Laura Casale in honor of Morgan and John Maisano

AnnaMarie DeSalva in honor of Scott Mitchell

Ruth Duncan in memory of Isaac Ferris, founding member

Yuko Dunham in memory of Noboru Uezumi

Cheryl and Daniel Dunson in honor of Christopher Shields

Stella Economou in honor of Lynn Murray

Haley and Joseph Elmlinger in honor of Isabel and Peter Malkin

Haley and Joseph Elmlinger in honor of Debra Mecky

Cohl Ferris Katz in honor of Jeffrey Ferris

Jane and Antreas Ghazarossian in honor of Debbie and Russ Reynolds

John Bolling Hall in honor of Raynal Cawthorne Bolling

Gale and Thomas Hartch in memory of Gerald Anderson

Elizabeth and Jordan Haviland in honor of the love and dedication of Mrs. Peter Malkin to the Greenwich Historical Society

Barbara and Joseph Havranek in memory of Lt. Col. Richard J. Havranek, United States Air Force

Evelyn Iversen in memory of Nola Taylor

Lori and Marc Kasowitz in honor of Scott Mitchell and the Mitchell Family

Nancy and John Kavanagh in memory of Richard Johann

Easy Kelsey in honor of David Brownwood

Carol Kenyon in memory of Dennis Smith

Sarah Kreitman in honor of Alma and John Currykosky

Kate and Albert Laverge in honor of Susan Larkin

Isabel and Peter Malkin in honor of Scott Mitchell and the Mitchell Family

Sally Maloney in honor of Christopher Shields

Joan and Richard Margenot in memory of Mary Margenot

Joan and Richard Margenot in honor of the Palache Family

Ainsley McAleer thanks to Catherine Tompkins for introducing us to this special place!

Josie Merck in honor of Susan Larkin

Alison Mieloch in honor of the Robins Family

Ellen and Rick Moman in memory of Billy Foster

Rosalie Monahan in memory of Dean R. Monahan

Lucille Morris in memory of Jack Morris

John Nelson in honor of Susie Baker

Anita and Thomas O'Sullivan in memory of Jack Morris

Mairead O'Sullivan in honor of the Mitchell Family

Sally Parris in honor of Davidde Strackbein

Suzanne and Andrew Peisch in honor of Daniel Suozzo

Gayle and Kirk Piersol in honor of Brian Andreoli, Esq.

Mary Quick in honor of Scott Mitchell

Lucy and Larry Ricciardi in honor of Davidde and Ron Strackbein

Jane and Paul Shang in honor of Cynthia Chang

Donna Sirianni in honor of the Downey Family

Kevin Stern in honor of Jeanie L. Stern

Nancy Stillerman in honor of Bea Crumbine

Joanne Sullivan in honor of Joseph Edward Sullivan III

Alease and Paul Tallman in honor of Jeanine and Robert Getz

Susan Weis in honor of the Breast Cancer Alliance and Scott Mitchell

Mugs Zales in honor of Isabel and Peter Malkin

Andrew Ziebe in honor of the Gordon Buchsbaum Family

In-Kind Donations

203 Ride with Pride
Abigail Fox Designs
Abilis Garden and Gifts
Applausi Osteria Toscana
Athena Books
Albano Turnera
Bauble Stockings
BD Provisions
Bistro V
Bruce Museum
Burkewood Road
Catch All
Chasseur de Mode Et Maison
Christy and Douglas von Oiste
Clay Art Center
Dear Annabelle
Delta Kappa Gamma – Alpha Chapter
Designing Women
Designs by Lee
Duggan Society
Elite PBS Events
Elizabeth Lake
Event Design Studio
Fahey Fine Jewelry
Fjord Fish Market
Funky Monkey
G. McGee LLC
Garden Catering
Garden Club of Old Greenwich
Gas Bijoux
Gingerbitz Coffee
Green Fingers Garden Club
Greenwich Audubon Center
Greenwich Blooms
Greenwich Cheese Company
Greenwich Garden Club
Greenwich Symphony Orchestra
Harrison Wine Vault
Higgins Group Greenwich
Hortulus Inc.
Il Pastaficio
J House
Jacqueline and John Considine
Japan Society of Fairfield County, Inc.
Jean Forte Vintage Gifts
Julia Pandolfo
Kallos Medical Aesthetics
Kaori Higgins
Knollwood Garden Club
Karen McKenna
Linda Cesiro
Meli Melo



Michino Paris
Moffly Media
Needle Golf
Open Arts Alliance
Pamela Munson
Pollogeorgis Fur Fashions
Reindeer Festival
Riverside Garden Club
Rummage Room/The First Congregational Church
Salon 221
Sam Bridge Nursery
Siren Restobar
Smart Kids Toys
Sophia's
Sotheby's International Realty
Stanton House Inn
Stanton Sweets
Suburban Chaos
Summer Rain
The Copper Shed
The Greenwich Exchange Gift Shop
The New York Historical Society
Town of Greenwich Youth Services Bureau
Trish O'Sullivan Floral Design
Upper Crust Bagel Company
Vegetable Sweater New York
Waterstone at High Ridge
Waterstone of Westchester
Waterstone/Epoch Senior Living
YWCA of Greenwich

Thanks to all who generously contributed to our 2024-25 fiscal year. We apologize for any errors or omissions. Please contact Naomi Long, Development Associate, with any questions or comments at nlong@greenwichhistory.org, 203.869.6899 x24.

Board & Staff



Board

Officers

Alexandra Dalpan Cummiskey
Co-Chair

Catherine Tompkins
Co-Chair

Tom Galvin
Vice Chair

Anne Ogilvy
Vice Chair

Heinz Maeusli
Treasurer

Susannah Heyworth
Secretary

Trustees

Melinda Carroll

Holly Cassin

Cynthia Chang

Thomas P. Clephane

Bea Crumbine

B. Cort Delany

Haley Elmlinger

Lisa Errico

Miguel Garcia-Colon

Heather Georges

Robert H. Getz

Connie Anne Harris

Alexandra Kittle

Michael A. Kovner

Sally Lawrence

Susan Reynolds Lehman

Isabel Malkin

Patrick Mele

Mallory Molenkamp

Mimi Moulton

Charles Niemeth

Debbie Reynolds

Deborah Schmidt Robinson

Leigh Ann Ryan

Shelby Saer

John Sargent

Erica Maher Silverman

Davidde E. Strackbein

Alease Fisher Tallman

Honorary Trustees

Susan G. Larkin (2012)

Peter Malkin (2018)

Deborah Royce (2022)

Meriwether Schmid (2020)

Hugh B. Vanderbilt Jr. (2022)

Staff

Carol Cadou

Executive Director and CEO

Lauren Ackerley

Assistant Director for Education

John Bridge

Research Assistant

Kathy Craughwell-Varda

Senior Curator

Kylie Higgins

Museum Store Associate

Melissa Houston

Director of Education

Barbara Johann

Museum Store Manager

Laura Kelly

Manager of Development & Membership

Gail Luciano

Bookkeeper

Olivia Luntz

Manager of Education & Outreach

Dianne Niklaus

Director of Marketing & Communications

Christopher Shields

Director of Library & Archives

Kathy Stefanatos

Visitor Services Coordinator

Daniel Suozzo

Director of Special Events

Alexis Zuniga

Manager of Marketing & Communications

Docents

Anne Alexander

Nancy Barker

Kathleen Jarombek

Annabelle Kavounas

Ellery Leary

Kate Loh

Jeannine Madoff

Susan Maher

Lynn Murray

*With appreciation to our outgoing 2024-25 Trustees:
Lauren duPont, Chip Emery and Heather Sargent.*

Board Committees

Audit Committee

Cort Delany, *Chair*
Chuck Niemeth
Leigh Ann Ryan

Preservation and Landscape Committee

Melinda Carroll, *Chair*
Bea Crumbine
Lisa Errico
Heather Georges
Jeanine Getz
Patrick Mele
Shelby Saer
Alease Fisher Tallman

Collections Committee

Sally Lawrence, *Chair*
Lily DeJongh Downing
Tom Galvin
Mary Ellen LeBien
Isabel Malkin
Josie Merck
Ross Ogden
Barbara Ormerod-Glynn
Debbie Reynolds
Davidde Strackbein

Development Committee

Holly Cassin, *Co-Chair*
Robert Getz, *Co-Chair*
Tom Clephane
Tom Galvin
Connie Anne Harris
Susannah Heyworth
Peter Malkin
Mallory Molenkamp
Mimi Moulton
Anne Ogilvy
Deb Robinson
Leigh Ann Ryan
Erica Maher Silverman
Catherine Tompkins

Finance Committee

Heinz Maeusli, *Chair*
Alexandra Cummiskey
Haley Elmlinger
Tom Galvin
Robert Getz
Leigh Ann Ryan
John Sargent

Governance Committee

Cort Delany, *Co-Chair*
Leigh Ann Ryan, *Co-Chair*
Holly Cassin
Tom Clephane
Haley Elmlinger
Robert Getz
Anne Ogilvy
Alease Fisher Tallman

Marketing and Communications Committee

Connie Anne Harris, *Co-Chair*
Mallory Molenkamp, *Co-Chair*
Alexandra Kittle
Patrick Mele

Leadership Committees

History in the Making 2024 Honoring The Mitchell Family

Chip Emery, *Co-Chair*
Connie Anne Harris, *Co-Chair*
Mallory Molenkamp, *Co-Chair*

History in the Making 2025 Honoring Debra L. Mecky

Isabel and Peter Malkin, *Co-Chair*
Mallory and Greg Molenkamp, *Co-Chair*
Debbie and Russ Reynolds, *Co-Chair*

Spring Designer Lecture

Lisa Errico, *Co-Chair*
Erica Silverman, *Co-Chair*
Lauren duPont, *Board Liaison*
Susannah Heyworth, *Board Liaison*
Catherine Tompkins, *Board Liaison*

Greenwich Landmarks and David Ogilvy Preservation Award

Heather Sargent, *Co-Chair Greenwich Landmarks*
Heather Georges, *Co-Chair Greenwich Landmarks*
Anne Ogilvy, *Co-Chair David Ogilvy Preservation Award*
Robert Getz, *Co-Chair David Ogilvy Preservation Award*

Greenwich Historic Trust

Heather Georges, *Co-Chair*
Robert Getz, *Co-Chair*
Anne Ogilvy, *Co-Chair*
Deb Robinson, *Co-Chair*

Professional Advisory Council

Cort Delany, Cummings and Lockwood, *Co-Chair*
Deborah Schmidt Robinson, Art Market Advisors, *Co-Chair*
John Bennett, Northern Trust Company
Victoria Bolton, JP Morgan Chase
Michael Clear, Wiggin & Dana
Robert DeVellis, Blair & Potts
Charles Dowling Sullivan & Cromwell
Thomas Healy, Bessemer Trust
Jevera Kay Hennessey, Wiggin & Dana

Paulina Mejia, Fiduciary Trust Company
Stephen Napier, Berkowitz Trager & Trager
Douglas Olin, Cummings & Lockwood
Lisa Goodrich Page, Dungey Dougherty
Charles Pieterse, Cummings & Lockwood
Jennifer Port, Ivey Barnum & O'Mara
Lori Romano, Cummings & Lockwood
Kenley Stark, Withers Worldwide
Amy Wilfert, Day Pitney

Greenwich Preservation Network

Diane Fox, *Chair*
Stephen Bishop, Historic District Commission Chair
Nancy Dickinson, Conservation Commission
Chuck Hilton, Charles Hilton Architects
Elise Green, Historic Properties of Greenwich
Will Kies, Greenwich Land Trust
Kate Dzikiewicz, Greenwich Tree Conservancy
Paul Pugliese, Greenwich Preservation Trust
Russ Reynolds, Jr., Historic Properties of Greenwich
Renee Seblatnigg
Fifi Sheridan, Historic District Commission



Volunteers



Green Team

Florence Boogaerts
Virginia Cheney
Jonathan Glass
Greenwich Garden Club
Jason Grippo
Yuka Kominami
Carmen Konigsbach
Samira Loschiavo

Susan Norton
Elise Russi
Pat Simone
Catherine Stahl
Winnie Staniford
Ron Wilson



Public Programs

Mason Avery
Bruce Barker
Jackie Cabrera
Josh Fleischmann
Eli Houston
Micah Houston
Silas Houston
Zach Houston

Jon Long
Brian Luntz
David Luntz
Kristin Luntz
Michael Miller
Donna Simons



Marketing & Communications

Ivy Hillman
Emma McCartan
Amalia Neff
Caleigh Peloso





Greenwich Historical Society
preserves and interprets
Greenwich history to strengthen
the community's connection to
our past, to each other and to
our future.



Become a member, renew
or donate today!
Thank you for your support.